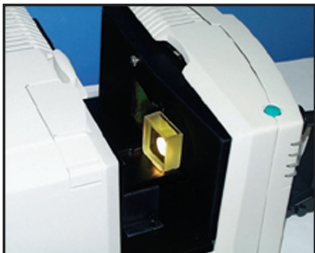


Accessories



ColorQuest[®] XT



C02-1005-481

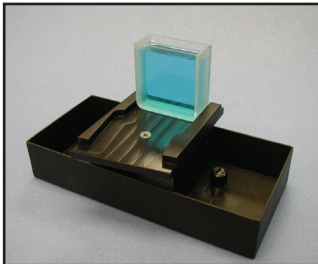
Transmission Cell Holder

Permits transmittance measurement of liquids in Transmission cell.

13-8573-20 (50mm)
B04-1003-801 (33mm)
04-4592-00 (20mm)
13-8573-40 (10mm)

Transmission Cells

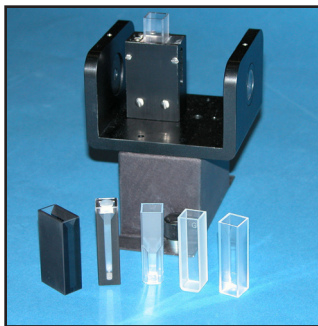
Optically clear glass cell with fixed path length of 50mm, 33mm, 20mm or 10mm. For use with Transmission Spill Tray and Cell holder. Available with screw tops on special order.



D02-1011-568

Transmission Spill Tray and Cell Holder

Permits transmittance measurement of liquids using rectangular transmission cell (above). Cells purchased separately.



L02-1012-202

Semi-Micro Cell Holder and Optical Assembly

Enables the use of 10mm and 20mm path length standard or semi-micro analytical cells for color transmission measurement of small volumes of clear liquids. Glass or plastic cells are purchased separately by the customer. Approximate sample volumes required when using semi-micro cells are 0.4ml for 10mm path length and 0.8ml for 20mm path length.

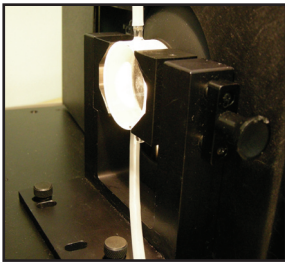
The thick walled cells (having 4mm internal width) are available from NSG Precision Cells, Inc. and Starna Cells. Disposable cuvettes with 4mm internal width are available from Fisher Scientific.



C02-1005-444

Transmission Clamp

Holds transparent film, glass or plastic in position for total or regular transmission measurements.



D02-1009-960

Flow-Through Cell Holder

Provides a cell holder that can be mounted in the transmission compartment for supporting a flow cell.

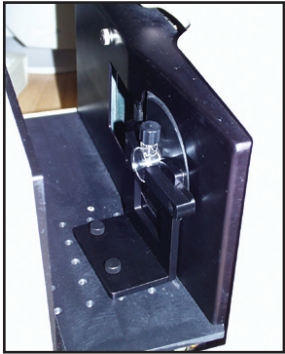
C04-1001-960 (50mm)

Flow-Through Cell

C04-1001-959 (20mm)

C04-1001-958 (10mm)

Provides a 2 inch (51mm) diameter optically clear flow-through glass cell with a path length of 50mm, 20mm, or 10mm.



CMR 2220

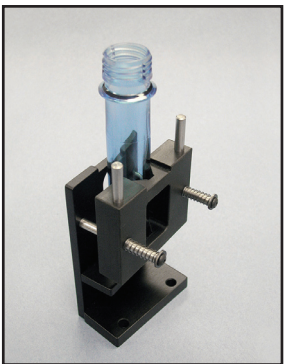
Holder of Round, Capped Cell

Provides a cell holder that is mounted in the transmission compartment for supporting the round, capped cell (below). Cell purchased separately.

A13-1011-613

Round, Capped Cell

A round, screw capped, optically clear transmission cell with 10mm path length and 4.0ml volume. Cell includes both a solid propylene cap and inject-a-cell cap. For use with above Holder for Round Capped Cell.



D02-1011-833

Transmission Preform Holder

Measures preforms with shaft diameter from 10mm to 40mm. The length of that straight shaft above the preform threads should be at least 50mm in order to completely cover the port.



L01-1010-678 (110V)

External Printer Kit, 110V

Includes one spare ribbon, one spare roll paper and cable

L01-1010-679 (220V)

External Printer Kit, 220V

Includes one spare ribbon, one spare roll paper and cable



D02-1010-327

Footswitch Assembly

The footswitch is used to initiate sample measurement without the use of hands.

B04-1002-672

Tall Transmission Cells

20mm pathlength x 40mm wide x 200mm high.

For more information, please contact HunterLab at 703-471-6870, sales@hunterlab.com or visit www.hunterlab.com