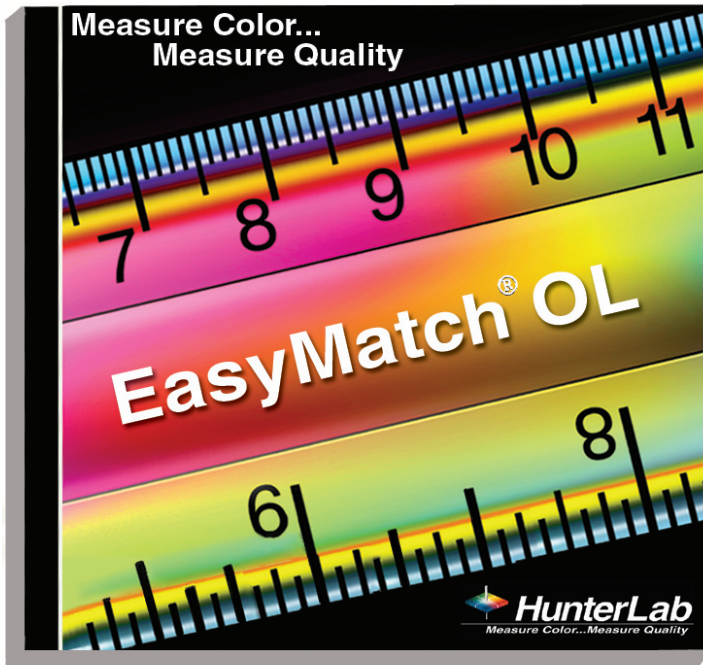


# Presenting... Presenting...



## EasyMatch® OL

On-Line Color Measurement Software



- ◆ Networking server/client capability
- ◆ Seven configurable data views
- ◆ Job files for easily cataloging, retrieving and e-mailing data
- ◆ User manager with customized access privileges
- ◆ Access® or SQL® database storage for easy querying of data
- ◆ Built-in Statistical Process Control features
- ◆ Languages include Chinese, English, French, German, Italian, Japanese and Spanish

Real-time software for continuous on-line color measurement. The networking capability of EasyMatch® OL Software allows you to operate up to four HunterLab on-line spectrophotometer sensors using one server computer and to use multiple client computers to talk to the sensors through the server. All target standards, measurements, setup parameters and data views that are required for a run or product can be stored in a single job file. Multiple jobs may be in use at the same time, if desired. User configured screens can be stored as a template and later recalled for easy creation of new jobs. EasyMatch OL provides unprecedented flexibility to collect, display and analyze color data from your HunterLab on-line spectrophotometer. Yet it is easy to use and can be configured to show only the information you want. It offers virtually limitless possibilities for presenting and

comparing your color information. Color data and spectral data are displayed numerically in spreadsheet form or graphically as color plots, spectral plots, trend plots and control charts. In addition, various process events and alarm conditions for a job are recorded and are reported in summary tables or graphs. Data from other process variables can be automatically imported and then displayed and saved along with color data. Further, run notations and memo fields allow users to enter events which happen during a run that may affect shade, such as range stops. These can then be stored and displayed along with the corresponding color data. All of this information can be incorporated into printed reports which can be generated by the system automatically at the end of a run or requested manually at any time.



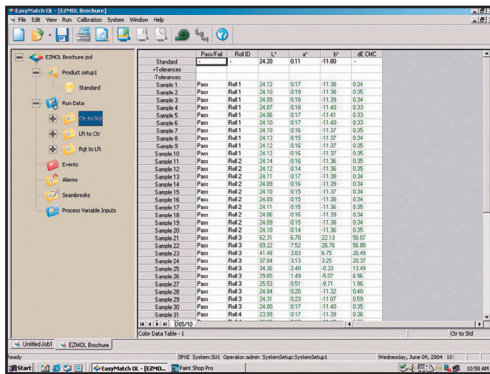
ISO 9001:2000 Certified

Hunter Associates Laboratory Inc., 11491 Sunset Hills Road, Reston, VA 20190-5280  
Tel 703-471-6870 Fax 703-471-4237 sales@hunterlab.com • www.hunterlab.com

# EasyMatch<sup>®</sup> OL

## Customize to Fit Your Needs

EasyMatch OL has seven report views: Color Data Table, Trend Plot, Control Chart, Statistics, Color Plot, Spectral Data Table, and Spectral Plot. You can display as many or as few as you need and configure them any way you wish. Screen layouts can be saved as templates so that you can use them to easily create future jobs. You can even choose to view or hide the Job Tree, Toolbar and Status Bar.

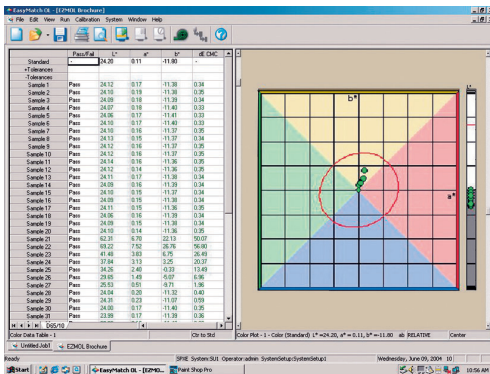
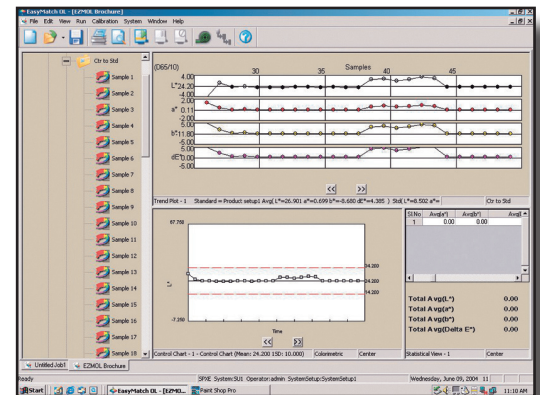


### Job Tree and Color Data Table

Job folders can be created for various customers, products or machines. Jobs stored within the folders can be for individual or multiple standards and run measurements can be associated with specific standards. Event, Alarm and Seam Break summary data reports can also be selected from the job tree. The Color Data Table displays colorimetric data for the standard and measurements as well as tolerances. A selection of numerous color scales, color differences, illuminant/observers and indices are available.

### Trend Plot, Control Chart and Statistics

Color trends of your measurements can be plotted in real time to enable you to identify color variations and prevent out of tolerance conditions. Historical data can be recalled and plotted to view process variations. The Control Chart view tracks any run parameters or those from other process field devices, such as dE\* from the sensor or a box temperature from the range. Sigma limits, as well as centerlines, can be manually entered or automatically calculated by the software. The Statistics view allows you to view average and standard deviation data for each run of product or an entire run.

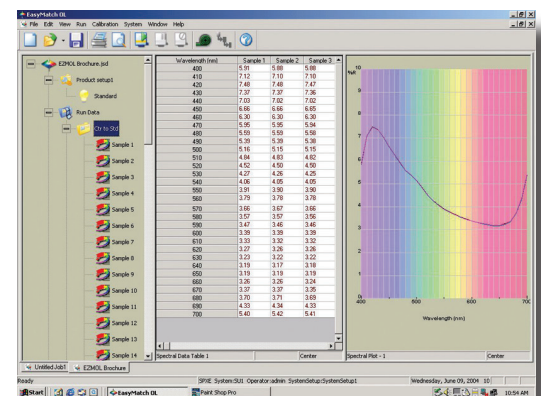


### Color Plot

The Color Plot visually shows the measurement location in color space with respect to the standard as well as the rectangular or elliptical tolerances.

### Spectral Data and Spectral Plot

Spectral Data and Spectral Plots of a standard and an unlimited number of measurements can be displayed and plotted. Data can be displayed in column or row form and spectral plots can be automatically scaled or set by the user.



For more information, please contact HunterLab at 703-471-6870, [sales@hunterlab.com](mailto:sales@hunterlab.com) or visit [www.hunterlab.com](http://www.hunterlab.com)

EasyMatch is a Trademark of Hunter Associates Laboratory, Inc. Access and SQL are Trademarks of Microsoft Corporation  
Specifications subject to change without notice