

Accessories



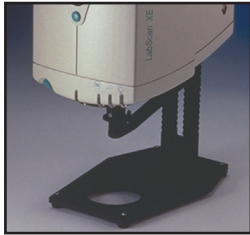
LabScan® XE



D02-1009-200

Sample Clamp

Holds samples securely at the sample port for measuring with the instrument in the port forward orientation. Includes interchangeable white and black backing plate.



D02-1009-350

Port-Down Stand

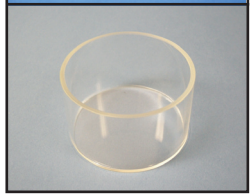
Permits port-down mounting of the sensor. Includes an adjustable arm assembly with clamp.



A02-1010-316

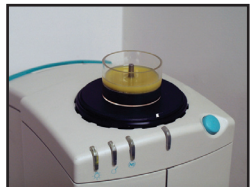
Port Insert For Glass Sample Cup

The use of the sample cup enables the measurement of powders, granules, pellets, pastes and liquids. The port insert is designed to hold the sample cup in proper position at the measuring port.



04-7209-00

Glass Sample Cup, 64mm (2.5 inch) diameter



LSXE-SC-ASSY

Sample Cup Set for Translucent Liquids

This set permits the measurement of transparent or translucent liquids and semi-solids. The ring and ceramic disk are used to fix the path length for transreflectance measurement.

Includes a Port Insert for Glass Sample Cup, a Glass Sample Cup, Ring and Disk Set, and Sample Cup Opaque Cover.



A02-1010-316

04-7209-00

02-4579-00

04-4000-00

Port Insert for Glass Sample Cup

Glass Sample Cup, 64mm (2.5 inch)

Ring and Disk Set

Sample Cup Opaque Cover



HunterLab
Measure Color...Measure Quality

ISO 9001:2000 Certified

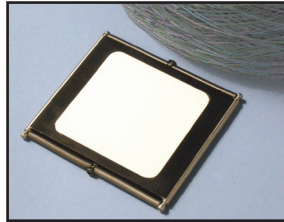
Hunter Associates Laboratory Inc., 11491 Sunset Hills Road, Reston, VA 20190-5280
Tel 703-471-6870 Fax 703-471-4237 sales@hunterlab.com • www.hunterlab.com



LSXE-COMP

Compression Cell Set

Used to compress fibers into a compact mass to permit repeatable color analysis. Includes a pneumatically driven compression assembly, port insert cup holder and a 64mm (2.5 inch) glass sample cup.



02-7396-00

Skein Holder

Used for measuring yarns and string skeins.

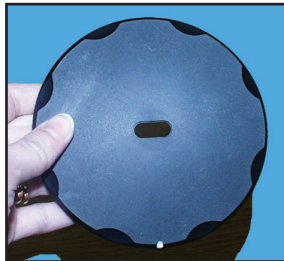


A02-1010-320
A02-1010-319
A02-1010-318
A02-1010-317

Port Inserts with glass

Protects the instrument from sample and airborne particles.

- Port Insert, 44mm (1.75 inch) with glass**
- Port Insert, 25mm (1.00 inch) with glass**
- Port Insert, 13mm (0.50 inch) with glass**
- Port Insert, 6mm (0.25 inch) with glass**



A02-1013-325 (19mm x 6mm)
CMR-2713 (17.8mm x 7.6mm)

Capsule Shaped Port Insert

For the reflectance measurement of capsules using the LabScan XE. The LabScan XE must include the Variable Sample Illumination (VSI) option.



CMR-2439

Semi-Micro Powder Holder

Permits the reflected color measurement of as little as 0.4cc of packed powder. Powder is placed in the powder holder and is backed with the white plunger. LabScan XE must include the Variable Sample Illumination (VSI) option.



D02-1010-327

Footswitch Assembly

The footswitch is used to initiate sample measurement without the use of hands.

For more information, please contact HunterLab at 703-471-6870, sales@hunterlab.com or visit www.hunterlab.com

LabScan XE is a Trademark of Hunter Associates Laboratory, Inc.