

Presenting...
Presenting...



ColorQuest® OL

On-Line Transmission Color Measurement



- ◆ On-line transmission color measurement of sheet and film
- ◆ Precision and sensitivity at an economical price
- ◆ Can be connected to a PC, network, or PLC
- ◆ Easy-to-Read, LCD touch screen simplifies operation
- ◆ Continuous real-time measurement
- ◆ Software easily customized for specific applications
- ◆ Robust design for plant environments
- ◆ Available with EasyMatch® On-Line software for PC

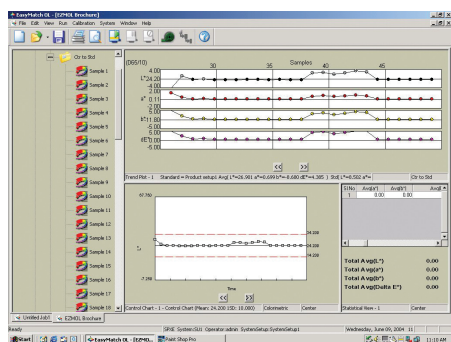
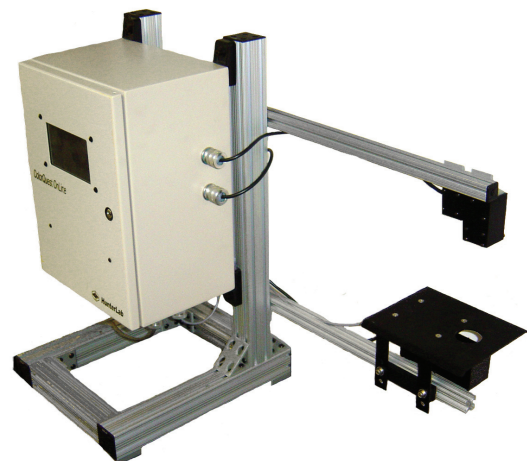
ColorQuest[®] OL

On-Line Transmission Color Measurement System

The ColorQuest OL is a non-contact spectrophotometer designed for the on-line measurement of transmitted color. It is ideal for the continuous measurement of transparent films and sheet.

System Description

The ColorQuest OL is comprised of a signal conditioning unit, source sensor head, and receiver sensor head mounted on a support structure. Fiber optic bundles are used to transport the illuminating and detected energy to and from the measurement area. The standard system has a built-in touch screen display mounted in the conditioning unit. Prompts appearing on the display are simply touched with a finger to initiate dedicated product set-up and measurement



applets. This allows the operator to use the system without the need for a PC. Data can be output in analog or digital form for plant wide networking. For installations where the unit is not easily accessible a remote touch screen is available and if desired, using EasyMatch[®] On-Line software, the system can also be used with a PC.

EasyMatch[®] Transmission On-Line Software



System Features and Specifications

- **Optical System:** Dual Beam Spectrophotometer with collimated light source
- **Spectral Range:** 400-700nm
- **Wavelength Interval:** 10nm
- **Effective Bandwidth:** 10nm equivalent triangular
- **Light Source:** Pulsed xenon lamp
- **Lamp Life:** >1 million flashes
- **Illuminant/Observer:** D65/10°, C/2°
- **Indices:** ASTM E 313 Yellowness, Y Transmission
- **Illuminated/viewed area:** 35mm/25mm (1.38" x 1.00")
- **Measurement interval:** < 5 seconds
- **Power input:** 100-240VAC, 47-63HZ
- **Receiver to transmitter distance:** 5.1cm- 25.4cm (2"-10")
- **Enclosure:** NEMA 4x enclosure provides protection from corrosion, dust and water

Optional Features

- Analog Outputs
- Remote Display
- Configurable digital inputs (4)
- Configurable digital outputs (4)

For more information, please contact HunterLab at 703-471-6870, sales@hunterlab.com or visit www.hunterlab.com

ColorQuest is a Trademark of Hunter Associates Laboratory, Inc.

Specifications subject to change without notice