

EasyMatch[®]

For Paint and Opaque Coatings

Color Formulation And Control Made Simple

EasyMatch - Quick, easy color formulation. This revolutionary software lets novice and expert alike effortlessly formulate new colors, reformulate existing colors, make batch corrections, and work off waste. You'll notice the difference from the moment you see EasyMatch. It looks as easy to use as it is. Point and click simplicity combined with innovative use of WINDOWS[®] makes working with EasyMatch fun.

EasyMatch will save you money too. You'll cut costs by reducing color matching and batch correction time, lowering formula costs, reducing colorant inventory, and working off waste.

This color formulation system is also a powerful quality control tool, for tasks like strength determination of raw materials and pass/fail inspection of final product.

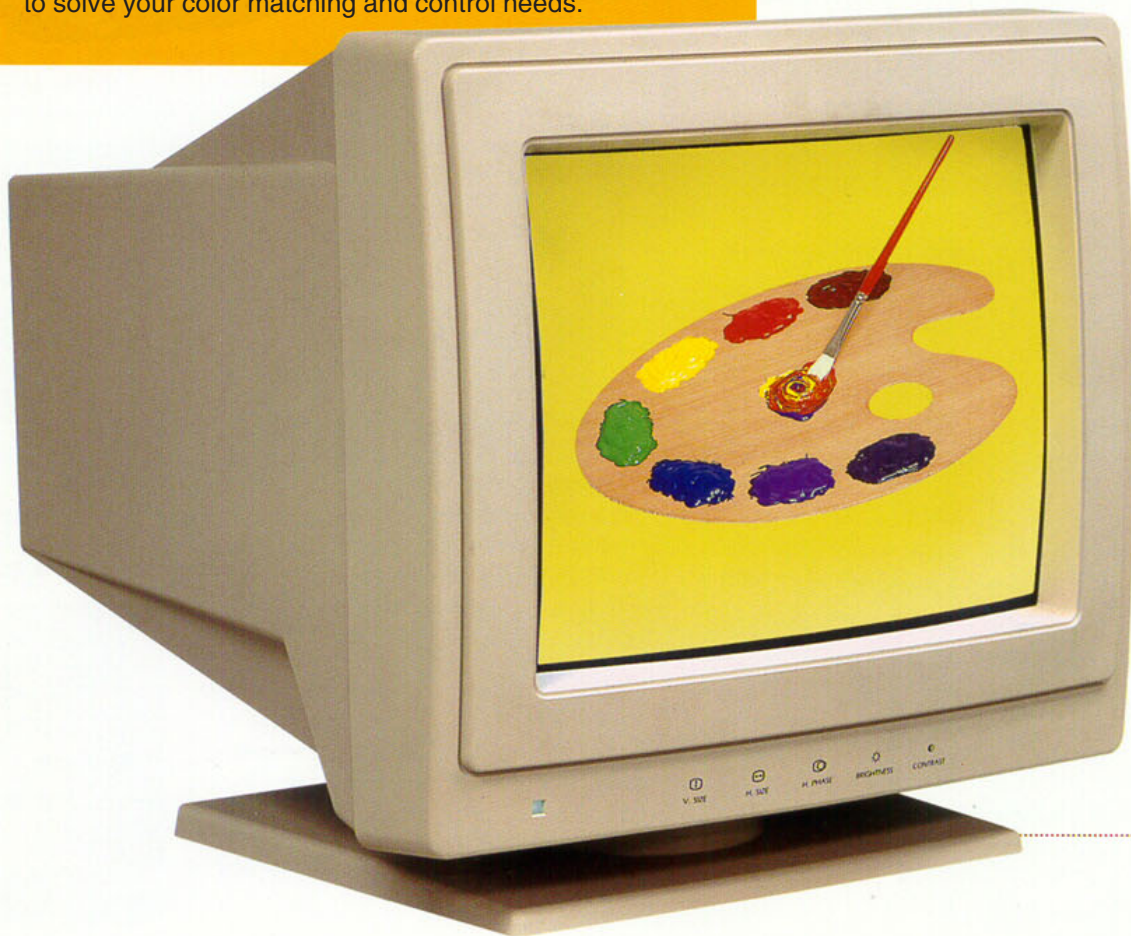
EasyMatch is compatible with HunterLab's family of spectrophotometers. Put its versatility and capability to work to solve your color matching and control needs.

Fast

Easy

Cost

Effective



Two Approaches - Both are Easy

There are two basic ways to complete color formulation. EasyMatch selects the colorants or you do.

For fully automatic color formulation let EasyMatch do all the work. Read the standard to be matched and select the EasyMatch function. EasyMatch will automatically select the colorants for a match, predict the amount of each colorant to use and determine the cost. Formulas will be listed in order of best match or cost. Color formulation can be that easy.

When you prefer manual color formulation - select the colorants. The Match function predicts the best combinations and amount of each colorant to use.

Minimal Training Needed

EasyMatch virtually eliminates the need for extensive training. This system enables you to easily step through the formulation process. Bring EasyMatch up on screen and your color formulation confidence level jumps 100%. EasyMatch uses the WINDOWS® operating environment. Pull down menus, icons and the point and click simplicity of a mouse make color formulation more fun than work.

Colorants are displayed as paint can icons and target colors can be simulated on the screen. Each icon has a name or number that you have assigned for instant identification. This efficient identification system makes finding colorants simple. Also, the colorants used for a formula are selected directly from the screen to eliminate possible errors.

Simple Yet Sophisticated

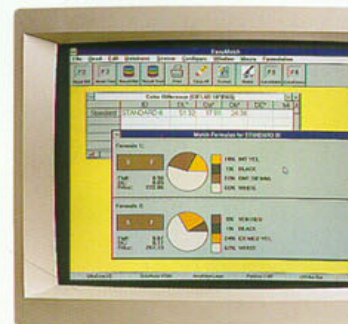
EasyMatch is simple to use yet it delivers exceptional performance for basic through complex color formulation tasks. This unique software allows you to minimize the time needed to formulate new colors or rework existing colors. With the search function you can find previously produced formulas that provide a close match to the standard. The correction function can then adjust your formula.

EasyMatch also has a "what if" capability so you can experiment with match results. The "what if" function lets you specify different colorants and their amounts, manually adjust a formula to see what impact each formula variable has on the final results. Formula, colorimetric data and plot, plus on-screen color simulation and spectral plots are simultaneously updated and displayed to make EasyMatch a great learning tool.

You'll also appreciate that EasyMatch has the full QC capability of HunterLab's innovative EasyMatch software.

EasyMatch ▼

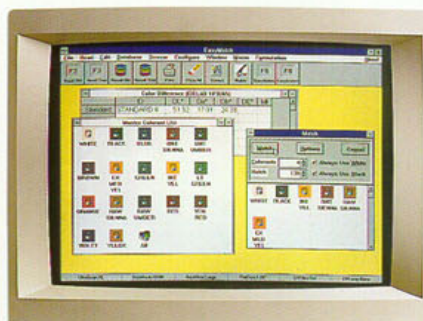
The computer will automatically determine suitable combinations of pigments to match a standard.



Formula List ▲

Predicted formulas are listed in order of closest match, best overall match (closest and least metameric) or lowest cost match.

The Smart, Easy

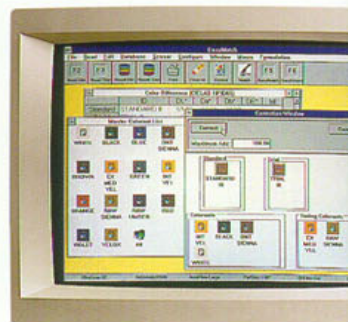


Match ▲

Select the colorants to be used for the match. The computer predicts the amount of each colorant to use. Colorants in your database are displayed on the screen as cans together with pigment color and name or number. Once colorants are chosen, the computer will select the best combinations and predicted amounts to achieve the best match. If you prefer, you can select a group of colorants for the computer to choose from. Groups can be created for frequently used colorants or for pigment characteristics.

Correct ▼

Will automatically correct an off-color trial or batch. Tint pigments can be added to the batch to adjust the color.



Formula Display ▼

The selected formula is displayed showing colorant name, percent, weight or volume and cost. The standard and color formula are visually displayed on the monitor for up to three illuminants. Colorimetric data, colorimetric plot and spectral plot are also displayed.



EasyCorrect ▼

Automatically corrects an off-color trial or batch. Displays percents, correction factors, original weight or volume, add size and new weight or volume along with color data and plots.



What if Capability ▼

You can easily experiment with a formula to see how changes affect the match.



Way To Formulate And Correct Color

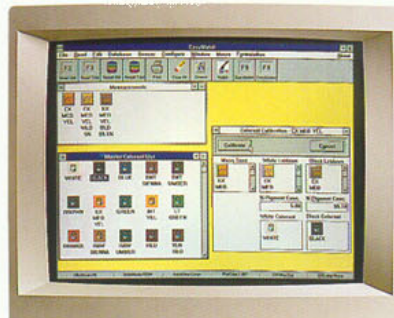
Colorant Editor ▼

The price, strength and specific weight of a pigment in your colorant database can easily be edited.



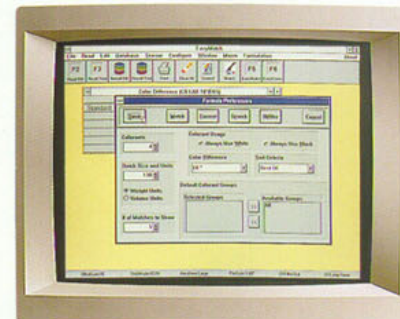
Colorant Calibration ▼

Your colorant database can easily be created by "dropping" primary readings into the colorant calibration window. The use of the masstone to build the database provides precise matches on all colors including dark and chromatics.



Preferences ▼

Default preferences for batch size, weight or volume, number of matches shown, etc. can easily be selected.





11491 Sunset Hills Road
Reston, VA 20190-5280
Phone: 703-471-6870
Fax: 703-471-4237
sales@hunterlab.com
www.hunterlab.com

06/04

ISO 9001:2000 Certified
WINDOWS is a registered trademark of Microsoft Corp.
EasyMatch is a registered trademark of Hunter Associates Laboratory, Inc.