



vista®

for...

FRUIT DRINKS



HunterLab

In a fruit drink, whether there is any natural fruit juice or not, the appearance of haze can be created by the presence of oil flavor emulsions and/or clouding agents such as citric acid. These are added on purpose to create a hazy appearance in some flavors of fruit drinks such as pineapple, lemonade, grapefruit and guava where the consumer expects some scattering. For other fruit drink flavors such as apple or grape juice, the consumer does not have the expectation of a hazy appearance and no additional clouding agents are added.

Vista® offers the unique ability to simultaneously measure both lot-to-lot visible-range transmittance color and haze% of fruit juice products in a single measurement.

Vista® includes easy to navigate embedded EasyMatch® Essentials software and modern data streaming and communications. With its capacitive high-resolution color touchscreen display, Vista® sets a new standard for transmission color and appearance analysis of fruit drinks.



Simultaneously measure transmittance color and haze% in a single measurement



Haze% conforms to ASTM D1003 Procedure B, providing the best correlation to visual assessments



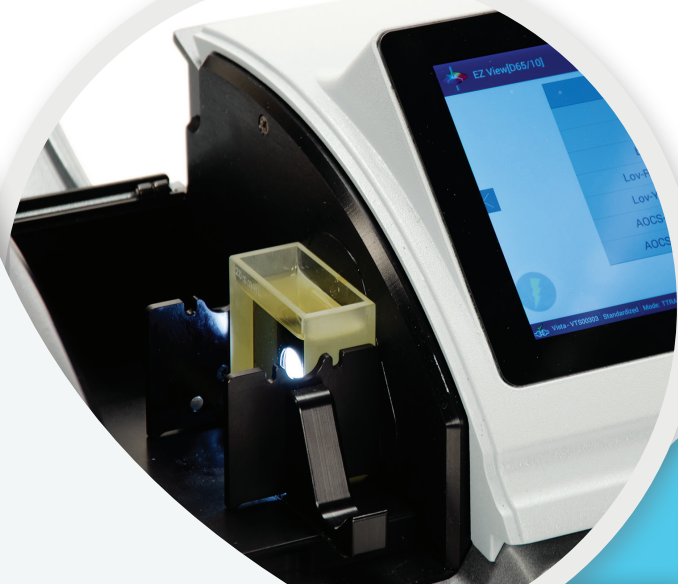
Embedded EasyMatch® Essentials software – no PC required



Flow-through cells available for continuous color and haze measurements

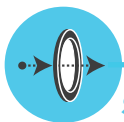


Operator friendly one-touch standardization – no accessories required



measure
color
the way your
eye sees it

The Best Solution for Color Measurement of Fruit Drinks



Simultaneously measure both transmittance color, and haze%, in a single measurement

Measure CIE L*, a*, b*, and haze% compliant with ASTM D1003 Procedure B, along with a host of other color scales and color indices in less than 7 seconds.



Smart user interface and data management

View measurement results and color graphics on the 7-inch 1280x800 capacitive industrial touchscreen, and easily communicate data where it needs to go via USB, USB on-the-go, Ethernet, and built-in email.



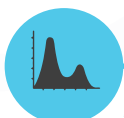
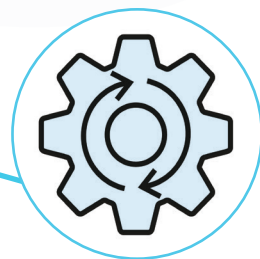
Embedded EasyMatch® Essentials software – no PC required

The onboard EasyMatch® Essentials software is intuitive and easy to navigate. It offers applications to streamline production, allowing users to create their own workspaces to meet their specific application workflow needs. EasyMatch® Essentials comes preloaded with most standard transmittance scales and indices widely used in industry.



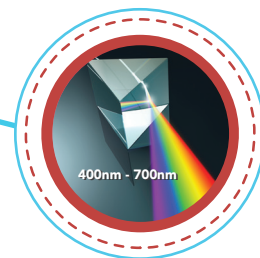
Operator friendly one-touch standardization

Instrument standardization is fully automated, no tiles or accessories are required. Simply press the 'standardize' icon, and the instrument automatically standardizes for both color and haze.



Full spectrum, balanced LED illumination

Illuminating from 400-700nm, the balanced, full spectrum LED illumination is guaranteed to perform to original factory specifications for a minimum of 5 years of continuous measurements for years of worry-free operation.



Keys for the successful measurement of Fruit Drinks



D02-1017-192
Multi-Function Sample Holder



D02-1017-344
Macro Cell Holder for Color
and Haze Measurement

Optional Accessories

L02-1018-683 10mm Flow Through Cell Holder Kit
Includes:

- 10mm Flow Through Cell (C04-1001-958)
- Cell Holder Assembly (D02-1018-678)
- 1 meter, 7mm ID tubing
- (4) Flow Control Chokes (Various apertures) L02-1018-101

20 mm Flow Through Cell Kit also available

