

SpectraTrend® HT



Quick Start Guide

Version 1.0
A60-1015-715

September 22, 2012

This documentation contains proprietary information of Hunter Associates Laboratory, Inc. Its reproduction, in whole or in part, without express written consent of Hunter Associates Laboratory, Inc. is prohibited.

Adobe and Adobe Reader are registered trademarks of Adobe Systems Incorporated. Windows is a registered trademark of Microsoft Corporation. SpectraTrend and EasyMatch are registered trademarks of Hunter Associates Laboratory, Inc

This Quick Start Guide ©2012 Hunter Associates Laboratory, Inc. All rights reserved.

SpectraTrend® HT

Contents of the Quick Start Guide

UnPack and Setup the Instrument	4
Steps 1 through 4	
To Run the Instrument with Software	6
Steps 5 through 8	
To Run the Instrument Standalone.	8
Steps 5A through 8A	
Product Setup Parameters Quick	12
Reference Guide	

Follow these instructions for quick setup and operation of your **HunterLab SpectraTrend HT with EasyMatch® OL ST Software**. Consult your User's Manual as needed.

Product Registration

Help us better support you by completing the product registration card today!

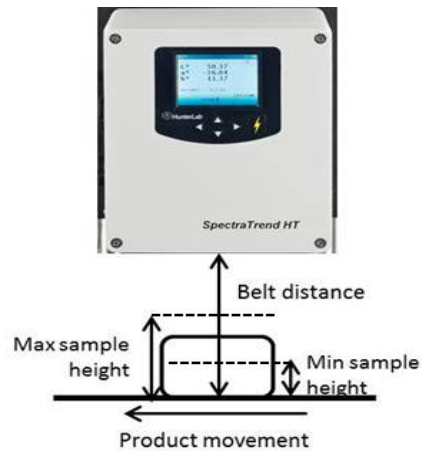
Contact HunterLab

Contact HunterLab at 703-471-6870 if you have any questions regarding the SpectraTrend HT. Information on the product can also be found at www.hunterlab.com.

UNPACK & SETUP THE INSTRUMENT

Step I. Mount the SpectraTrend HT Sensor

- A. Choose a location for mounting the sensor, where:
- the product is stable and represents the product color;
 - occasional access for maintenance is possible;
 - contamination from dust, oil etc. is minimized;
 - (For flexible belt conveyors) the conveyor is supported from below;
 - the sensor is away from an oven band;
 - the temperature DOES NOT EXCEED 50°C (122°F),
 - the Distance from the product is 2.5 to 4.5 inches, and
 - the sensor is mounted on the normal to the product plane.



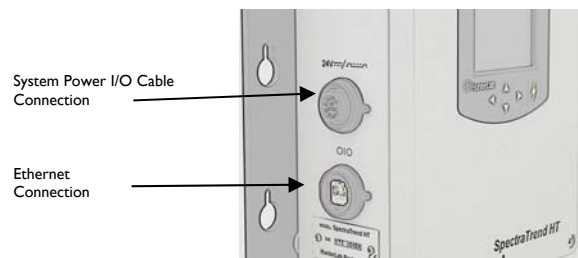
- B. Attach the sensor to the mounting plate and mount the entire assembly in the location desired.

Step 2. Mount the Support Unit

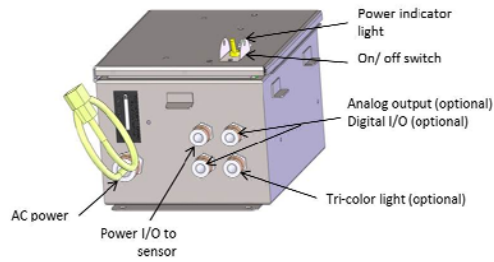
- A. Make sure the power is off.
- B. Choose a location for mounting the support unit, where:
 - the ambient temperature is 10° to 50°C (50°-122° F) and **DOES NOT EXCEED 50°C (122°F)**,
 - the ambient non-condensing humidity is between 5 and 95%, and
 - the power I/O cable can reach the sensor.

Step 3. Connect the Power and the I/O Connections

- A. Plug the male 10-pin round connector into the female connector on the side of the sensor.



- B. Connect the other end of this cable to the support unit.
- C. Connect the power cord to the support unit and to the electrical outlet.
- D. Connect the RJ-45 (Ethernet) cable from the support unit to the appropriate hub on your computer network. Use a crossover cable or adapter if connecting directly from the Sensor to the computer.



E. If an analog output device is to be used, connect the analog output end of the analog output-support unit cable to the output device.

Step 4. Turn the Power On

A. Move the on/off switch on the support unit to the **ON** position and turn on the computer.

To run the instrument with a computer please make sure it meets the following minimum specifications:

Processor	32-bit or 64-bit
Clock Speed	1 GHz
Operating System	Windows XP Professional
Installation Medium	CD-ROM Drive
Monitor	19-inch
Communications Port	Ethernet
Pointing Device	Serial bus or USB mouse
Keyboard	Enhanced
Surge Protection	Surge Protector
Backup Medium	50 GB Hard Drive

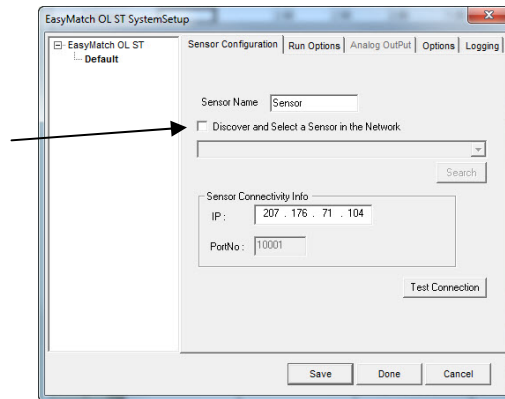
TO RUN THE INSTRUMENT WITH SOFTWARE

Step 5. Install the EasyMatch OL ST Software

- A. Insert the installation CD into your computer.
Navigate to the EasyMatch OL ST folder and select the EasyMatch OL ST—Unicode.exe to begin installation of the Software. Follow the prompts to complete the installation.
- B. Open the software by selecting the EasyMatch OL ST icon on your desktop. The default user name is **ADMIN**. The default password is **hunterlab**.

Step 6. Connect the Sensor to the Software

- A. From the software, select **SYSTEM** from the top menu bar and then,
SYSTEM CONFIGURATION> SYSTEM SETUP
- B. From System Setup, select the Sensor Configuration tab and check the box to Discover the sensor in the network. Then press to **SEARCH** and find the sensor.



- C. When the sensor serial number has been found and the IP address matches, then press 'Save' and 'Done'. The message, '*Please select a System Setup to Edit*' should then stop blinking.

Step 8: Product Setups

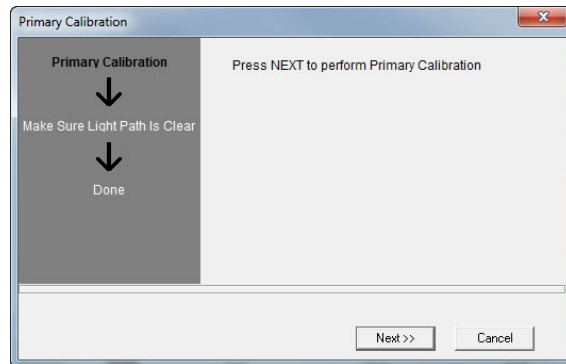
- A. Select **RUN** from the top menu and **PRODUCT SETUP**. Select the + next to the EasyMatch OL ST and then the **RIGHT MOUSE** button to **SELECT** Product Setup 1. Review the Page 1 through Page 4 Tabs to modify a Color Scale, Ill/Obs, Tolerance, and Product Height as needed.

Note: that the product height must be set as a reasonable estimate of this distance.

- B. Press Save & Done. The message, '*Please Select A Product Setup to Edit*' should then stop blinking.

Step 9: Standardize the Sensor

- A. Slide the calibration box onto the track under the sensor.
- B. Choose **CALIBRATION>PRIMARY** from the **top** menu and follow the prompts that appear.
- C. When the standardization is completed, remove the calibrator from the sensor and select, **OK**.



Step 10: Measure Your Products

- A. To take readings, select **RUN > BEGIN** from the main menu.
- B. Select the **JOB FILE** or enter a new job name and **SAVE**.
- C. The system will start to read products.
- D. To **STOP**, select **RUN>END RUN** or press the **STOP RUN ICON**.

To run the INSTRUMENT Standalone:

Step 5A. Standardize the Sensor

- A. Slide the calibration box onto the track under the sensor.
- B. Choose **STANDARDIZE** from the **MAIN** menu and follow the prompts that appear.
- C. When the standardization is completed, remove the calibrator from the sensor and select the right arrow to return to the main menu.



Step 6A. Complete Your Product Setups

- A. Select **PRODUCT SETUP** from the **MAIN** menu.



- B. Select the setup to configure.
- C. Choose each setup tab in turn and set the parameters desired for the specific product to be measured using this setup.

- D. Select **RUN CONFIG** and check the default values. These should be changed to suit the application. See manual for details.
- E. Repeat Steps C through E for each product measured.
- F. Use the **GO** (Read) button to return to the Main menu.

Step 7A. Set the Color Tracking Thresholds

- A. When Track Color is enabled, (a non-zero value is set) the product will only be registered as present if the measured color is within the preset tolerance band of the target color.
- B. To set color tracking, from the **Product Setup** menu select **TOLERANCES** and **COLOR TRACKING**.
- C. To enable color tracking, set the tolerances. To disable, set all values to zero.

Step 8A. Set the Height Trigger (if desired)

- A. When the **HEIGHT TRIGGER** is set to **YES**, the sensor will only flash when the sample is within the selected range for Min and Max height.
- B. To turn on the **Height Trigger**, from the **Product Setup** menu select **Run Config**, and scroll down to **Height Trigger** and set to **YES**.
- C. Set the appropriate Min and Max height for the product.

For more information, refer to the SpectraTrend HT User's manual.

