

# User's Manual for Aeros<sup>®</sup> with EasyMatch<sup>®</sup> Essentials



**Hunter Associates Laboratory**  
11491 Sunset Hills Road  
Reston, Virginia 20190 USA  
**[www.hunterlab.com](http://www.hunterlab.com)**

A60-1018-193 Version 1.2  
For EasyMatch<sup>®</sup> Essentials Version 1.03.0070 and Above

## Copyrights and Trademarks

This documentation contains proprietary information of Hunter Associates Laboratory, Inc. Its reproduction, in whole or in part, without express written consent of Hunter Associates Laboratory, Inc. is prohibited.

Aeros and EasyMatch are registered trademarks of Hunter Associates Laboratory, Inc.

Windows is a registered trademark of Microsoft Corporation in the United States and other countries.



Caution: If the equipment is used in a manner not specified by the HunterLab, the overall safety may be impaired. - The instrument is for indoor use only and not suitable for a wet location.



Caution: There is a potential of a UV Light hazard in using this instrument. Please avoid looking directly at the light. The frequency of this flashing light is in the range of sensitivity for those prone to epileptic seizures. When reading a sample, the illuminated spot flashes in the range of 5 Hz to 6 Hz. User discretion is advised.



## Safety Notes

For your safety when using the Aeros, you should pay attention to the following types of statements in this User's Manual:

- General safety instruction that should be observed at all times while operating the instrument.
- Specific safety instruction critical to the type of instrument operation being explained in the manual where the caution appears.
- Use of this equipment in a manner not specified by the manufacturer may impair the protection afforded by the equipment.
- Danger of electric shock if liquids are spilled and fire if volatile or flammable liquids are spilled. Use care when measuring liquid samples.
- This instrument sensor moves up and down during standardization and creating a measurement profile. Please keep fingers and other items out of the way of the sensor.
- The turntable will rotate if turned on in Read Options > Measurement configuration. Please take care to remove fingers, jewelry and clothing to prevent damage.
- The Aeros is for indoor use only at an altitude of up to 2000m and pollution degree 2.

## Contents

<b>SETTING UP THE AEROS .....</b>	<b>7</b>
Standard Accessories .....	7
Power Jack.....	7
Power Switch.....	8
Keyboard And Mouse .....	8
Front And Rear USB Connectors.....	8
Ethernet Port.....	8
Moving The Unit.....	9
<b>TAKING A SIMPLE MEASUREMENT .....</b>	<b>11</b>
What Is HunterLab Aeros & EasyMatch Essentials? .....	11
Connecting The Sensor And Taking A Measurement .....	11
<b>NAVIGATING THE ESSENTIALS SCREEN .....</b>	<b>17</b>
Tools: Read.....	17
Tools: View Flippers.....	17
Tools: Status Bar .....	18
INFORMATION .....	18
STANDARDIZATION STATUS.....	18
JOBS STATUS .....	18
WORKSPACE STATUS.....	18
Tools: Recall Measurements .....	18
Tools: Move Sensor To Top .....	19
Tools: View Options .....	19
Tools: Workspace & System Settings.....	19
Tools: Jobs.....	19
<b>TOOL BAR: JOBS FUNCTION .....</b>	<b>21</b>
Jobs .....	21
JOBS > NEW.....	21
JOBS > OPEN.....	21
JOBS > SAVE & SAVE AS .....	22
JOBS > PRINT .....	22
JOBS > DATA MANAGEMENT .....	24
JOBS > HELP.....	29
JOBS > ABOUT .....	29
<b>TOOL BAR: WORKSPACE &amp; SYSTEM SETTINGS .....</b>	<b>33</b>
Workspace > Color Scales .....	33
Workspace > Read Options .....	37
READ OPTIONS > OPTIONS .....	37
READ OPTIONS > MEASUREMENT CONFIGURATION .....	40
Workspace > Standard And Tolerances .....	42
AUTOTOLERANCES SETTING .....	45
TOLERANCES .....	46
Workspace > Views.....	46

Workspace > New Workspace.....	47
System Settings: Standardization .....	47
System Settings > Diagnostics .....	49
TESTING THE AEROS FOR COLORIMETRIC REPEATABILITY .....	49
READING THE GREEN TILE.....	52
RUN AUTO DIAGNOSTICS .....	53
ADVANCED TESTS.....	53
System Settings > Preferences .....	57
PREFERENCES > GENERAL.....	57
PREFERENCES > PRINT .....	60
System Settings > User Manager.....	60
<b>TOOLBAR: OPTIONS (VIEWS).....</b>	<b>64</b>
Views > EZ View.....	64
Views > Color Data Table .....	65
Views > Spectral Data Table .....	67
Views > Spectral Plot .....	68
Views > Trend Plot.....	69
Views > Color Plot.....	70
<b>RECALL STANDARD .....</b>	<b>73</b>
<b>SPECIAL FUNCTIONS .....</b>	<b>75</b>
Auto-Exporting Data Through A Network Connection .....	75
OPTION A: CONNECT TO A NETWORK HUB USING AN ETHERNET .....	75
OPTIONAL B: CONNECT TO A HOTSPOT THROUGH THE WIFI CONNECTION .....	77
Auto-Exporting Data Via Direct Connection Between Aeros And A Computer .....	79
Tips & Tricks: Recover Unsaved Measurement Data.....	83
HunterLab File Service Package.....	83
To Install the File Service Package.....	83
Setting Up File Storage From Aeros (Client) Side .....	84
<b>SPECIFICATIONS .....</b>	<b>89</b>
Operating Conditions.....	89
Physical Characteristics.....	89
Conditions Of Illumination And Viewing.....	90
Instrument Performance .....	90
Measurement.....	91
Regulatory Notice .....	92
<b>FEATURES, ACCESSORIES &amp; MAINTENANCE .....</b>	<b>93</b>
Aeros Maintenance & Safety .....	93
CLEANING THE AEROS .....	93
CLEANING THE WHITE TILE .....	93
CLEANING THE BLACK GLASS AND GREEN TILE.....	93
POWER REQUIRED.....	93
SAFETY .....	94
<b>WHEN YOU NEED ASSISTANCE .....</b>	<b>95</b>

**INDEX** ..... **97**

**TABLE OF FIGURES** ..... **99**



## Setting Up the Aeros

The Aeros system contains two major components – the sensor head and the turntable base. The sensor head contains the spectrophotometer with an LED light source, distance measuring components and a touch screen for Essentials. The turntable base provides the electronics and the mount for the sensor with automated vertical positioning and horizontal manual adjustment. The turntable rotates the product under the optical sensor.

### ***Standard Accessories***

- Calibration Box with calibrated white tile, black glass and green diagnostics tile
- Certificate of Traceability
- Power Supply
- Aeros Quick Start Guide
- 12-in and 6-in Sample Dishes
- USB Flash Drive



Figure 1. Calibration Box

### ***Power Jack***

The instrument is supplied with a 24 VDC (3.75A) power supply. The power supply is plugged into the back of the instrument as shown along with the Ethernet port and the USB port.

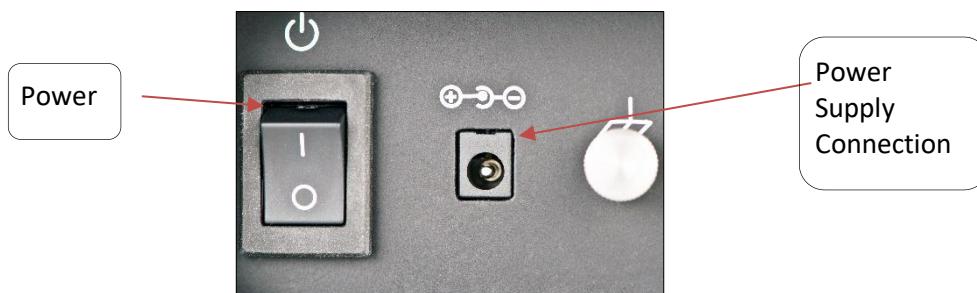


Figure 2. Rear View with Connectors

**CAUTION: Use only the power cord included with this instrument or a replacement obtained from HunterLab. Be certain that the power cord is in good condition before connecting it.**

## Power Switch

To turn the instrument on, press the rocker switch on the back of the instrument.

## Keyboard And Mouse

The Aeros works with the following keyboard and mouse:

- L02-1017-434 Wireless keyboard and mouse kit.

To use this accessory, turn the power off. Plug in the micro USB adaptor to the rear of the instrument and then attach the nano-receiver for the keyboard into the USB port. Install the batteries into the keyboard/mouse and turn the power back on.

## Front And Rear USB Connectors

There are two USB connectors on the Aeros. The one in the front is typically used for exporting jobs and workspaces, backing up the instrument and updating software. The USB port on the back of the instrument is typically used to connect a printer or a keyboard to the Aeros.

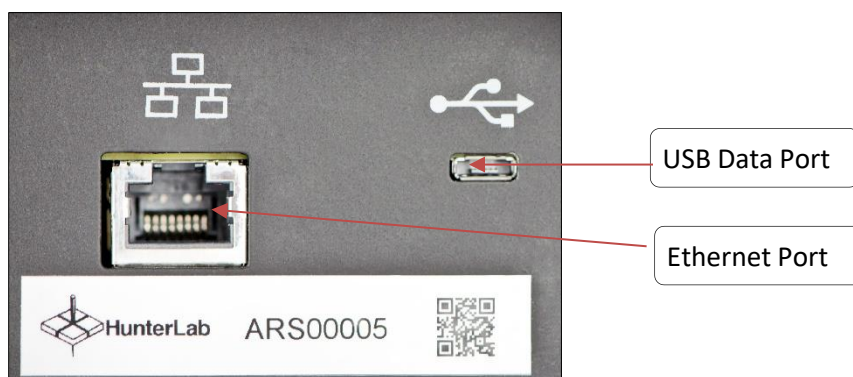


Figure 3. USB Port on Rear of Instrument

## Ethernet Port

This port is used to connect the Aeros to:

- Computer or to a network with the purpose of sending data (ASCII) to a server.
- Connect with EasyMatch QC and EasyMatch ER
- Remote Support
- Network printer.



### ***Moving The Unit***

Use care in moving the instrument which weighs 50 lbs. Training on lifting heaving objects is recommended. To lift from the box, a two-person lift is suggested. When moving it from a table to another location, balance this instrument by lifting from behind and by the base.

If moving the Aeros any distance, please secure the optics using **DIAGNOSTICS > ADVANCED > PARK** for Shipping.



## Taking a Simple Measurement

### *What Is HunterLab Aeros & EasyMatch Essentials?*

Aeros is a reflectance-only color measuring instrument capable of measuring the color of irregularly shaped/textured products. All samples are measured by placement in a tray or container under the sensor head. With features like Auto Height Positioning, a rotating sample platform, large touch-screen display, and smart communications, the innovative Aeros can measure products like coffee beans, snack foods, plastic pellets, even industrial minerals.

### *Connecting The Sensor And Taking A Measurement*


After unpacking and setting up the instrument, turn on the power using the rocker switch on the back of the instrument base.

Once inside the software, the main measurement screen is displayed – **COLOR DATA TABLE** (D65/10).

Figure 4. Measurement Screen



The instrument is automatically connected and this is reported on the status bar. Next, the unit must be Standardized.

- Press the **WORKSPACE** icon  and select **STANDARDIZATION**. User will be prompted to remove all samples from under the sensor. .

Alternately, press the **STANDARDIZATION** status area on the status bar to initiate Standardization.

- MOVE SENSOR TO TOP:** Press **OK** to move the sensor to the highest position.

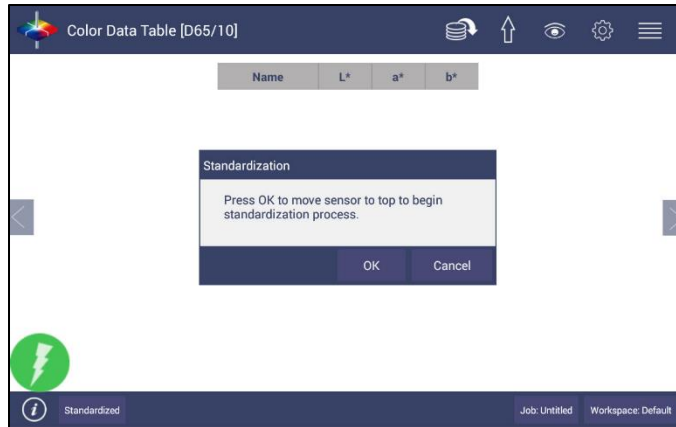


Figure 5. Sensor Moves to Top

- **READ BLACK GLASS:** When the sensor stays at the top, attach the standardization box to the sensor. Then attach the black glass to standardization box and press **READ**.

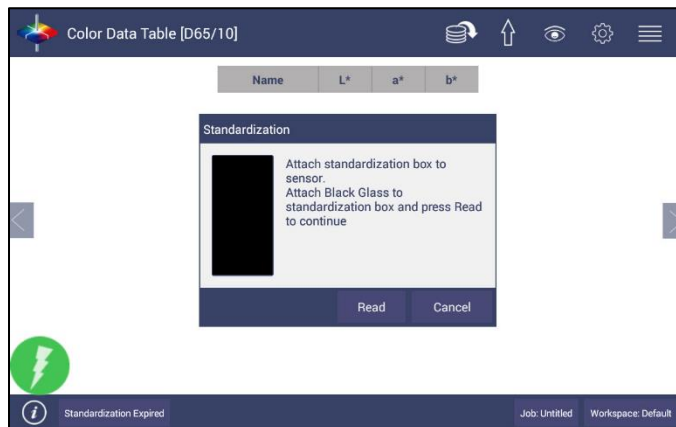


Figure 6. Read the Black Glass for Bottom-of-Scale

- **READ WHITE TILE:** Remove the black glass and attach the calibrated white tile to standardization box. Press **READ** to continue.



Figure 7. Read the White Tile for Top-of-Scale.

## User's Manual for Aeros and EasyMatch Essentials v 1.2

- Remove the calibration box when standardization is completed. Click **OK**.

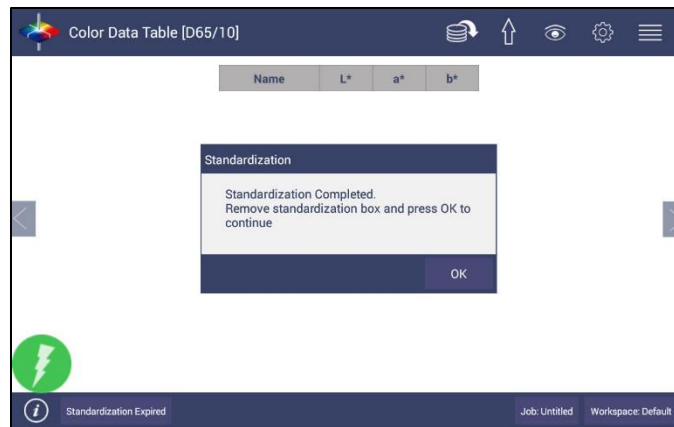


Figure 8. Completed Standardization

- If the user has selected the **GREEN TILE READING DURING STANDARDIZATION** under **WORKSPACE > PREFERENCES**, the user will be prompted to read the green tile too. The target values are the ones on the back of the green tile.
- Standardization is updated and reported as **STANDARDIZED** on the bottom of the screen.



Figure 9. Standardization Status Bar

- Create a workspace for your product. To **CREATE A NEW WORKSPACE**: From the **WORKSPACE** Menu, press **NEW WORKSPACE** and enter a name for this Workspace. A new job will be opened together with this new workspace.

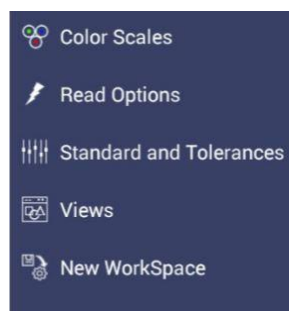


Figure 10. New Workspace

- **PREPARE SAMPLE:** Place the sample dish on the turntable.

**Note:** The active workspace name is displayed in the lower right corner of the screen.

- **CONFIGURE THE NEW WORKSPACE:** With this new workspace open, you can start to change the settings in Color Scales, Read Options, Standard and Tolerances, Views and View Options. All these changes will be automatically saved in this new workspace.
- **DEFAULT SETTINGS:** Following are the default settings for a new workspace:

**Table 1. Workspace Parameters**

Parameter	Selection
Color Scales	CIE L*a*b*
Illuminant	D65/10
Indices	None
Differences	None
Read Options > Options	Prompt for Sample Name, Auto Save
Read Options > Measurement Configuration	Turntable ON, Auto Height selected, Measurement time = 5 sec
Standard and Tolerances	None
Views	Color Data Table only
View Options for Color Data Table	Latest Data First selected, Precision = 2

- When **AUTO HEIGHT** is selected as default, the sensor head will adjust its position automatically for each sample measurement.
- Users can also choose to read samples with the sensor head at a fixed distance. **FIXED HEIGHT:** No matter what height the sensor is detected, it will use the height that customer enter here to do color calculation. This is used when the sample is hard to detect the height (e.g. sample has absorption at 880nm. The laser of height sensor is absorbed by sample)
- **CREATE SAMPLE PROFILE** is covered in **WORKSPACE > READ OPTIONS > MEASUREMENT CONFIGURATION** portion of this manual. (Create sample profile is to use the detected height for all sample measurements. If sample height out of the desired range (+/- 0.5inches), then it will prompt the error. Sensor will use the detected height to calculate each sample measurement.



**Figure 11. Read Options: Measurement Configuration**

- Now your instrument is ready to read your product under this new workspace. If you'd like to start a new job for this product, you can press **NEW JOB** and load this configured workspace to continue.
- **MAIN MEASUREMENT SCREEN:** The Color Data Table view shows the configured Color Scale results for the standard and sample measurements in the job. The configured tolerances can be applied to the Job and Pass/Fail results will also be displayed. To add the color differences, indices and tolerances to the Color Data Screen, see **WORKSPACE > COLOR SCALES** and **WORKSPACE > STANDARD AND TOLERANCES**.
- To add a product standard and tolerances, see **STANDARDS AND TOLERANCES**. To change the color scale, etc., see **WORKSPACE > COLOR SCALES**. The setups are saved automatically in Workspace.
- A long press on the Sample name will show a menu with the following options:
  - **SET AS STANDARD** – to set the sample as Standard.
  - **RENAME** – to rename the sample.
  - **DELETE** – to delete the sample.



Figure 12. Changing, Renaming or Deleting a Sample

- A long press on the Standard name will show a menu with the following options:
  - **EDIT** – to edit the standard. If Edit is selected, the Workspace > Standard and Tolerances dialog box is presented to allow for editing the name, assigning tolerances or changing the type of standard.
  - **DELETE** – to delete the standard. The deleted Standard is reverted into the samples list with its original name.



Figure 13. Edit/Delete a Standard



## Navigating the Essentials Screen

The EasyMatch Essentials Tools and Status features are shown below.

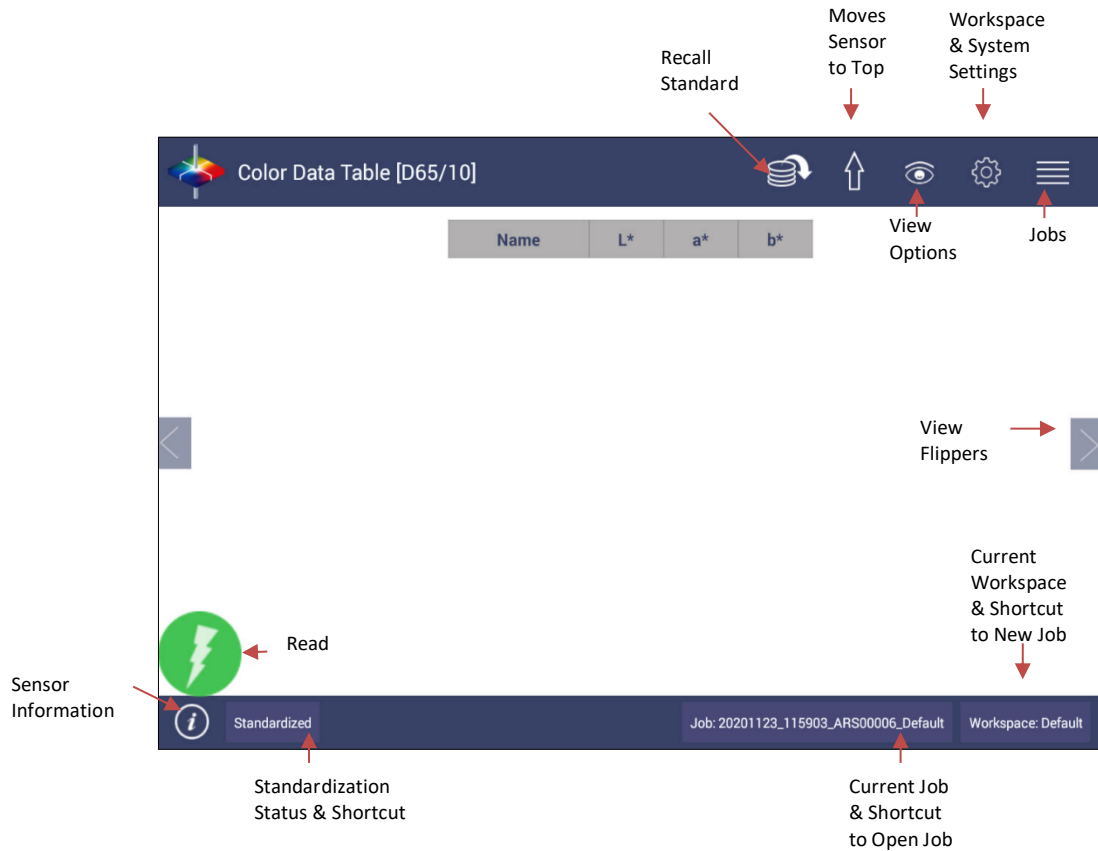


Figure 14. User Interface Screen for Aeros & Essentials

### Tools: Read



Samples are read using this key. This tool can be moved around the screen by pressing and moving the icon.

### Tools: View Flippers



Switching between Views can be accomplished by using the semi-transparent **NEXT** and **PREV** buttons placed at the side edges of the screen or by swiping left or right with two fingers on the screen.

## Tools: Status Bar

### INFORMATION



The sensor type and serial number is shown at the bottom left side of the System Bar when the **i** is pressed. When application security is enabled and the user logs into Essentials, the User Account will also be shown in the Information box.



Figure 15. Sensor Serial Number

### STANDARDIZATION STATUS

The current state of standardization is reported. To initiate standardization, one can press on the **SENSOR STATUS** to open the standardization dialog.

### JOBS STATUS

**JOB** Status is reported on the bottom right side of the System Bar. To open a Job, one can click on the **JOB NAME** in the status bar.

### WORKSPACE STATUS

**WORKSPACE** Status is reported on the bottom right side of the System Bar. . To load a Workspace, click on the **WORKSPACE NAME** in the status bar.

## Tools: Recall Measurements



Allows for quick recall of Standards and Samples.

### ***Tools: Move Sensor To Top***



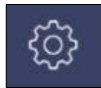
This tool moves the sensor head to the top.

### ***Tools: View Options***



This menu shows the configuration options for the active view. A total of six views are available. Each view shows a different option. Views can be added or removed in **WORKSPACE > VIEWS**.

### ***Tools: Workspace & System Settings***



The **WORKSPACE** menu sets up the data screen with **MEASUREMENT COLOR SCALES, READ OPTIONS, STANDARDS, TOLERANCES** and **VIEWS**.

**SYSTEMS SETTINGS** initiates **STANDARDIZATION, DIAGNOSTICS, PREFERENCES**, and the **USER MANAGER** for System Security.

### ***Tools: Jobs***



A **JOB** is a collection of all the sample measurements and a workspace used for a task, product, or customer. Jobs are the readings of EasyMatch Essentials. Jobs can be created for many different reasons, such as to hold data for a certain customer or a specific product line. Each operator may maintain their own job with preferences or create separate jobs for different operations.

A **WORKSPACE** is a collection of the measurement parameters for a job along with tolerances and the standard, i.e. analogous to word processing documents containing text and formatting. Each job has only one workspace.



## Tool Bar: Jobs Function

Jobs Icon



Under the Job function, the following tasks can be accomplished:

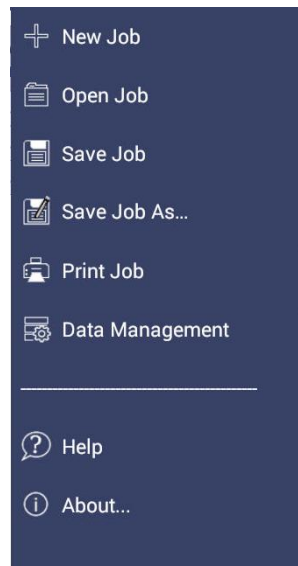


Figure 16. Job Menu

### Jobs

**JOBS VS. WORKSPACE:** A job consists of samples measured according to a specific workspace.

A workspace is a template with measurement conditions such as **STANDARD & TOLERANCES, COLOR SCALE, INDEX, ILLUMINANT**, etc. There can be only one workspace associated with a job. The main tool bar provides the options to create a **NEW JOB**, **OPEN AN EXISTING JOB** and **SAVE A JOB**.

#### JOBS > NEW

When click **NEW JOB**, the **LOAD WORKSPACE** dialog will pop out. The default selected workspace is the current workspace. User can change the workspace and click **LOAD** then the selected workspace is opened in the new job. Once the Workspace has been loaded to the New Job, the Workspace name associated with this job cannot be edited.

- **Shortcut:** press Workspace name in the lower right status bar

#### JOBS > OPEN

**OPEN** a saved Job: A list of available jobs under the current path are displayed for selection. If the job that is needed exists in another folder, then it is an option to change the folder. When the job to be opened is displayed select the file and press **OPEN**. We also provide a short cut for Jobs: Open in main tool bar.

- **Shortcut:** press job name in the status bar on the lower right.

## User's Manual for Aeros and EasyMatch Essentials v 1.2

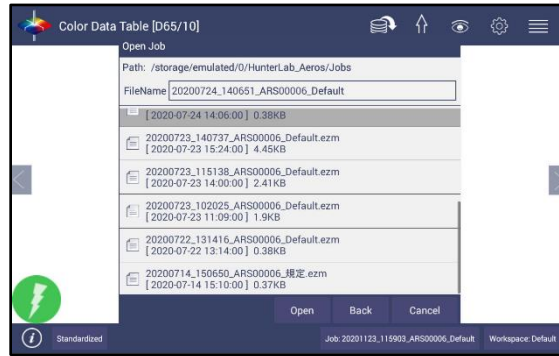


Figure 17. Open A Job

### **JOBS > SAVE & SAVE AS**

**SAVE THE JOB** under the desired name: To save a job, **SELECT THE FOLDER, NAME THE JOB** and **SAVE THE JOB** contents into a file. These files have an '.ezm' or a CSV extension. There will be a default name filled in Filename box as date&time&instrument#&workspace. You can edit it if needed.

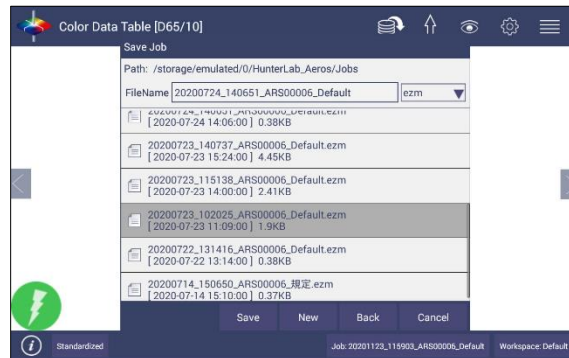


Figure 18. Save A Job

### **JOBS > PRINT**

**PRINT AN OPEN JOB** using the parameters set up under **WORKSPACE & SYSTEMS SETTINGS > PREFERENCES**.

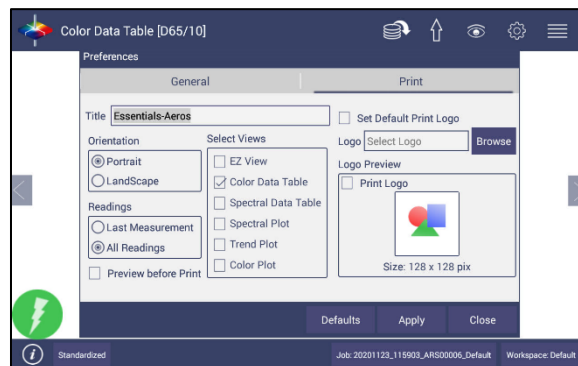


Figure 19. Workspace & System Settings > Preferences > Print

Drivers included in the Aeros are shown below. Additional printer drivers can be added under **WORKSPACE > DIAGNOSTICS > ADVANCED**.

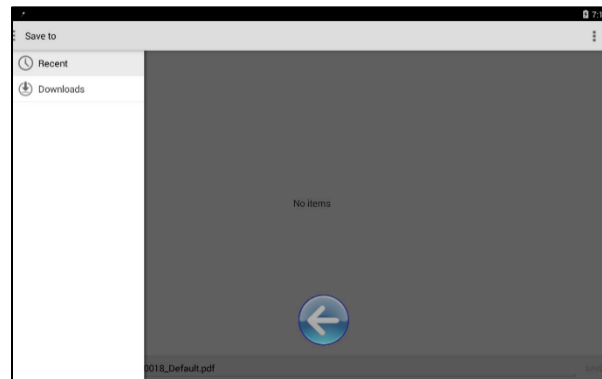
**Table 2: Printer Drivers Included**

Printer	Driver
Canon	Canon Print Service 4.4+
HP	HP Print Service Plugin 4.1+
Epson	Epson Print Enabler 4.4+
Konica Minolta	Konica Minolta Print Service Plugin 4.4+
Kyocera	Kyocera Print Service Plugin 4.4+
Lexmark	Lexmark Print Service Plugin 4.4+
Sharp	Sharp Print Service Plugin 4.4+
Xerox	Xerox Print Service Plugin 4.4+

- Printing can be downloaded to a pdf file by selecting, **SAVE AS PDF**. Once this is selected, the parameters for the output are presented. Please save the file to the download folder.



**Figure 20. Save as PDF.**



**Figure 21. Save PDF to Downloads File**

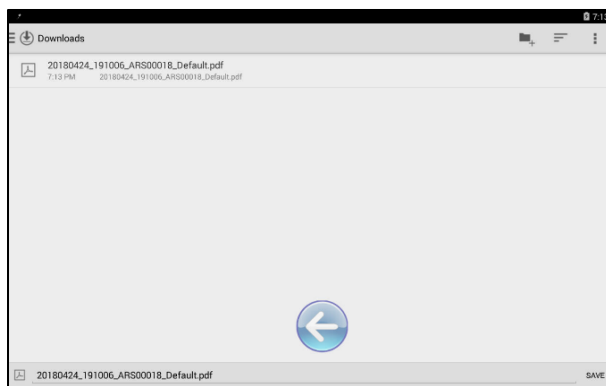


Figure 22. Download File Contents

## JOBS > DATA MANAGEMENT

Standard(s) and sample measurements are saved in Job files and database along with the sensor information. The saved measurements are also associated with a respective Workspace and Job.

The **DATA MANAGEMENT** contains the features to **RECALL**, **IMPORT**, **EXPORT**, **EMAIL A JOB** and **BACKUP/RESTORE**.

- **RECALL** the measurements from the database.
- **IMPORT** a selected Job(s), Standard(s), Workspace(s)Diagnostics, photos for logo print setup and others from a USB flash drive.
- **EXPORT** the Job(s), Standard(s), Workspace(s), Diagnostics, pdf reports and others to a USB flash drive.
- **EMAIL** the selected Job(s), pdf reports and other files.
- **DELETE** Job(s), Standard(s), Workspace(s), Diagnostics, pdf reports and others.
- **BACKUP** the Hunter Lab folder (all jobs, database and user manager settings) into a USB Flash drive.
- **RESTORE** the Hunter Lab folder (all jobs, database and user manager settings) from a USB Flash drive.

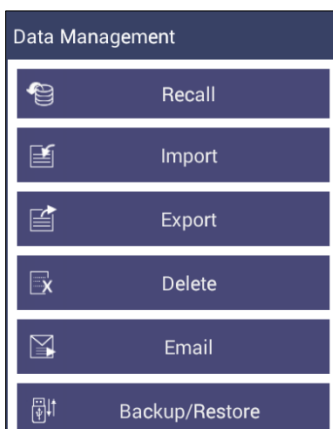


Figure 23. Data Management Menu



### *Jobs > Data Management > Recall*

Recall measurements that have been stored to a job. This feature enables the user to recall the Standard/Sample(s) stored in the Database into the current running Job. A shortcut to this function is available on the toolbar.

Click **RECALL** option in Data Management, a dialog will be displayed where the user can recall the measurements from the database by **SELECTING THE TYPE**:

- Show The Standard Associated With A Specified **CATEGORY**.  
When this options is selected, the standards list is filled with the standards associated with the selected Category from the **SELECT STANDARD CATEGORY** list. All matching samples are filled into the sample list. To narrow the list, the user can select the samples only associated with the selected standard.
- Show All The Measurements In The Selected **JOB**  
When this option is selected, the standard and samples for that job are listed.
- Show The **STANDARDS/SAMPLES** In The **CURRENT WORKSPACE**  
When this option is selected, the list is filled with the standards and samples associated with the current workspace. To narrow the sample list, the user can select the samples only associated with the selected standard.
- Show The **IMPORTED STANDARDS**  
When this option is selected, the standards list is only filled with the standards imported into the database. After selecting the measurements click **RECALL** placing them into the active Job.

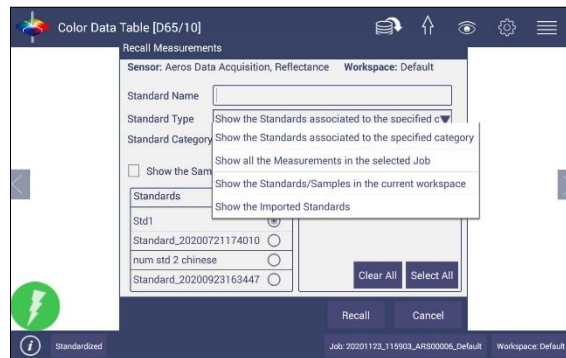


Figure 24. Recall Measurements

### *Jobs > Data Management > Import*

This feature allows the user to import the below data from a USB flash drive into the instrument. Data can be one file or multiple files. All selected files should be in the same file path location. The following data can be imported: **JOBS, STANDARDS, WORKSPACE, DIAGNOSTICS,** and **OTHERS.**

- **IMPORT JOB**

This option allows the user to browse and select a Job file(s) (.ezm) from the USB flash drive and import into the instrument. If a file name already exists, then the name will be incremented numerically. To use these functions, a USB flash drive must be present in the port.

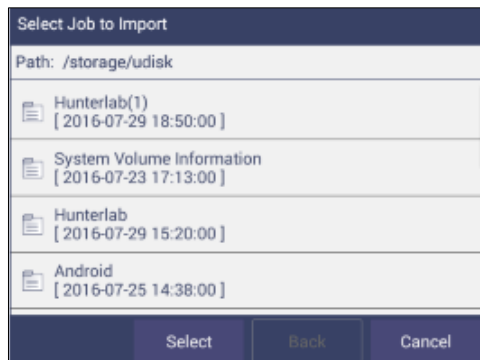


Figure 25. Import Job

- **IMPORT STANDARD**

This option allows the user to browse and select a Standard(s)(extension .std) from the USB flash drive and import into the database. If required, the Standard Name can be changed.

- **IMPORT WORKSPACE**

This option allows the user to browse and select a Workspace(s) (extension .wsp) from the USB flash drive and import into the database. If the workspace already exists, then the user is prompted to specify a different name.

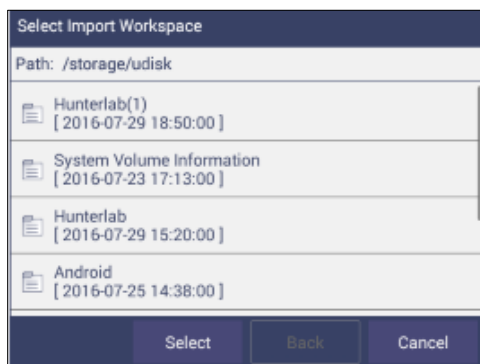


Figure 26. Import Workspace

- **IMPORT DIAGNOSTICS**

This option allows the user to browse and select a Diagnostics file from the USB flash drive for import into the instrument database.

- **IMPORT OTHERS**

This function is available to import other items such as a logo for the printed report. Once the logo is imported, go to **WORKSPACE & SYSTEM SETTINGS > PREFERENCES > PRINT** to add the logo to a report.

***Jobs > Data Management > Export***

This feature allows the user to export the below data from instrument into a USB flash drive. Data can be one file or multiple files. All selected files should be in the same file path location. The following data can be exported: Jobs, Standards, Workspace, Diagnostics and Others (e.g. all files in HunterLab folder, and all pdf reports in Download folder).

- EXPORT JOB**

This option allows the user to browse and select an existing Job(s) (.ezm) or the current active Job data and copy into a USB flash drive either in **CSV** or **EZM** file format. While exporting into EZM format, the current active Workspace settings can be applied. The color data shown in the Color Data View and the Spectral Data is saved in a CSV file. CSV Files can be exported through **EXPORT > OTHERS**.

**Note: In Rev 1.03.0070 and above, the .csv file will be automatically created/updated when a job is saved. CSV files are stored at HUNTERLAB > CSV FOLDER.**

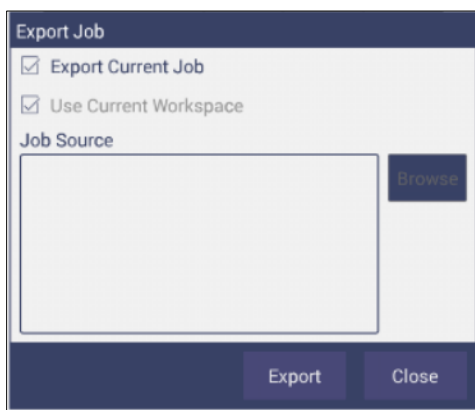


Figure 27. Export Current Job

- EXPORT STANDARD**

This option allows the user to browse and select an existing Standard(s) in the database and copy into the USB flash drive as a file (.std).

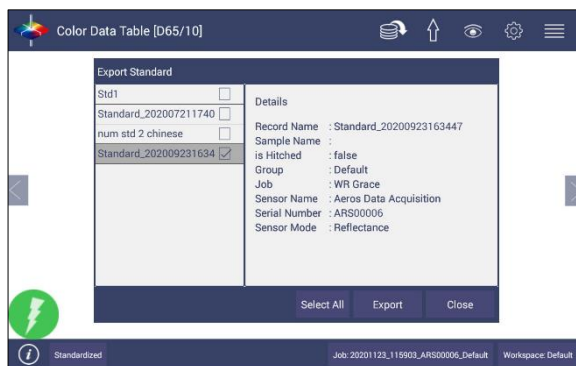


Figure 28. Export Standard

- EXPORT WORKSPACE**

This option allows the user to browse and select an existing Workspace(s) in the database and copy into the USB flash drive as a file (.wsp). To use the above functions, a USB flash drive must be present in the port.

- **EXPORT PDF**

This allows the user to select a PDF file from the Downloads folder to export. Switch to the Download folder in the dropdown list and then select the pdf files to export.

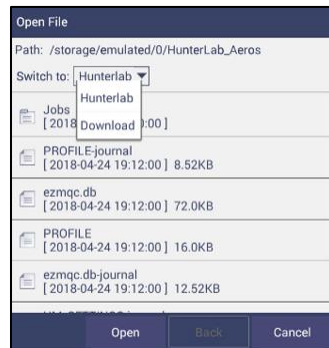


Figure 29. Select Download Folder for PDF File Export

### *Jobs > Data Management > Email*

Saved Jobs can be emailed if there is an active internet connection. When the **EMAIL** option is clicked, the following screen is shown prompting the user to browse and select a user and enter the recipient mail address. You can email any file in HunterLab folder as well as in the downloads folder. Data can be one file or multiple files, e.g. csv file in **HUNTERLAB > CSV FOLDER**, pdf reports in Download folder. In Rev 1.03.0070 and above, the .csv file will be automatically created/updated when a job is saved. CSV files are stored at **HUNTERLAB > CSV FOLDER**. These .csv files can be emailed.

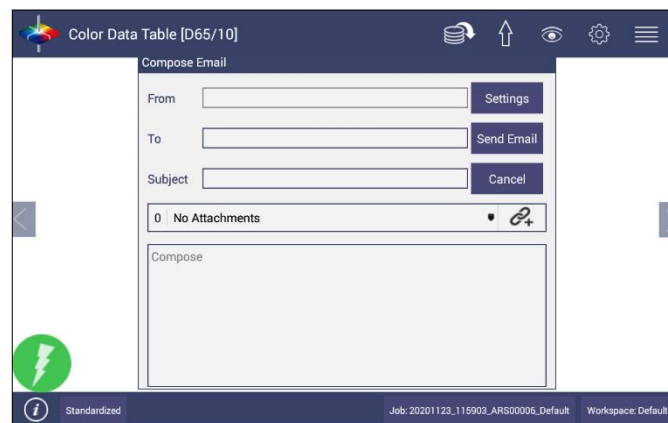


Figure 30. Enter an Address to Email a Job

- **EMAIL SETTINGS**

Click **MAIL SETTINGS** button to configure the SMTP mail server configuration (Port, Server) as shown below. The mail settings configuration is mandatory to enable the mail job feature in the application. When done, press **SEND**.



Figure 31. Enter SMTP Mail Server Information

- ***JOBS > DATA MANAGEMENT > DELETE.*** The Delete function will allow deletion of Jobs, Standards, Workspace, Diagnostics and others. Data can be one file or multiple files. All selected files must be in the same file path location. In addition, one can delete PDF files from the Downloads folder. .
- ***JOBS > DATA MANAGEMENT > BACKUP/RESTORE.*** The ***BACKUP*** function will copy the entire Hunter Lab folder to a thumb drive. ***RESTORE*** enables the user to copy the backup folder of a thumb drive and upload to the Aeros. .

#### ***JOBS > HELP***

To access the onboard manual, use Jobs: Help. **NOVICE HELP** can also be enabled under ***PREFERENCES> GENERAL.***

#### ***JOBS > ABOUT***

The **ABOUT** menu provides information about HunterLab and the current software version.

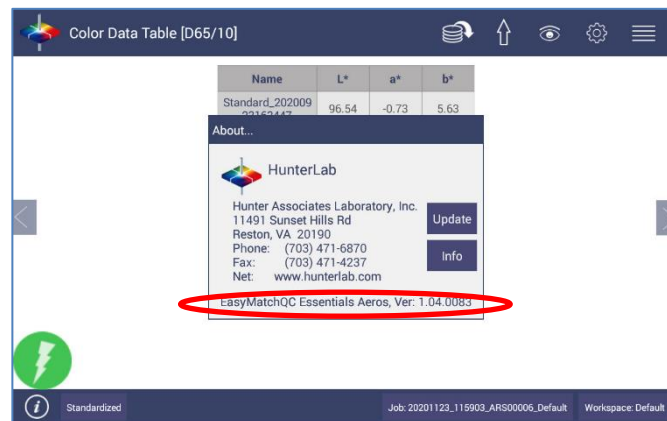


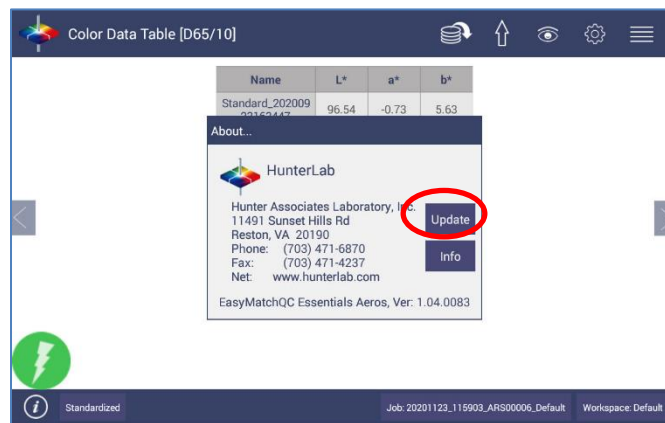
Figure 32. Job > About the Software

To update the software version from a USB flash drive, download the upgrade onto the flash drive. Then insert the USB flash drive into the port on the front of the instrument.



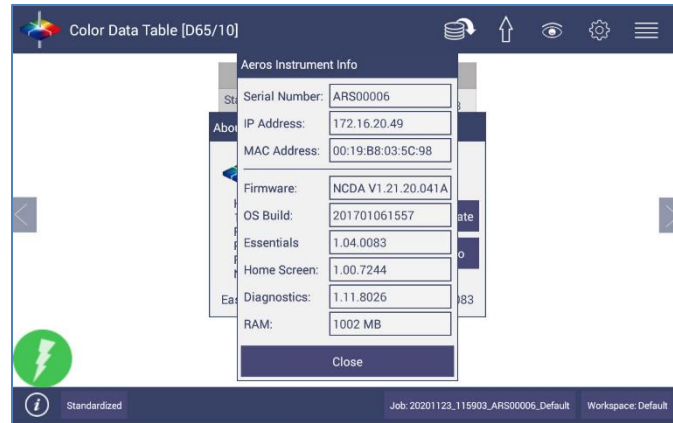
Figure 33. USB port on instrument

Open the ***JOBS > ABOUT*** menu and press ***UPDATE*** to continue. After update, open Essentials and it will prompt to enter or create an Administrator Account. If needed, you can edit this account in User Manager later.



## User's Manual for Aeros and EasyMatch Essentials v 1.2

For detailed information on firmware, enable a CMR and more, please press the **INFO** button on the screen.



*Figure 34. Instrument*





## Tool Bar: Workspace & System Settings

### Workspace Icon



Under the **WORKSPACE & SYSTEMS SETTINGS**, the following tasks can be accomplished:

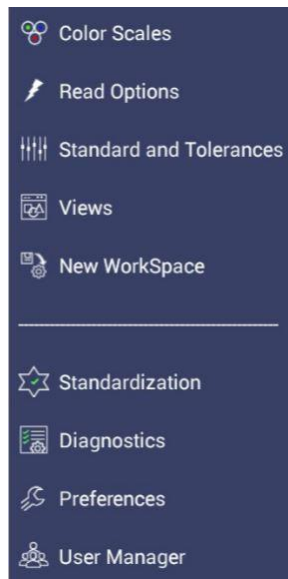


Figure 35. Workspace Parameters

### Workspace > Color Scales

- Color Scales provide four tabs in which the **SCALES**, **INDICES**, **DIFFERENCES** and **ILLUMINANT/OBSERVER (ILL/OBS)** can be configured.

Color Scales	
Scales	Ill/Obs
CIELAB	<input checked="" type="radio"/>
CIELCh	<input type="radio"/>
HunterLab	<input type="radio"/>
XYZ	<input type="radio"/>
Yxy	<input type="radio"/>
<input type="checkbox"/> Show Color Difference Scales	
<div> <span>Defaults</span> <span>Apply</span> <span>Cancel</span> </div>	

Figure 36. Color Measurement Scales

- The Scales Tab shows the five scales available for measurement. Select the absolute scale or color difference scales (if a standard is selected). Press **APPLY** and begin to read your samples.

- The **ILLUMINANT/OBSERVER** tab displays combination selections for these parameters. To see all of the choices, you can scroll through the selections by viewing the screen.

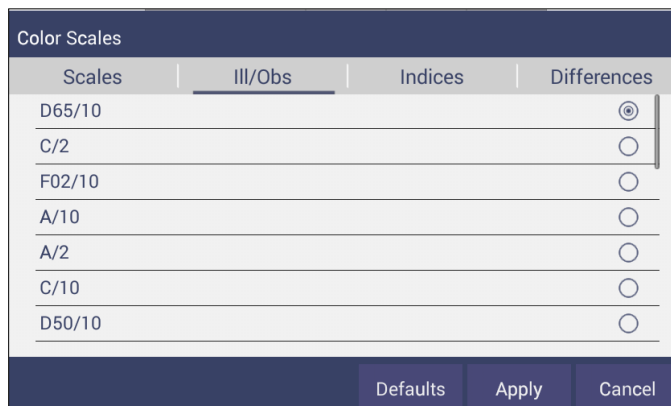


Figure 37. Illuminant/Observer Configuration

- To select indices, go to the **INDICES** tab and check the corresponding box on the right side. Multiple selections are available. To see more choices, the screen can be scrolled. Press **APPLY** to continue. **CUSTOM INDICES** allows user to add reflectance value at a selected wavelength (400-700) as a indice or to customize **HCCI**.



Figure 38. Index Configuration

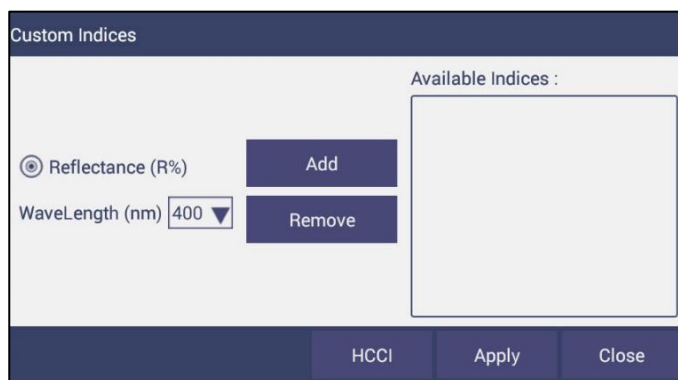


Figure 39. Custom Indices

- To select differences, go to the **DIFFERENCES** tab and check the corresponding box on the right side. Press **APPLY** to continue.

Color Scales			
Scales	III/Obs	Indices	Differences
dE			<input type="checkbox"/>
dE*			<input type="checkbox"/>
dE CMC			<input type="checkbox"/>
dE* 2000			<input type="checkbox"/>

Defaults

Apply

Cancel

Figure 40. Color Measurement Differences

**Table 3. Overview of Color Measurement Parameters for EZ View, Color Data Table, Trend Plot & Color Plot**

<b>Illuminant</b>	<b>Observer</b>	<b>Scales</b>	<b>Differences</b>	<b>Indices</b>	<b>View Options</b>
D65	2/10	CIE Lab	dL*a*b*	457nm Brightness	Pass/Fail <sup>1</sup>
C	2/10	CIE LCh	dL*C*h	Tint E313	Tolerances
F02	2/10	Hunter Lab	dLab	WI E313	Time <sup>3</sup>
D50	2/10	XYZ <sup>1</sup>	dXYZ	Y Bright	Date <sup>3</sup>
D55	2/10	Yxy <sup>1</sup>	dYxy	YI D1925	Trace Range 1 <sup>2</sup>
D75	2/10		dE	YI E313	Trace Range 2 <sup>2</sup>
F07	2/10		dE CMC	Z%	Trace Range 3 <sup>2</sup>
F11	2/10		dE* 2000	SCAA/G	Trace Range 4 <sup>2</sup>
TL84	2/10		dE*	SCAA/C	Auto Range <sup>2</sup>
ULT 30	2/10			BCU	Display: Line <sup>2</sup>
ULT 35	2/10			HCCI	Display: Point <sup>2</sup>
	2/10			Custom <sup>4</sup>	Zoom
				My, Mc, dM, Tint Strength	Average <sup>2</sup>
					Std. Deviation <sup>2</sup>
					Meas per Display <sup>2</sup>

<sup>1</sup>Not Available on Color Plot, <sup>2</sup>Trend Plot Only, <sup>3</sup>Color Data Table Only, Custom Indices<sup>4</sup> means selection of a reflectance value at a selected wavelength

## Workspace > Read Options

### READ OPTIONS > OPTIONS

Shows a dialog box to configure **AVERAGING**, **CONTINUOUS READ INTERVAL**, **AUTO SAVE**, **INDEX BIAS CONFIGURATION**, **SAMPLE NAME**, and **STANDARD NAME**. The Read command performs the operation based on the configured options.

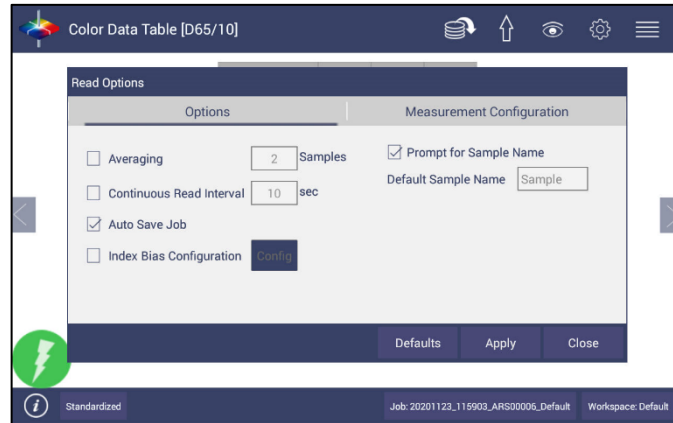


Figure 41. Read Options

### Average

Select the number of readings to average to produce the final measurement. The total number of readings to be averaged can be no less than two. Press **APPLY** to close the screen and press **READ** to initiate Readings.



Figure 42. Reading and Averaging

Once the **READ** button is pressed, the instrument will display a unique dialog box to **READ AND AVERAGE** the readings. The second reading is taken using the dialog box button, **READ**. Once all the readings are taken, press **AVERAGE** to obtain the results. Average and Continuous Read are mutually exclusive.

### Continuous Read Interval

This feature performs measurements continuously. In **CONTINUOUS READ** mode, measurements are initiated and stopped using the **READ** Button. The minimum value of the

Read interval is 3 seconds and it will read as fast as it can update. When in **CONTINUOUS READ** mode, the Read Button is enhanced with a checkmark.

When taking measurements, the Read button is greyed out. When waiting to take the next measurement, the Read button turns green.



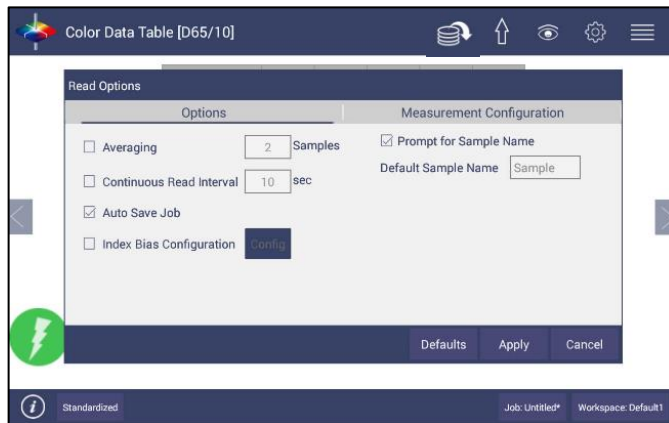
Name	L*	a*	b*	Distance (mm)	Height (mm)
Blue Standard	29.36	10.73	-27.85	83.6	5.4
Sample13	29.70	10.59	-27.59	82.8	6.2
Sample12	30.18	10.48	-27.43	82.9	6.2
Sample11	29.48	10.67	-27.74	82.8	6.2
Sample10	29.78	10.58	-27.60	82.8	6.3
Sample9	30.04	10.53	-27.52	83.0	6.1
Sample8	29.37	10.69	-27.78	82.7	6.4
Sample7	29.94	10.55	-27.53	82.8	6.3
Sample6	29.91	10.57	-27.60	83.1	5.9
Sample5	29.39	10.70	-27.79	83.1	6.0
Sample4	30.02	10.52	-27.49	82.8	6.3
Sample3	29.84	10.60	-27.63	83.2	5.9
Sample2	29.67	10.62	-27.66	82.7	6.4
Sample1	29.36	10.73	-27.85	83.6	5.4

Figure 43. Continuous Read

To stop the Continuous Read, press the **READ** button when the button is green.

### Auto Save Job

This selection will automatically save a job. Once this feature is selected, a dialog box will be displayed to name the job. If there is no name for a job yet, the file name will default to date, time, instrument and workspace.



Read Options

Options

☐ Averaging  Samples

☐ Continuous Read Interval  sec

☒ Auto Save Job

☐ Index Bias Configuration

Measurement Configuration

☒ Prompt for Sample Name

Default Sample Name

Figure 44. Auto Save Job

### Index Bias Correction

This option allows the user to input a custom slope and intercept correction for indices. The user can select any Index from the list of applicable indices and input the desired **GAIN** and **BIAS** values. After selecting the required Indices, select the **APPLY** button to save the selected Indices values and update the Views accordingly. The Bias-corrected Indices will be marked with \* (e.g.: HCCI \*) in the respective view display.

To calculate the slope and bias correction, read a series of samples around the target values of interest. Three methods can be used to provide corrected values:

1. **ONE STANDARD DATA POINT:** In this case, the single data point is compared to the expected value. The Gain remains at 1.0 and the Bias is corrected:

$$\text{BIAS} = \text{EXPECTED VALUE} - \text{MEASURED VALUE}$$

2. **TWO DATA POINTS:** In this case, the two readings are compared to the expected values.

$$\text{BIAS CORRECTION} = \text{EXPECTED VALUE 1} - (\text{MEASURED VALUE 1} * \text{GAIN})$$

$$\text{GAIN CORRECTION} = (\text{EXPECTED VALUE 1} - \text{EXPECTED VALUE 2}) / (\text{MEASURED VALUE 1} - \text{MEASURED VALUE 2})$$

3. **LINEAR REGRESSION:** Create a  $y=mx + b$  relationship comparing actual readings to target values, where target values is on the Y-axis and actual readings are on the x-axis. Enter the slope correction under Gain and the intercept correction under Bias.

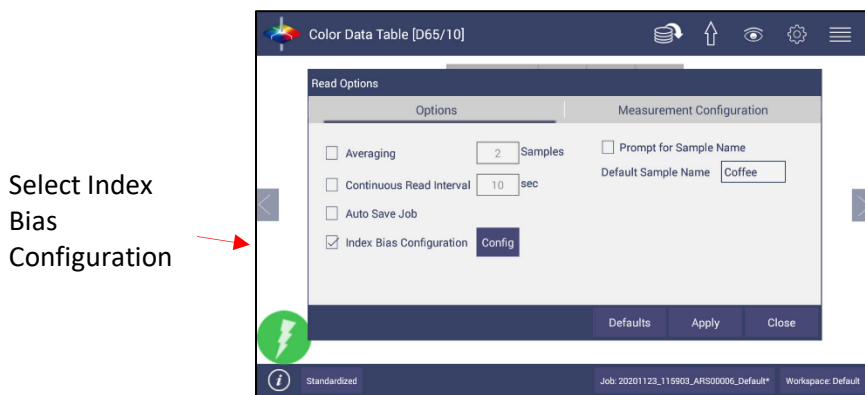


Figure 45. Slope & Bias Correction



Figure 46. Input Gain & Bias

The indices with bias correction include: 457nm Brightness, BCU, HCCI, SCAA, Tint E313, WI E313, Y Brightness, YI D195, YI E313, Z%, and custom indices.

### Prompt For Sample/Standard Name

Select this feature to input the Sample (or Standard) name manually during the measurement cycle so that the Sample measurement will be inserted with the specified name. If this option is not selected, the Samples will be inserted with the specified default sample name suffixed with the auto incremented index number. Press **APPLY** when done.

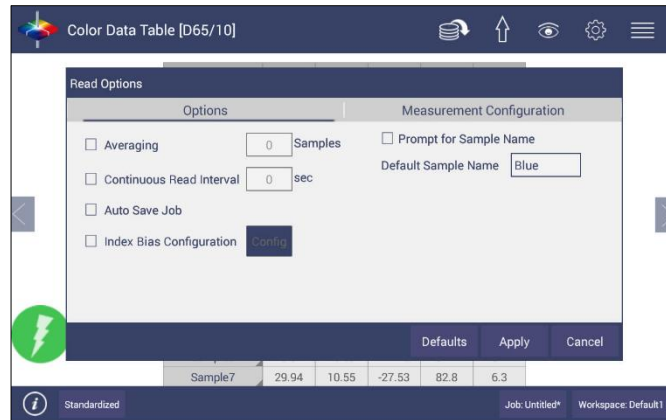


Figure 47. Prompt for Sample (Standard) Name

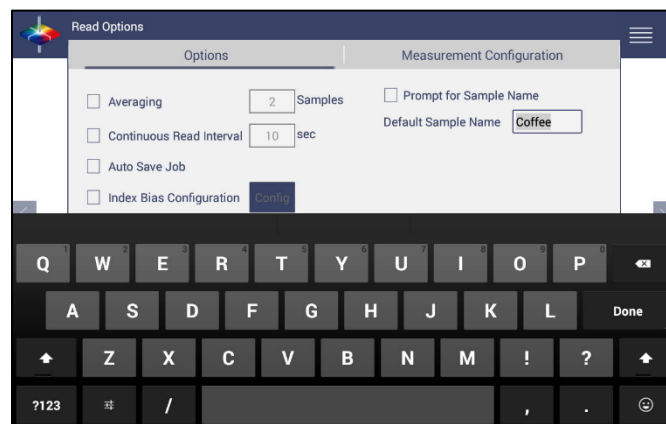


Figure 48. Input Sample Name

## READ OPTIONS > MEASUREMENT CONFIGURATION

Enables the motion of the turntable, selects the height of the measurement and measurement time.

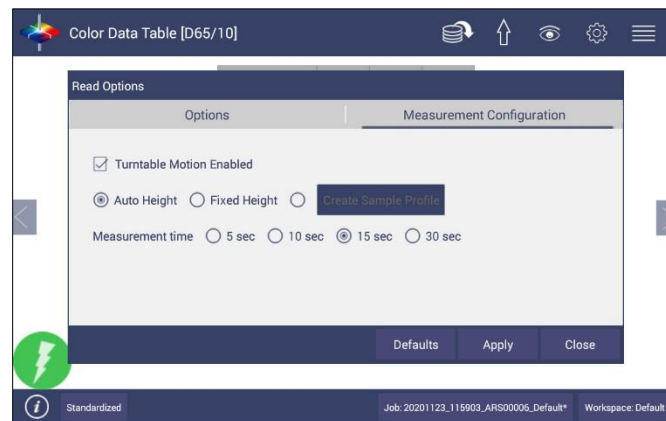


Figure 49. Measurement Configuration

Select **TURNTABLE MOTION** to enable rotation.

When **AUTO HEIGHT** is selected as a default, the sensor head will adjust its position to read samples automatically for each sample measurement based on the sample height detected by sensor.



**FIXED HEIGHT** will enable the user to select a height and move sensor head to a fixed location. No matter what sample height is measured by sensor, the sample height that user entered here will be used to do color calculation of each samples. This is usually applied when sensor could not detect sample height very well, e.g. sample has high absorption at 880mm.

The **CREATE SAMPLE PROFILE** button will allow the Aeros to look at the specimen and select the optimum fixed distance from the turntable. Each sample measurement under **CREATE SAMPLE PROFILE** mode will use the height detected by sensor for color calculation. If the detected height is out of preferred sample range (+/-0.5in), it will prompt the error message instead of moving sensor head.

When **CREATE SAMPLE PROFILE** is pressed, the Sensor will move to the Top position.

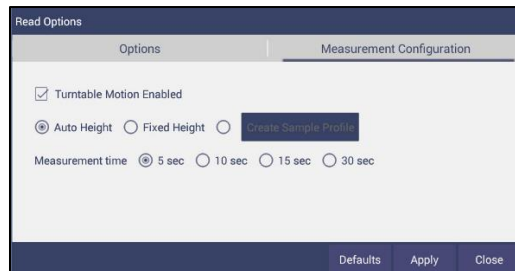


Figure 50. Creating a Sample Profile

Place sample on the turntable and press **OK**.

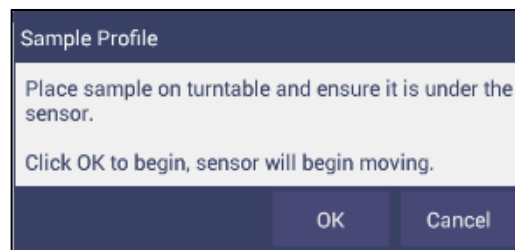


Figure 51. Place sample on Turntable

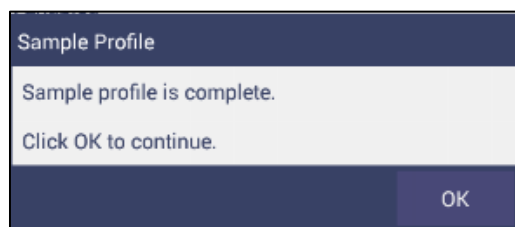


Figure 52. Sample Profile Complete

When profile is complete, press **OK** to continue. The sample height will be shown next to the **CREATE SAMPLE PROFILE** button.

The **MEASUREMENT TIME** is the amount of time used to average the readings together. The longer the time, the more the averaging.

## Workspace > Standard And Tolerances

This command can be used to specify the type of **STANDARD AND TOLERANCES**. Standards can be one of four types: **RETRIEVED FROM DATABASE**, **PHYSICAL**, **AD HOC** and **NUMERIC**. A standard that is retrieved from Database has been previously stored. A physical standard is one that has been read as a sample and made into a standard. An Ad Hoc (or working) standard is one that is read at the beginning of a job and becomes the standard for a run. In this case, auto tolerances are recommended. A numeric standard is one that has color measurement values but is not present and cannot be read. A subset of this is the Hitch Standard. All types of standards can apply Hitch.

Figure 53. Tolerances Configuration

- Standard is saved with standard name, standard color value and standard tolerances to the database by pressing the button at the bottom of the screen. When there is a standard applied in a job, you must delete it first if you want to change the standard type (Recall. Physical/Adhoc and Numeric). You can click the **CALC AUTO TOLERANCES** here to calculate the tolerances of standards.
- **TOLERANCES** can be entered manually for a selected scale, index and difference.

Figure 54. Enter Tolerances



Figure 55. Index Selection and Tolerances

- Tolerances will be displayed on the measurement screen if enabled under the **VIEW OPTIONS** for the **COLOR DATA** and the **COLOR PLOT** Screens.

Color Data Table [D65/10]										
Name	L*	a*	b*	Distance (mm)	Height (mm)	Turntable	BCU	dBCU	HCCI	dHCCI
Standard_201805 03164247	19.47	10.40	13.32	83.04	20.40	On	0.19		6.18	46.1
+ Tolerance	0.89	1.04	1.26	0	0	0	1.2	0	8.5	0
- Tolerance	0.89	1.05	1.25	0	0	0	1.2	0	8.5	0
Coffee58	29.52	4.82	3.32	82.90	20.54	On	1.27	1.08	8.37	2.20
Coffee57	29.51	4.81	3.32	82.34	21.10	On	1.27	1.08	8.37	2.19
Coffee56	29.51	4.82	3.31	82.35	21.09	On	1.27	1.08	8.37	2.19
Coffee5	29.47	4.83	3.32	82.35	21.09	On	1.27	1.07	8.35	2.17
Coffee4	29.34	4.87	3.36	82.67	20.78	On	1.26	1.06	8.30	2.13
Coffee3	27.36	6.72	5.63	81.79	21.65	On	1.06	0.87	8.21	2.04
Coffee2	18.28	9.11	10.95	84.37	19.07	On	0.05	-0.15	5.29	-0.88
Coffee	19.47	10.40	13.32	83.04	20.40	On	0.19	0.00	6.18	0.00

Figure 56. Indices & Tolerances on CDT

- **PASS/FAIL** based on these tolerances can be used on the **EZ VIEW** as well as **COLOR DATA VIEW**.

- HITCH STANDARDIZATION
  - **Hitch Standardization** is a process by which two or more instruments of similar design can be made to read the same color values on a group of specimens. This process is very useful in expanding the communications of color around the world or between vendor and customer.
  - The process of Hitch Standardization (also known as transfer standardization) involves assigning one instrument to be the reference, or master, unit and mathematically adjusting the secondary, or slave, unit(s) to read the “same” values. In this way, two or more instruments can be hitched together. Hitching a secondary unit to a reference instrument requires that a specimen be read on both units and the values compared and adjusted accordingly. This specimen, known as the hitch standard, is first read on the reference instrument and its values recorded as spectral data or colorimetric (tristimulus) data. The hitch standard is then physically moved to the secondary instrument where it is reread and the values from the reference unit are input into the secondary instrument's processor.
  - Steps for Hitch Standardization:
    1. **READ** a standard.
    2. Go to **WORKSPACE > STANDARD AND TOLERANCES** and select **HITCH**.
    3. The Standard is displayed under **AS READ**. Enter the **TARGET VALUES**.
    4. Check the **APPLY HITCH BOX** and press **OK**.

**Hitch Standard**

<b>Hitch Method</b>		<b>Hitch Type</b>	
<input checked="" type="radio"/> Tristimulus Hitch		<input checked="" type="radio"/> Additive <input type="radio"/> Ratio	
<b>Colorimetric Conditions</b>			
Illuminant/Observer	D65/10		
Scale	CIELAB		
<b>Readings</b>			
	L*	a*	b*
As Read	94.86	-0.92	2.06
Target	<input type="text" value="94"/>	<input type="text" value="1.0"/>	<input type="text" value="2.0"/>
<input checked="" type="checkbox"/> Apply Hitch			
		OK	Cancel

Figure 57. Hitch Standardization

**Table 4. Hitch Standardization By Additive or Ratio Application**

	Hitch Standard		Calculate	Calculate		Apply Hitch	Apply Hitch	
			Additive	Ratio		Additive	Ratio	
	Target	Measured	Hitch	Hitch		New Read	New Read	New Read
X	80.27	78.29	= +1.98	=*1.025	70.84	72.82	72.63	
Y	81.00	79.21	= + 1.79	=*1.022	72.25	74.04	73.88	
Z	50.71	47.76	= +2.95	=*1.061	46.07	49.02	48.91	
			Hitch Factor	Hitch Factor		Hitch Calc	Hitch Calc	
			1.98	1.025290586		70.84+1.98	=72.84*1.025	
			1.79	1.022598156		72.25+1.79	=72.25*1.022	
			2.95	1.061767169		46.07+2.95	=46.07*1.061	

## AUTOTOLERANCES SETTING

- Using Tab 4, AutoTolerances are calculated for a Color Scale using CMC. The default values of L:C – 2:1 with auto correction factor = 0.75 and commercial factor = 1. However, these ratios can be modified as needed.



**Figure 58. AutoTolerance Configuration**

**Note: If AutoTolerances are selected, the user cannot manually enter tolerances.**



**Figure 59. Difference Tolerance Configuration**

## TOLERANCES

- Tolerances can be entered for **SCALES**, **INDICES** and **DIFFERENCES**.



Figure 60. Indices Tolerance Configuration

## Workspace > Views

This option can be used to select the views to be presented in the application. Simply check on the box of the screen needed. Press **APPLY** to save one or all of the screens. The default screen is the **COLOR DATA TABLE**. To navigate between screens once the selections have been applied, use the **VIEW FLIPPERS** on the left and right of the screen.

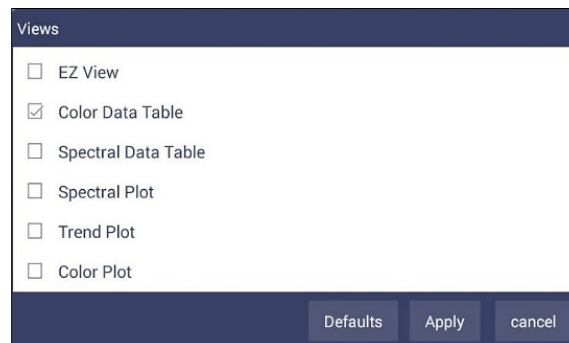


Figure 61. Workspace Views

## Workspace > New Workspace

- This allows the user to create a new workspace. A warning is shown to make sure that the current Job is saved. All settings in the previous workspace will be loaded in the new workspace.

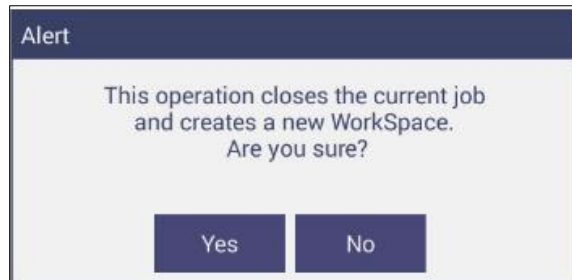


Figure 62. New Workspace

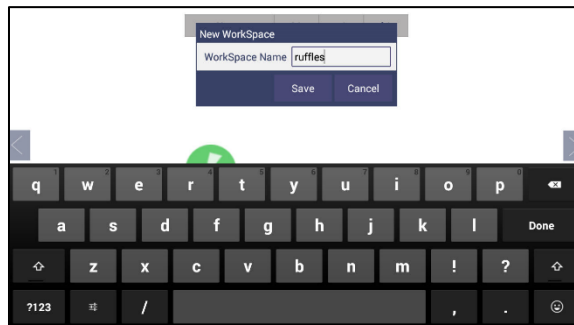


Figure 63. Name the New Workspace

## System Settings: Standardization

From the **TOOLS** menu select **STANDARDIZATION**. You can also press the Standardization key in the Status bar as a shortcut. The sensor will move to the top to begin.

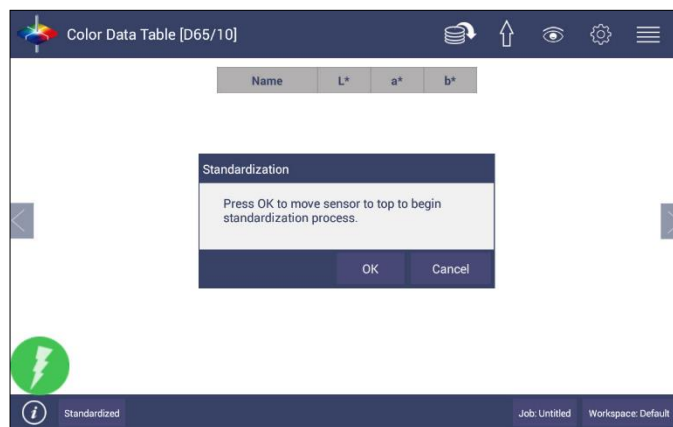


Figure 64. Begin Standardization

- **READ BLACK GLASS:** Attach the standardization box to the sensor. Then attach the black glass and press **READ** to continue.

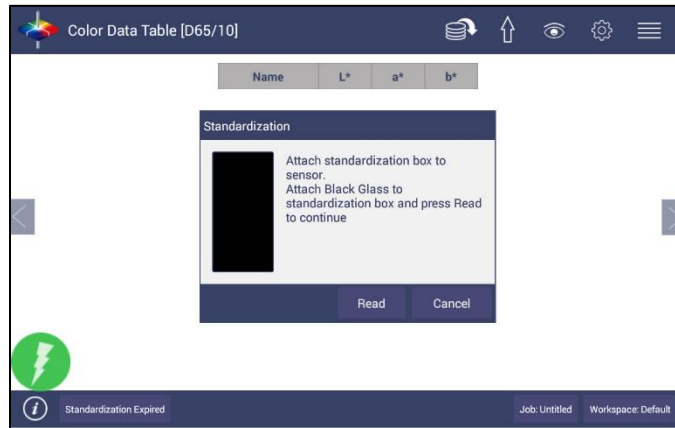


Figure 65. Attach Standardization Box with Black Glass

- **READ WHITE TILE:** Remove the black glass and attach the calibrated white tile to the standardization box. Press **READ** to continue.

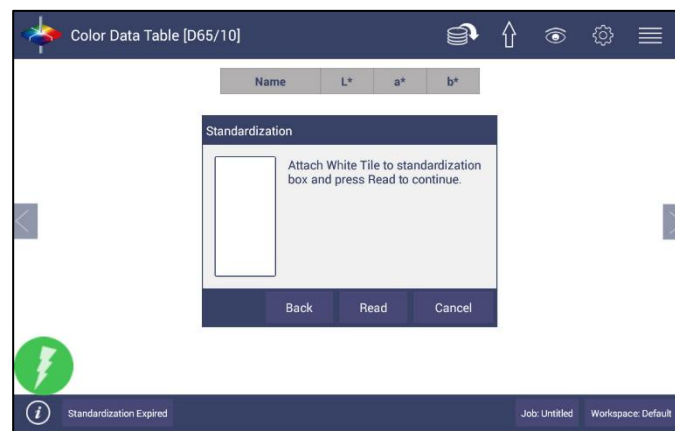


Figure 66. Change to White Tile

- If the user has selected the **GREEN TILE READING DURING STANDARDIZATION** under **WORKSPACE > PREFERENCES**, the user will be prompted to read the green tile too. The target values are the ones on the back of the green tile.



Figure 67. Green Tile Reading



- Remove the calibration box when standardization is complete. The instrument is ready to read samples.

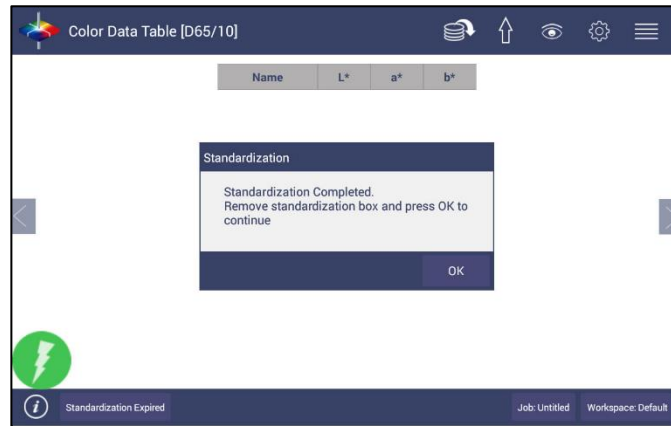


Figure 68. Standardization is Complete.

### System Settings > Diagnostics

The performance diagnostics are **REPEATABILITY** and a **GREEN TILE TEST**.

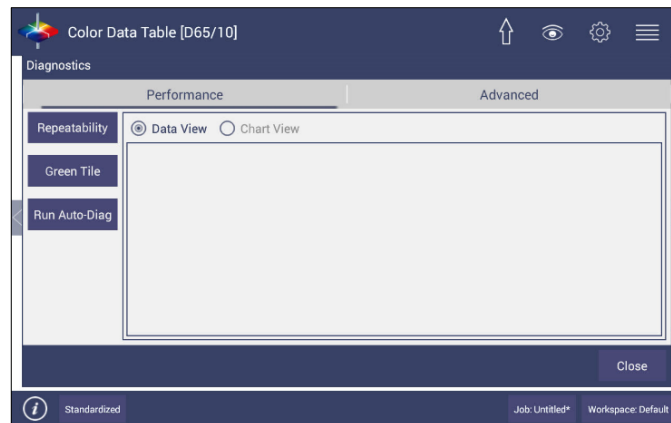


Figure 69. Performance Diagnostics Menu

### TESTING THE AEROS FOR COLORIMETRIC REPEATABILITY

The Repeatability Test assesses how consistently the instrument can measure color. To begin the sample pan should be free of samples and obstacles. Click **NEW** button to start the repeatability test and the user is prompted to press **OK** to standardize. All sample readings must be within the tolerances to pass the test.



Figure 70. Set up for Colorimetric Repeatability.

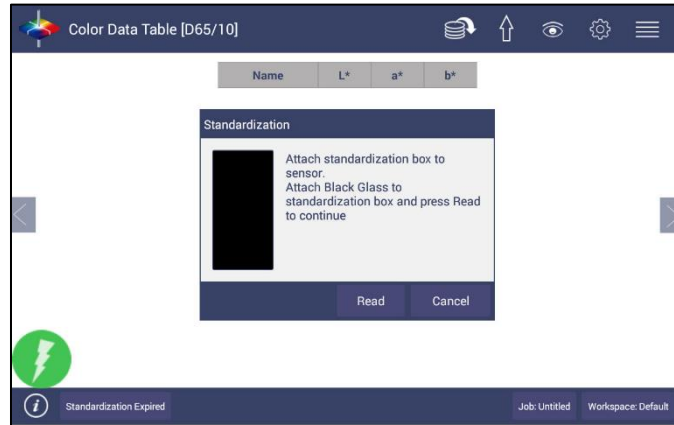


Figure 71. Standardize the Instrument.

- Read the black glass and then the white tile.

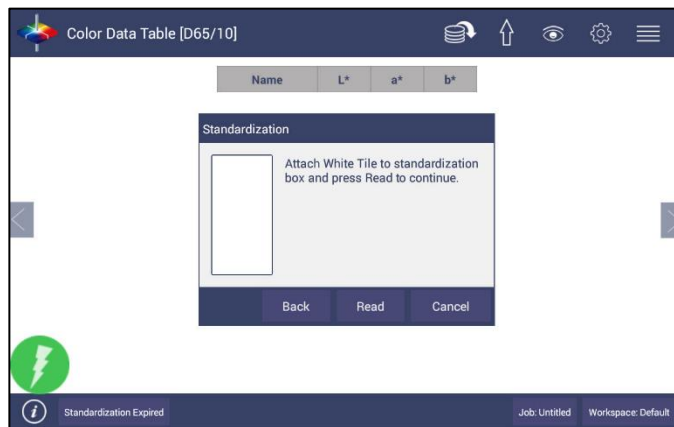


Figure 72. Read White Tile

## User's Manual for Aeros and EasyMatch Essentials v 1.2

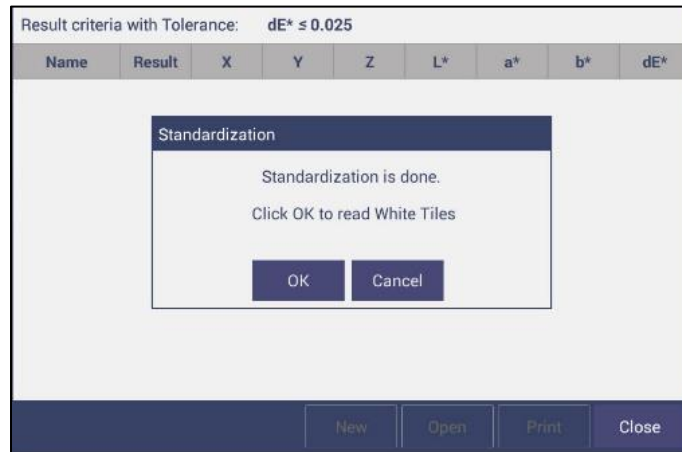


Figure 73. Begin Repeatability Readings on White Tile

- Leave the white tile at the port and press **OK** to initiate the repeatability readings. The white tile is read 30 times and the individual results reported. A table of the difference between the current reading and Standard is shown after every measurement. By comparing each reading to the tolerance, a Pass/Fail assessment is shown.

Result criteria with Tolerance: $dE^* \leq 0.025$								
Name	Result	X	Y	Z	L*	a*	b*	dE*
Standard		81.48	86.62	91.41	94.58	-1.24	1.05	
Sample1	Pass	81.50	86.63	91.43	94.58	-1.24	1.05	0.01
Sample2	Pass	81.51	86.65	91.44	94.59	-1.24	1.05	0.01
Sample3	Pass	81.52	86.66	91.45	94.59	-1.24	1.05	0.02
Sample4	Pass	81.53	86.66	91.46	94.59	-1.24	1.05	0.02
Sample5	Pass	81.53	86.67	91.47	94.60	-1.24	1.05	0.02

Figure 74. Repeatability Readings with Pass/Fail

When all 30 readings have been made, the final test result is shown and saved automatically. To print the results, press the **PRINT** button or click to **OPEN THE FILE** and then **PRINT**.

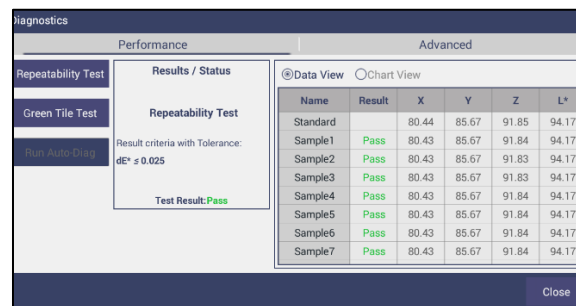


Figure 75. Diagnostics Repeatability Test Results

READING THE GREEN TILE

This test requires entry of the target values for the Green Tile.

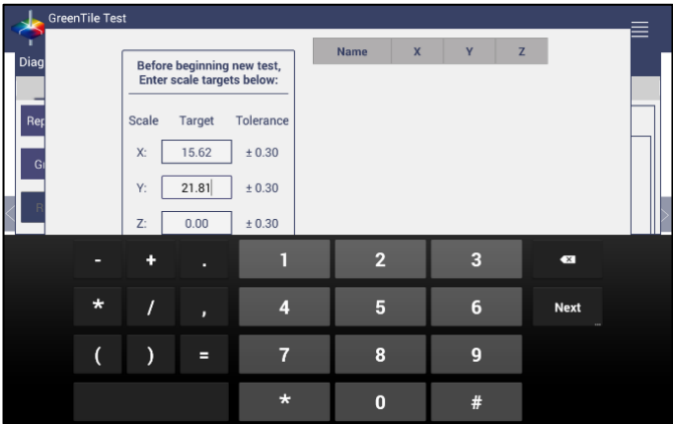


Figure 76. Input Target Values for Green Tile

Once the target values have been entered, press **NEXT**. Standardize the instrument and attach the Green Tile. Press **OK** to continue.

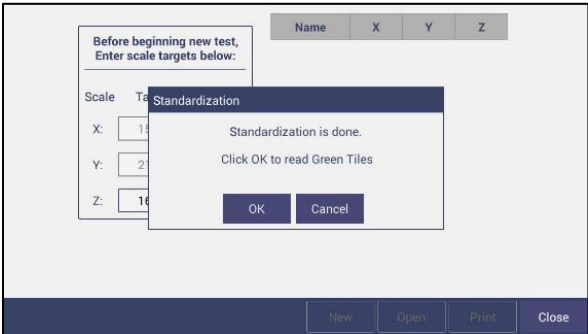


Figure 77. Attach the Green Tile

Ten readings are taken and compared to the tolerance as an average. This test is then automatically saved and can be printed by pressing **PRINT**.



Figure 78. Green Tile Readings

## RUN AUTO DIAGNOSTICS

Auto Diagnostics is for use by the service department at HunterLab and not recommended for customer use. It runs all tests and detailed readings for short term repeatability and green tile measurements are available by opening the CSV file.

## ADVANCED TESTS

Advanced Tests are primarily for use by HunterLab's Service Department. However, this menu supports the upload of Printer Drivers, Parking of the sensor for Shipping, and remote support setting.

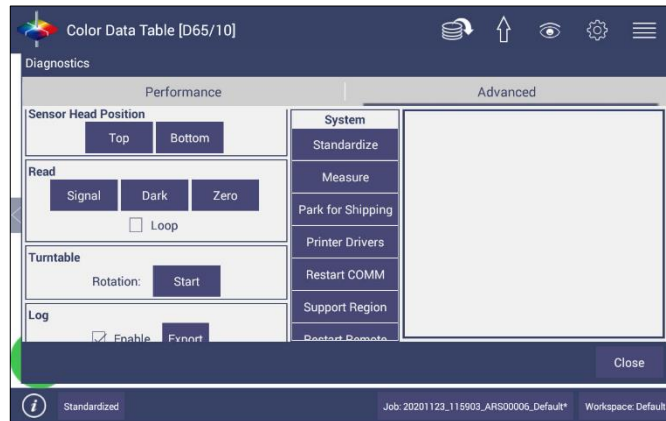


Figure 79. Advanced Menu

- **SENSOR HEAD POSITION:** To test the movement of the sensor head up or down. To prepare for shipping, use the **PARK FOR SHIPPING** command under System.
- **READ SIGNAL, DARK, ZERO:** This function will enable the Service Department to determine proper performance of the instrument. These tests can be performed as a single measurement or a continuous loop. The **SIGNAL DATA** for the white tile are shown in the next figure.
- The **TURNTABLE** can be tested next by pressing **START**. Press again to stop the turntable.
- **ENABLE LOG:** Once check enabled, this feature records the instrument actions for tracking purposes. When complete the user returns to this screen and exports the data to a thumb drive. Once the data export is completed the data size becomes '0' again.
- **STANDARDIZE:** Initiates standardization from the Diagnostics screen.
- **MEASURE:** Initiates the measurement of a sample from the Diagnostics screen. The reflectance spectra data will be showed in this dialog.
- **PARK FOR SHIPPING:** Move sensor down to secures the optics for transportation.

- **PRINTER DRIVER:** To upload a new print driver or apk file, download the apk file needed from the internet onto a flash drive. Place the flash drive into the instrument (front port) so that it can access the list of apk files. Select the driver to upload and press **OK**.

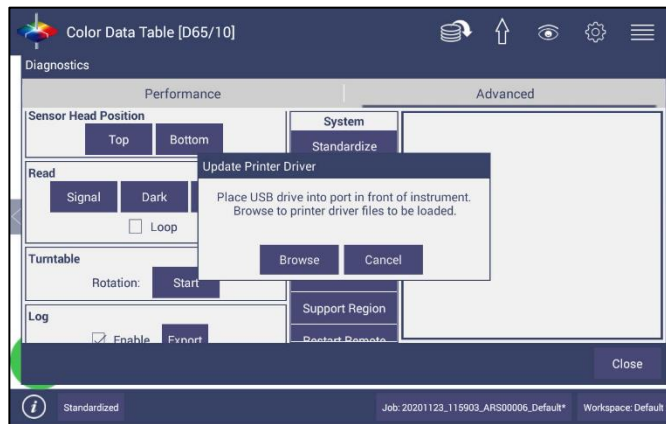
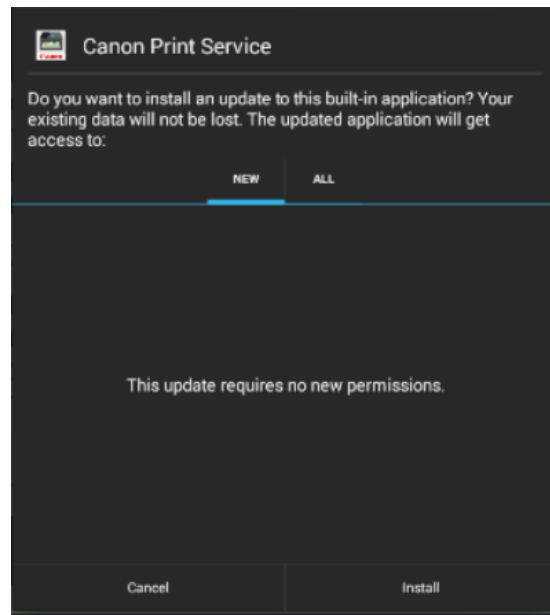


Figure 80. Insert USB with Printer Driver

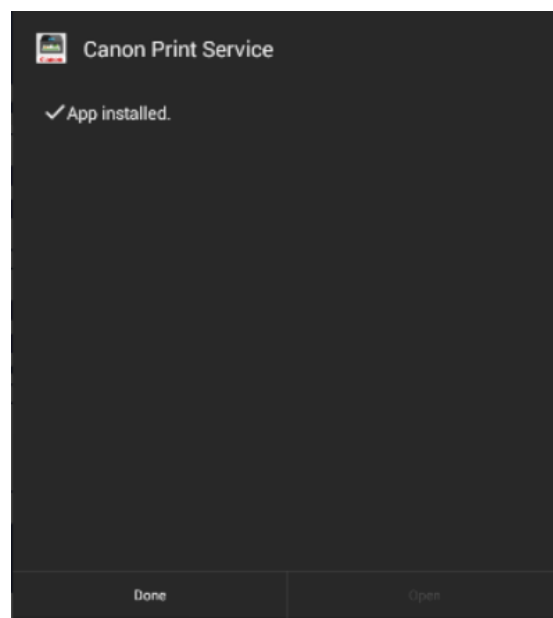


Figure 81. Select Printer Driver



*Figure 82. Updating Printer Drivers*

- The Aeros will install the new printer driver and it will be then available to use.



*Figure 83. Printer Driver Installed*

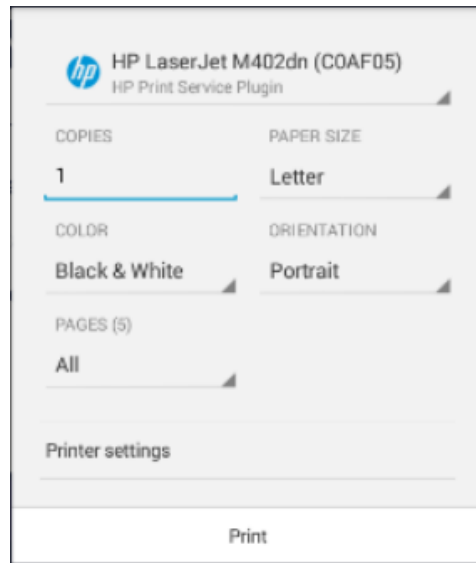


Figure 84. Printer Page

- **RESTART COMM** can be used to reset the ethernet communications for EasyMatch QC.
  - SUPPORT REGION

**Note: Your instrument must be connected to the internet.**

- a. Select **SUPPORT REGION**. A dialog is displayed with three options for region selection. Select **USA**, **EUROPE** or **ASIA PACIFIC** and the URL string is modified accordingly. Press **OK** to continue.

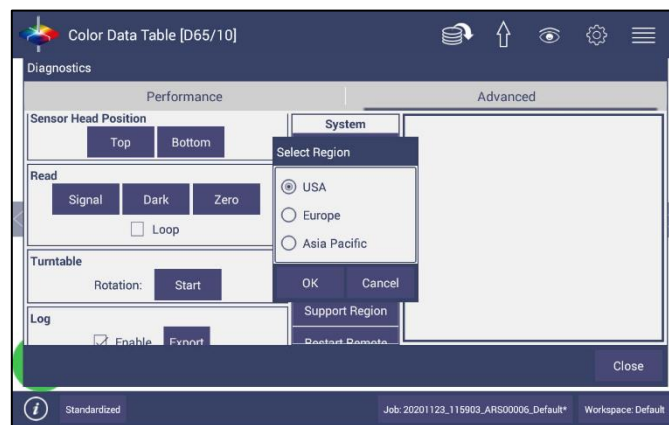


Figure 85. Select Region

- b. Select **RESTART SUPPORT** to view the Netops Host Screen. From the top right side of the Netops Host screen, select the **3 DOTS**. From the list menu, select **RESTART**.



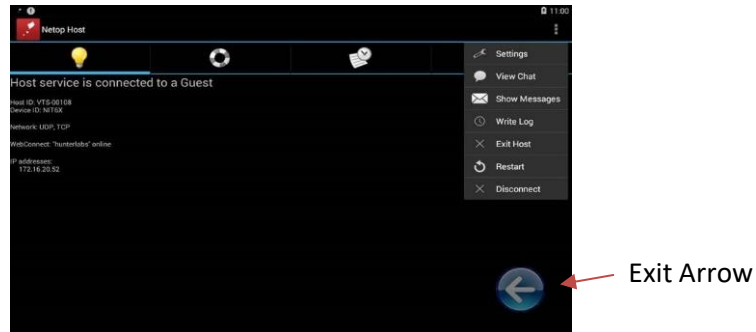


Figure 86. Remote Access Screen

- c. To ensure that your application is successfully restarted, make sure that you see the message **WebConnect: 'HUNTERLABS' ONLINE**. If this message does not appear, please contact our support team. To exit press the arrow at the bottom of the screen.

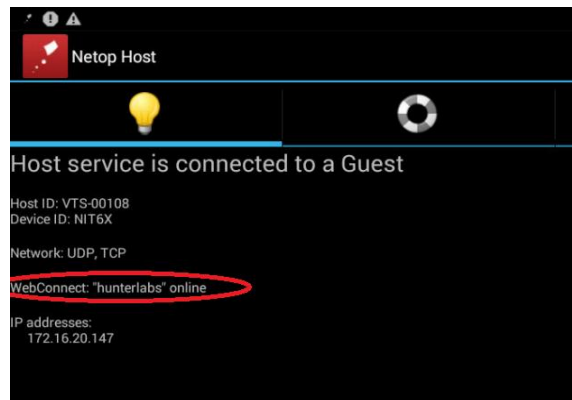


Figure 87. WebConnect to HunterLab

## System Settings > Preferences

### PREFERENCES > GENERAL

This allows the user to set preferences to: Load the last used workspace and job, Set standardization time interval, Set screen brightness and date/time, Enable novice tooltip, Enable application security, Use last login credentials, Configure and enable network data export, and Configure network settings.

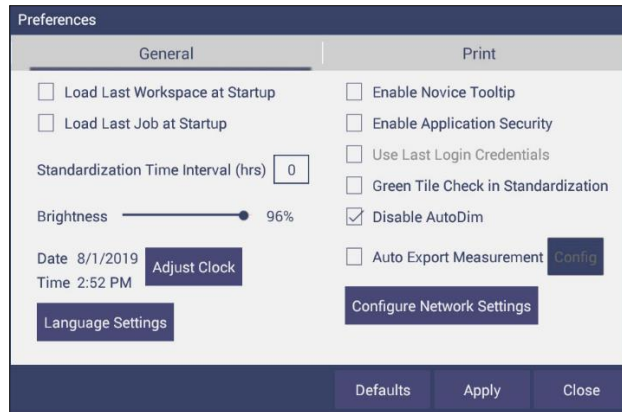


Figure 88. System Settings > Preferences > General Page

- To **LOAD THE LAST WORKSPACE AT STARTUP** check this box and press **APPLY**.
- To **LOAD THE LAST JOB AT STARTUP**, check this box and press **APPLY**.
- The **STANDARDIZATION TIME INTERVAL** is a useful reminder to restandardize. Press **APPLY** to set the new interval. When the time has lapsed, a prompt to restandardize will be displayed before measurements can be taken.
- Set the screen **BRIGHTNESS** using a sliding scale and press **APPLY**.
- Set the **DATE** and **TIME**, time zone, and format use the **ADJUST CLOCK** feature.
- **LANGUAGE** can be selected here along with a keyboard change. Languages supported include English, Chinese, Japanese and German.

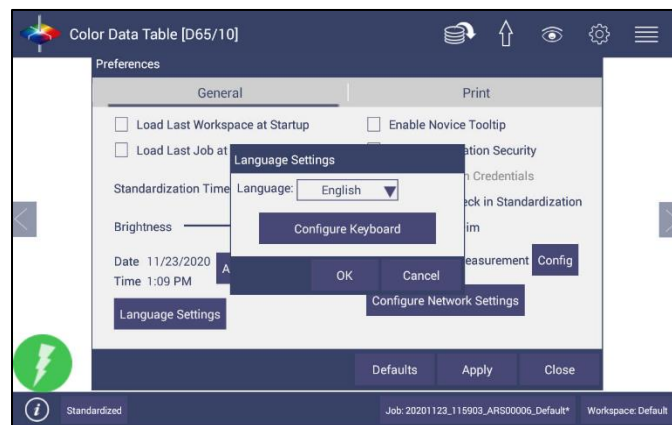


Figure 89. Language & Keyboard Selection

- **ENABLE NOVICE TOOLTIPS** by checking on the box. Once enabled, on screen tips are displayed for 3 seconds. To display again, roll over the **LIGHTBULB ICON** on the lower right part of the screen.

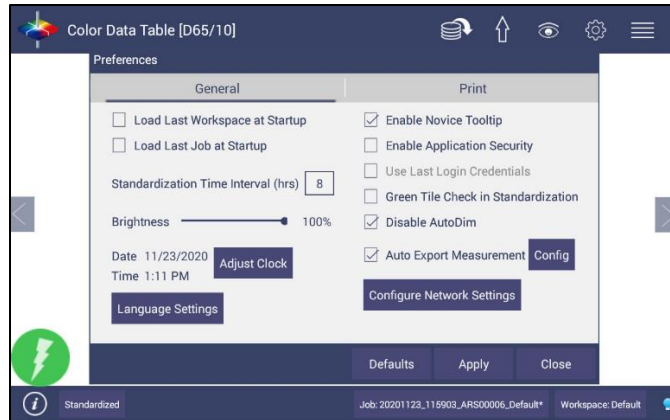


Figure 90. Enable Novice Tool Tips

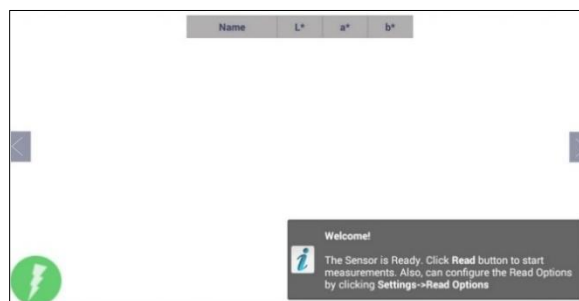


Figure 91. Example of Novice Tool Tip

- **ENABLE APPLICATION SECURITY.** This selection is available after the User Manager has been set up. Please refer to the **SYSTEM SETTINGS > USER MANAGER** for more information.
  - When this is selected, the application will require valid login credentials at startup. On successful login, the user name will be shown in the status bar. If **USE LAST LOGIN CREDENTIALS** is checked, the user will be automatically logged in on subsequent startups.
- **GREEN TILE CHECK** adds the green tile reading to the standardization process.
- **AUTO DIM** darkens the screen after Essentials idle 15min. To disable, check the box **DISABLE AUTO DIM**.
- To **CONFIGURE AND ENABLE THE NETWORK DATA EXPORT** and **NETWORK SETTINGS**, please connect the Aeros to a computer as described in **SPECIAL FUNCTIONS** (Chapter 7). In Network settings, one can use an Ethernet cable or setup a Wi-Fi Connection.

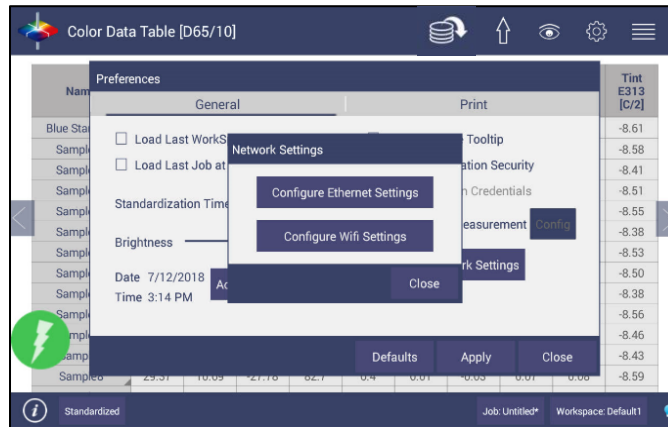


Figure 92. Network Settings

## PREFERENCES > PRINT

This page allows the user to configure:

- The **READINGS** to print
- The option to **PREVIEW** before print.
- **PRINT REPORT TITLE** and **LOGO**. To apply a logo, import the logo first to the HunterLab folder.
- Orientation of the report (**Portrait** or **Landscape**) orientation.
- To save changes, press **APPLY**.

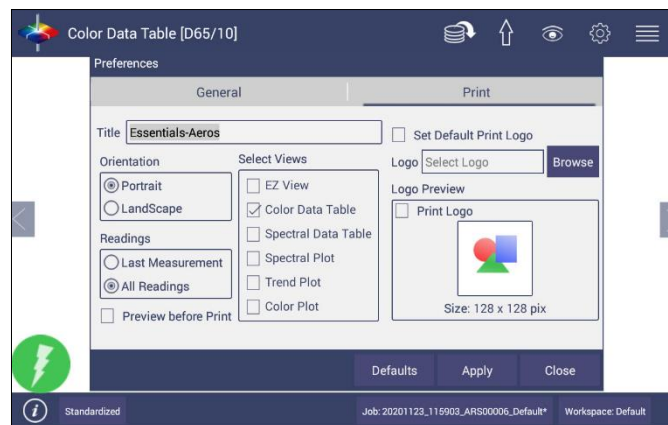


Figure 93. System Settings> Preferences> Configure Print Page

## System Settings > User Manager

Security can be enabled on the Aeros to ensure that operators cannot modify/delete folders or files and limit their functionality. An administrator is identified to set up the users/groups with selected privileges.

- To begin, go to **WORKSPACE > USER MANAGER** to set up **CREATE ADMINISTRATIVE GROUPS** first followed by **CREATE USER GROUPS**.

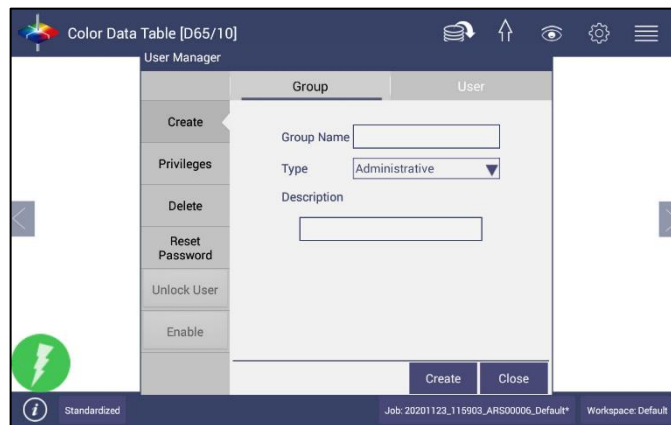


Figure 94. Create a Group.

- Once the groups have been established, then individual users with **USER NAMES** and **PASSWORDS** can be setup for both Administrator and User Groups.

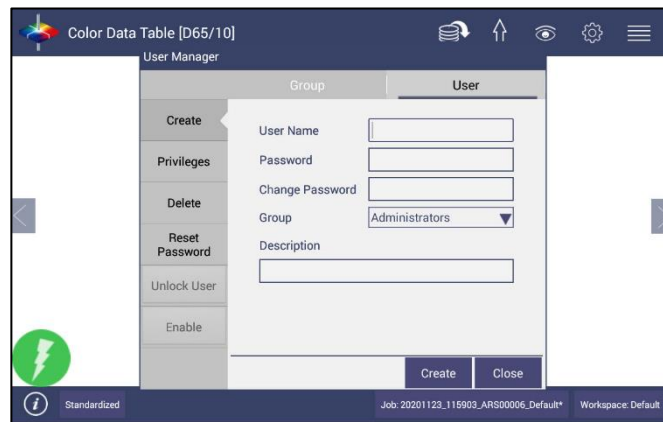


Figure 95. Setup Administrative & General Users

- Users in Administrative Groups have all features enabled. For Users in User Groups, Privileges can be setup as shown below. Press **UPDATE PROFILE** to complete.

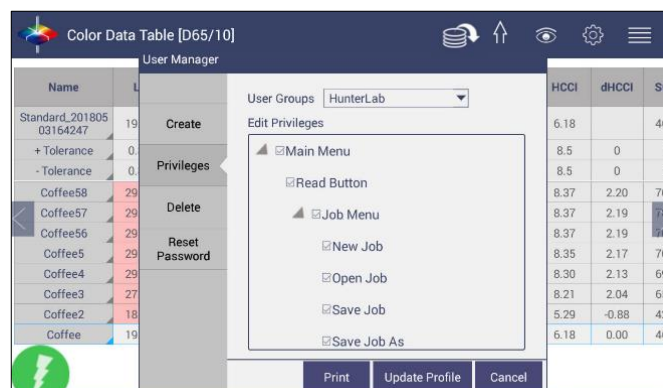


Figure 96. User Privileges

- If a printer is attached, you can **PRINT** a list of Privileges selected.

- To complete enabling security, go to **WORKSPACE > PREFERENCES** and enable security on the right side.

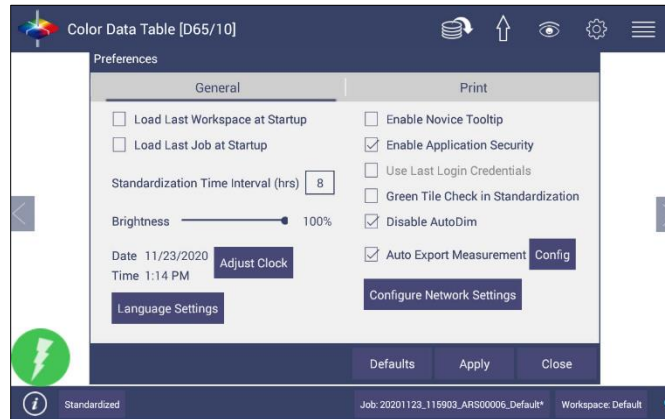


Figure 97. Enabling Security

- After enabling security, each user must enter a name and password when logging into the Aeros. For convenience, the user can check the box under **WORKSPACE > PREFERENCES > GENERAL** to use the **LAST LOGIN CREDENTIALS**.



Figure 98. Login Credentials

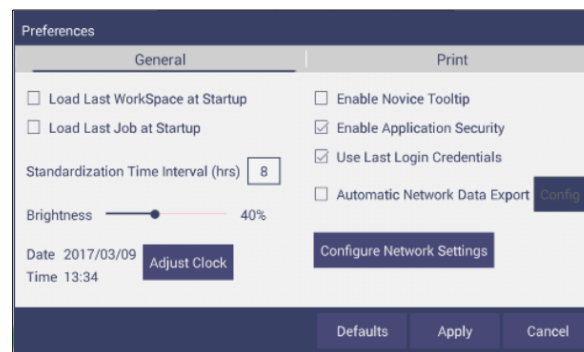
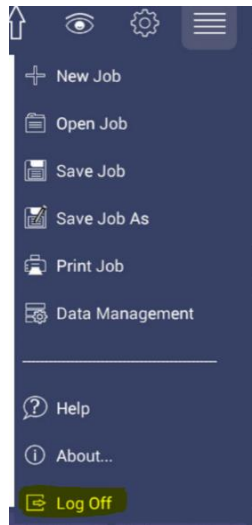


Figure 99. Enable Last Login Credentials

- If needed, the administrative user can delete groups / users and reset passwords of all Groups & Users.

## User's Manual for Aeros and EasyMatch Essentials v 1.2

- After **ENABLE APPLICATION SECURITY** is checked, the Logoff feature will be listed in Job menu. User can click **LOGOFF** to exit Essentials.



*Figure 100. Log Off*

## Toolbar: Options (Views)

### Views Icon



**VIEWS** are selected using a dialog box under **WORKSPACE**. Simply check on the box of the screen needed. Press **APPLY** to save one or all screens. The default screen is the Color Data Table. To navigate between screens once the selections have been applied, use the **VIEW FLIPPERS** on the left and right of the screen.

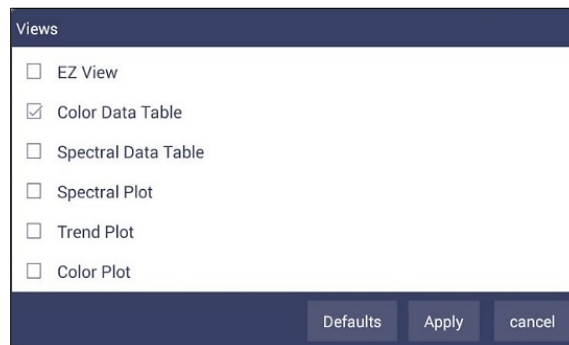


Figure 101. Workspace > select Views.

Once the views have been selected, then **VIEW OPTIONS** are available to add additional information to the screen. Each screen has a unique set of options associated with it.

### Views > EZ View

This view provides a simple display of **STANDARD** vs. **SAMPLE** and **PASS/FAIL** results.

Name	Standard_20...	Sample
L*	96.54	----
a*	-0.73	----
b*	5.63	----
dE*		----
WI E313 [C/2]	66.15	----

Figure 102. EZ View Display

- **VIEW OPTIONS** includes the selection of **NO COLOR SCALE**, **PASS/FAIL**, **PRECISION** and **FONT SIZE**.



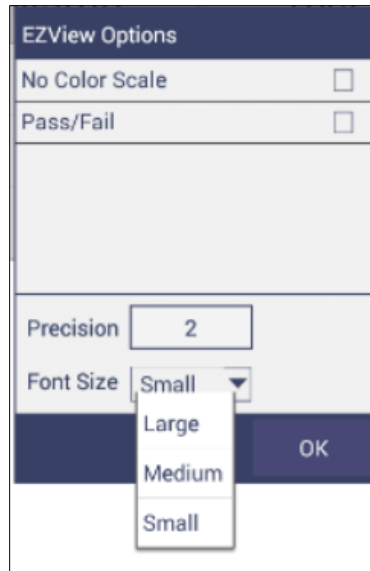


Figure 103. EZ View Options

## Views > Color Data Table

The **COLOR DATA TABLE** view shows **COLOR SCALE**, **COLOR DIFFERENCE**, and **INDEX** data for the **STANDARDS** and **SAMPLES** in the job.

The image shows the 'Color Data Table [D65/10]' display. It has a title bar with a color wheel icon and the text 'Color Data Table [D65/10]'. Below the title bar is a toolbar with icons for refresh, up arrow, eye, settings, and a menu. The main area contains a table with the following data:

Name	L*	a*	b*	dE*	WI E313 [C/2]
Standard_202009 23163447	96.54	-0.73	5.63		66.15

At the bottom of the display, there is a status bar with a green lightning bolt icon, the text 'Standardized', and the job information 'Job: 20201123\_115903\_ARIS00006\_Default\*' and 'Workspace: Default'.

Figure 104. Color Data Display

- Options such as **TOLERANCES**, **DATA ORDER**, **INTERVAL**, **DATE**, **DISTANCE**, **TURNTABLE MOVEMENT**, **HEIGHT**, **TIME**, **USER NAME**, **SENSOR NUMBER** and **PASS/FAIL** can be selected for viewing using the **VIEW OPTIONS**.



Figure 105. Color Data Screen: View Options Needs new screen.

- A long press on the **SAMPLE** can enable the user to make the sample into a Standard, change the name or delete the reading.

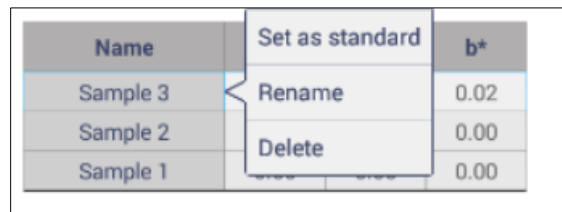


Figure 106. Changing a Sample into a Standard

- To delete a Sample (or Standard), select **DELETE** and then confirm the action.

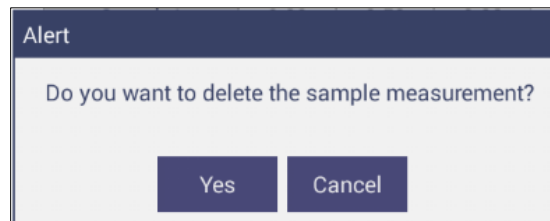


Figure 107. Delete the Sample Measurement

A long press on the **STANDARD** will enable the user to edit or delete the Standard. Edit opens the Standard and Tolerances dialog box. Delete will delete the standard from the current workspace.



Figure 108. Edit Standard Name or Delete the Standard

## Views > Spectral Data Table

The **SPECTRAL DATA TABLE** displays percent reflectance or absorbance values for each selected measurement at the wavelengths being measured.

WaveLength (nm)	400	410	420	430	440	450	460	470	480	490	500	510
Standard_202009_23163447	72.44	75.27	78.47	80.17	82.10	83.67	85.08	86.48	87.45	88.35	89.38	89.93

Figure 109. Spectral Data Table

- Selections include **ABSOLUTE OR DIFFERENCE, REFLECTANCE OR K/S**. Enter the start and stop wavelength, the interval and the precision and press **OK** to continue.

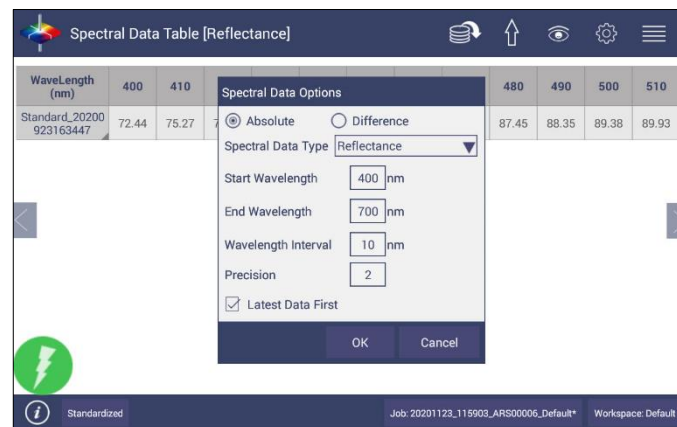


Figure 110. Spectral Data Table Options

## Views > Spectral Plot

- This view provides a plot of wavelength vs. spectral measurement parameter.



Figure 111. Spectral Plot View

- Press **CLEAR ALL** to remove all the samples to display. Press **SELECT ALL** to enable display of all samples. To select an individual sample, click on the respective Sample in the list located on the right edge of the screen.
- The Samples List is paginated. Click the **LEFT** and **RIGHT ARROW** buttons below the samples list to navigate between pages.
- Press and hold on the left/right page number arrows under the sample list to show a small dialog box. This dialog allows you to select the number of records per page to display and the page number to display.

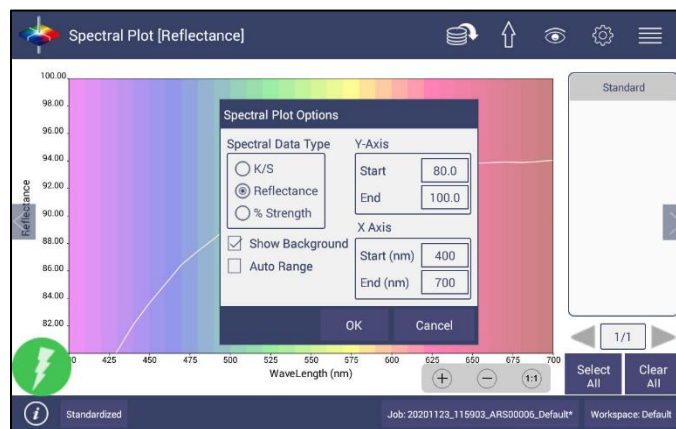


Figure 112. Spectral Plot Options

- Spectral Plot Options:** There are three choices for spectral plot options:
  - K/S** – mathematical calculation based on reflectance and determined at each wavelength for the standard and sample.
  - REFLECTANCE** - Displays the reflectance value at each wavelength.
  - % STRENGTH** – Percentage of the ratio of the K/S of the sample to the K/S of the standard.
- Uncheck the **OPTIONS > SHOW BACKGROUND**, to display the plot with white background color.

- Check **OPTIONS > AUTO RANGE** to automatically scale the contents to fit. If **AUTO RANGE** is not selected, then enter the **Y-** and **X-axis** range to display.

## Views > Trend Plot

This tool can be used to study the trends in production and identify color variations. There are four parameters of color measurement (three scale values and optional indice) which can be represented in four traces. If a sample point is selected in one of the four traces, it is highlighted in the other 3 traces in blue. The name is shown at the bottom right hand corner of the View. The **AVERAGE** and **STANDARD DEVIATION** can be shown as per the view configuration settings.

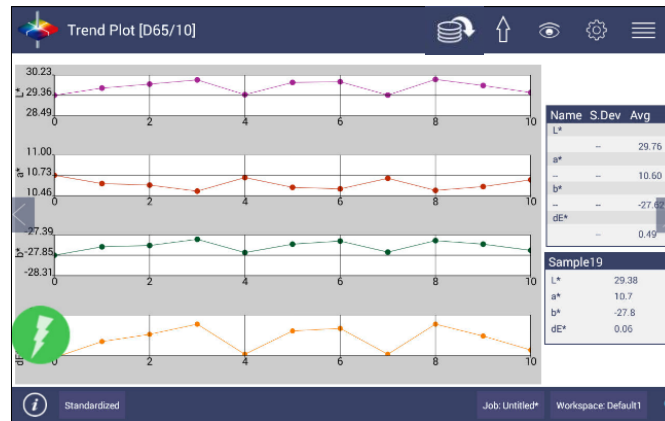


Figure 113. Trend Plot

- **VIEW OPTIONS** for the **TREND PLOT** includes the type of display, the statistics and the number of readings per display.

Figure 114 shows the View Options dialog box. It has two main sections: Display and Statistics. The Display section has checkboxes for Line and Point. The Statistics section has checkboxes for Average and Std. Deviation. Below these sections is a field for Measurements per Display, which is currently set to 10. At the bottom are OK and Close buttons.

Figure 114. Trend Plot Options

- **VIEW OPTIONS > TRACES** set the ranges for the traces or allow selection of **AUTO RANGE**. Trace 1 to 3 uses the current Color Measurement Scale and Trace 4 will allow for measurement of differences or an index. The user can select which Traces to view and set control limits as a percent.

The dialog box 'Trend Plot Traces' has the following sections:

- Trace Ranges:** A table with four rows and two columns of numerical values.
 

Trace1(L*) +/-	1.0	-1.0
Trace2(a*) +/-	1.0	-1.0
Trace3(b*) +/-	1.0	-1.0
Trace4(None) +/-	1.0	0.0
- Trace1..3:**
  - Illuminant/Observer: D65/10
  - Scale: CIELAB
- Trace4:**
  - ☒ Indices: None
  - ☐ Differences: None
- Visible Traces:**
  - ☒ Trace1
  - ☒ Trace2
  - ☒ Trace3
  - ☐ Trace4
- Control Limits (Percentage):**
  - Trace1: 0
  - Trace2: 0
  - Trace3: 0
  - Trace4: 0

Buttons: OK, Cancel

Figure 115. Trend Plot Traces

## Views > Color Plot

This shows the sample location in two-dimensional Color Space with respect to the standard for difference measurements or the samples in absolute measurement. For differences, the standard is the center point of the plot and the samples are plotted separately on the graph.

The displayed samples are shown in a list box on the right of the screen. The color plot can be zoomed, and the data points can be viewed in detail.

Press and hold on the left/right page number arrows to show a small dialog box. This dialog allows you to select the number of records per page to display and the default page number to display.

Figure 116. Color Plot View

The dialog box 'Color Plot Options' has the following settings:

- Illuminant/Observer: D65/10
- Scale: CIELAB
- Display Mode: Absolute
- ☒ Auto Range

Buttons: OK, Close

Below the dialog, a color plot is visible with a status bar showing 'Status Pass'.

Figure 117. Color Plot Options

The tolerance plot is available in rectangular and elliptical color space. The **PASS/FAIL** sample points are shown in green and red when in difference mode, respectively. In Absolute Mode, they are shown in green.







## Recall Standard

### Recall Icon



The Tool Bar offers a quick way to recall standards and samples using this icon.

Click **RECALL** option in Data Management, a dialog will be displayed where the user can recall the measurements from the database by **SELECTING THE TYPE**:

- Show The Standard Associated With A Specified **CATEGORY**.  
When this options is selected, the standards list is filled with the standards associated with the selected Category from the **SELECT STANDARD CATEGORY** list. All matching samples are filled into the sample list. To narrow the list, the user can select the samples only associated with the selected standard.
- Show All The Measurements In The Selected **JOB**  
When this option is selected, the standard and samples for that job are listed.
- Show The **STANDARDS/SAMPLES** In The **CURRENT WORKSPACE**  
When this option is selected, the list is filled with the standards and samples associated with the current workspace. To narrow the sample list, the user can select the samples only associated with the selected standard.
- Show The **IMPORTED STANDARDS**  
When this option is selected, the standards list is only filled with the standards imported into the database. After selecting the measurements click **RECALL** placing them into the active Job.

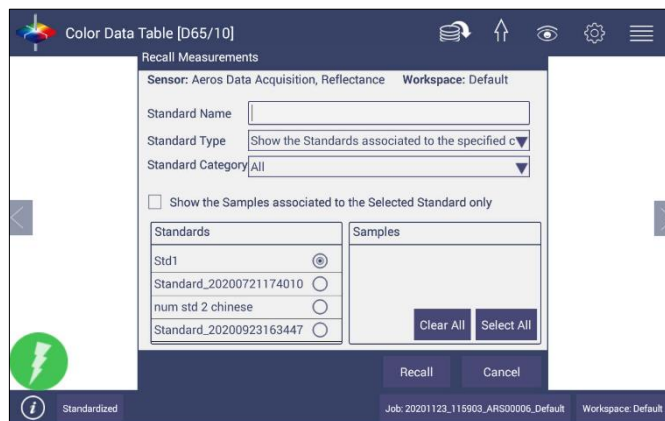
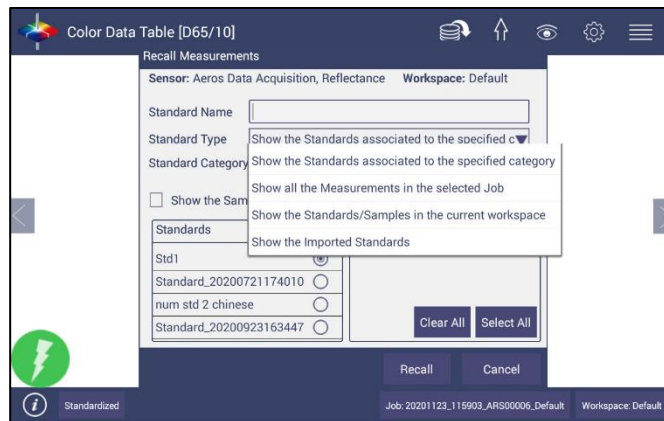


Figure 118. Recall Measurements

## User's Manual for Aeros and EasyMatch Essentials v 1.2



**Figure 119.** Select Standard by Type

Select the Type and then press Recall to continue.

## Special Functions

### *Auto-Exporting Data Through A Network Connection*

Connect Aeros to a Network. You can connect Aeros to a network hub using the Ethernet cable or connect Aeros to a network hotspot through a Wi-Fi connection. The computer must be connected to the same network as the Aeros.

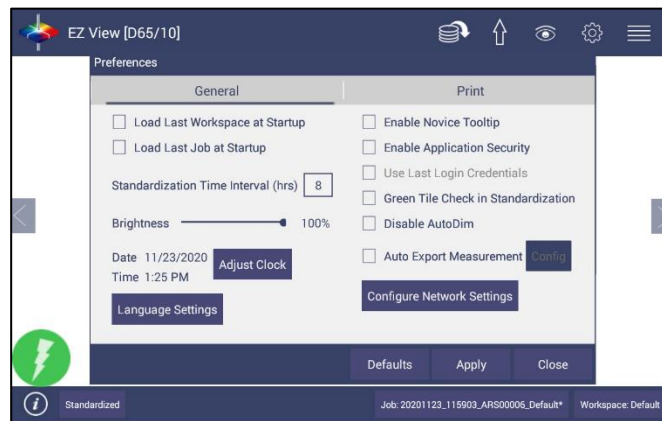
#### **OPTION A: CONNECT TO A NETWORK HUB USING AN ETHERNET**

- Hardware needed: Ethernet cable plugged into the back of the Aeros and the other end to a network hub.



*Figure 120. Ethernet Cable*

- To connect Aeros to network, go to **WORKSPACES > PREFERENCES** and Select **CONFIG NETWORK SETTINGS**.



*Figure 121. Preferences (General) > Network Settings*

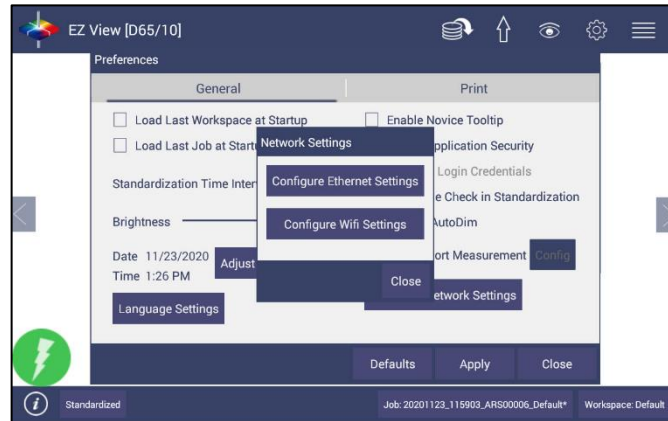


Figure 122. Configure Ethernet

- Select **CONFIGURE ETHERNET SETTINGS**.
- Check **USE DHCP FOR ETHERNET CONFIG**. Please write down the IP address showing in the Ethernet Setting dialog. You can also check the IP address of Aeros in **JOBS > ABOUT > INFO**.

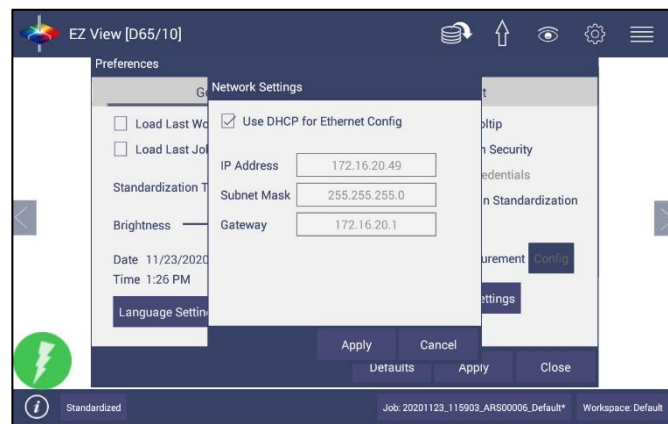


Figure 123. Select DHCP

- Go to **WORKSPACE > PREFERENCES** and select **AUTO NETWORK DATA EXPORT MEASUREMENT** using a check and select **CONFIG**. Choose **ACT AS SERVER** and **PORT** number as **11111**. You can also choose a delimiter to mark your data.

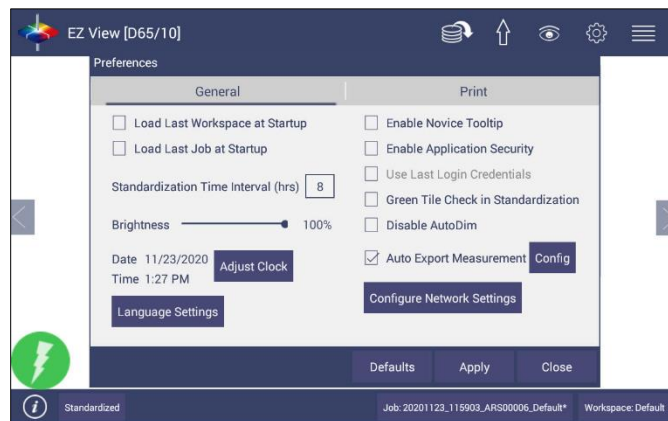


Figure 124. Auto Export Measurement

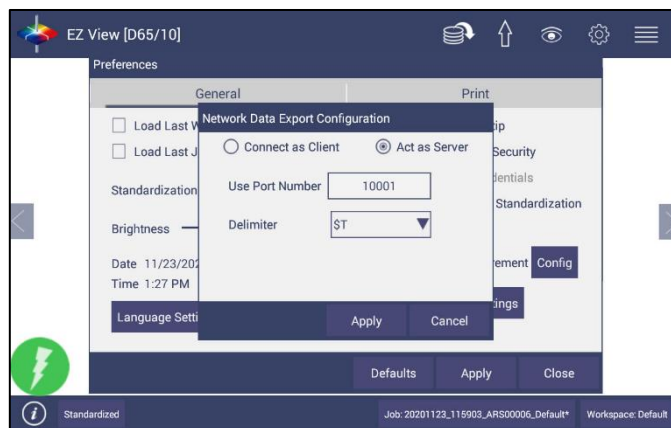


Figure 125. Network Data Export

- Configure the computer with the following settings:
  - ❖ Set computer as **CLIENT**.
  - ❖ Enter the **IP ADDRESS** of Aeros as recorded above.
  - ❖ Set the port number as **11111**.
- After all have been set, the data is ready to be exported from Aeros to the computer.

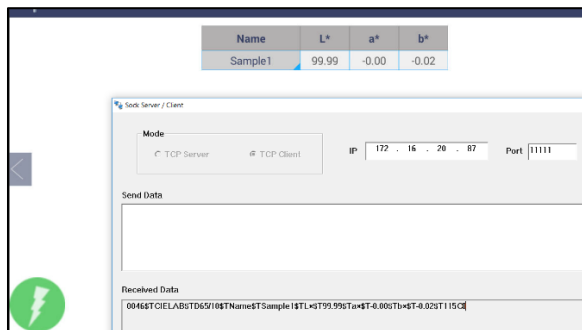


Figure 126. Data Export

#### OPTIONAL B: CONNECT TO A HOTSPOT THROUGH THE WIFI CONNECTION

- To connect Aeros to network, go to **WORKSPACES> PREFERENCES** and select **CONFIG NETWORK SETTINGS**.

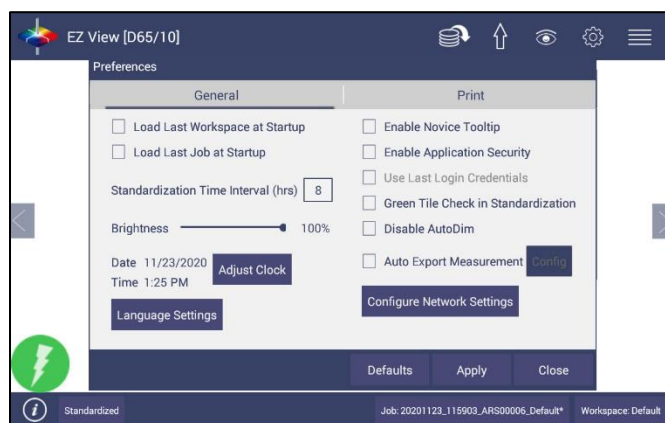


Figure 127. Configure Network Settings

- Select **CONFIGURE WIFI SETTINGS** and the Wi-Fi configuration dialog will be prompted.

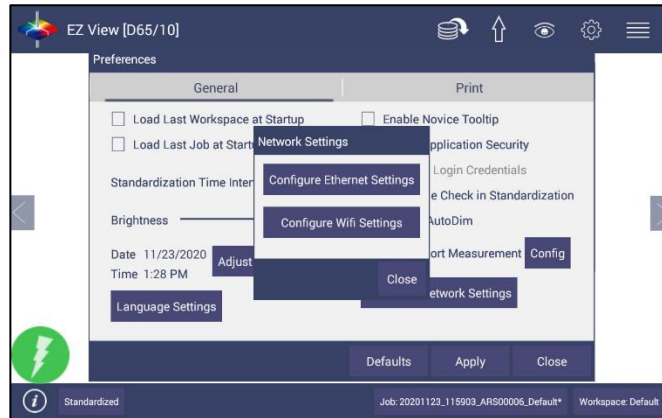


Figure 128. Configure WIFI settings

- Please search and connect to the available Wi-Fi and write down the IP address showing in this dialog. After the Wi-Fi configuration, please click the floating **BACK** Button to go back to Essentials app.

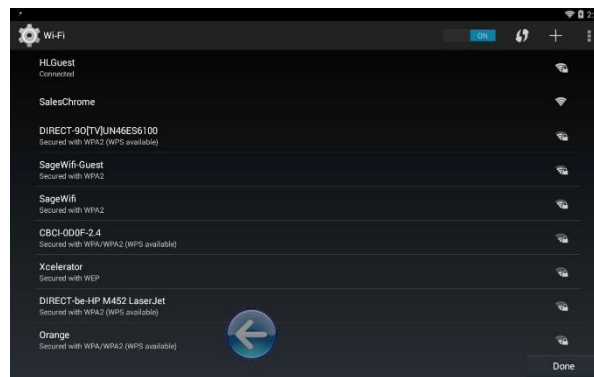


Figure 129. Find IP Address

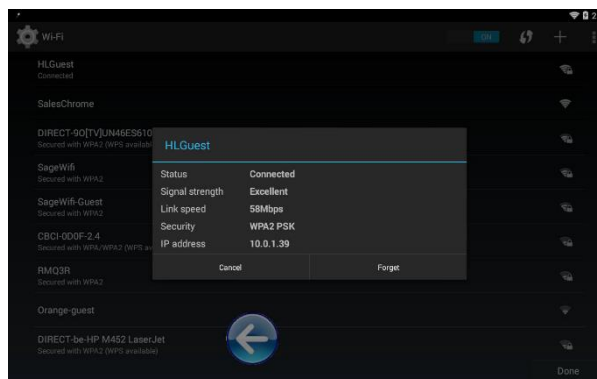


Figure 130. Find IP Address (Part2)

- Go back to **WORKSPACES > PREFERENCES > AUTO EXPORT MEASUREMENT** and check **CONFIG**. Choose **ACT AS SERVER** and **PORT NUMBER** as **11111**. You can also choose a delimiter to mark your data.

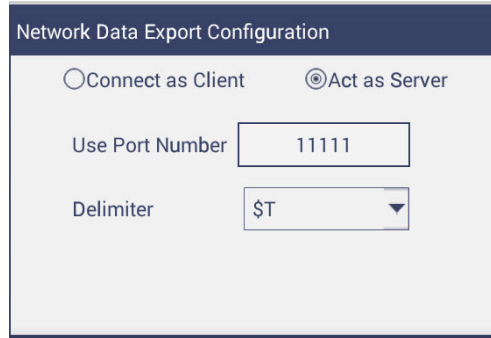


Figure 131. Network Data Export Config

- Configure the computer with the following settings:
  - ❖ Set computer as **CLIENT**.
  - ❖ Enter the **IP ADDRESS** of Aeros which is recorded in step 1 above.
  - ❖ Put the port number as **11111**.
- After all the setting, you should be ready to get the data exported from Aeros to the computer.

### ***Auto-Exporting Data Via Direct Connection Between Aeros And A Computer***

Ethernet cable is plugged into the back of the Aeros and the other end is connected to the computer. Ethernet adapter USB can be applied here if the computer does not have available Ethernet port.

- Materials Needed: Ethernet cable and Ethernet adapter to USB can be applied here if the computer does not have an available Ethernet port. Hardware needed: Ethernet cable and Ethernet adapter to USB can be applied here if the computer does not have available Ethernet port.



Figure 132. Ethernet Cable



Figure 133. Ethernet to USB Adapter

- Connect Aeros to Computer:
  - Plug Ethernet cable into RJ-45 Ethernet connection at rear of Aeros.



Ethernet Port

Figure 134. Rear View of Aeros

- Plug the other end into the Computer or into the Ethernet adapter
- Open Command Prompt in the PC.

Type in **IPCONFIG**, find the right ethernet (in this case, it is **Ethernet adapter Ethernet**) and write down **AUTOCONFIGURATION IPV4 ADDRESS** as well as the **SUBNET MASK**.

```
Command Prompt
C:\Users\ping.wang.HUNTERLAB>
C:\Users\ping.wang.HUNTERLAB>ipconfig
Windows IP Configuration

Ethernet adapter Ethernet 2:
    Connection-specific DNS Suffix  . : 
    Link-local IPv6 Address . . . . . : fe80::1420:851b:44d0:7190%29
    Autoconfiguration IPv4 Address. . : 162.254.113.144
    Subnet Mask . . . . . : 255.255.0.0
    Default Gateway . . . . . : 

Wireless LAN adapter Local Area Connection* 3:
    Media State . . . . . : Media disconnected
    Connection-specific DNS Suffix  . : 

Wireless LAN adapter Local Area Connection* 2:
    Media State . . . . . : Media disconnected
    Connection-specific DNS Suffix  . : 

Ethernet adapter Bluetooth Network Connection:
    Media State . . . . . : Media disconnected
    Connection-specific DNS Suffix  . : 

Wireless LAN adapter Wi-Fi:
    Media State . . . . . : Media disconnected
    Connection-specific DNS Suffix  . : 

Ethernet adapter Ethernet:
```

Figure 135. Command Prompt ipconfig

- Configure the Aeros
- Open Aeros Essentials, go to **WORKSPACES > PREFERENCES > CONFIGURE NETWORK SETTINGS**. First, select the Ethernet configuration. Uncheck **USE DHCP FOR ETHERNET CONFIG**. Type in **IP ADDRESS** and **SUBNET MASK** manually. The IP address here should be same as the autoconfiguration IPv4 Address in the PC, except changing the last number. The Subnet Mask is the exact same. Restart Aeros to get network setting applied.



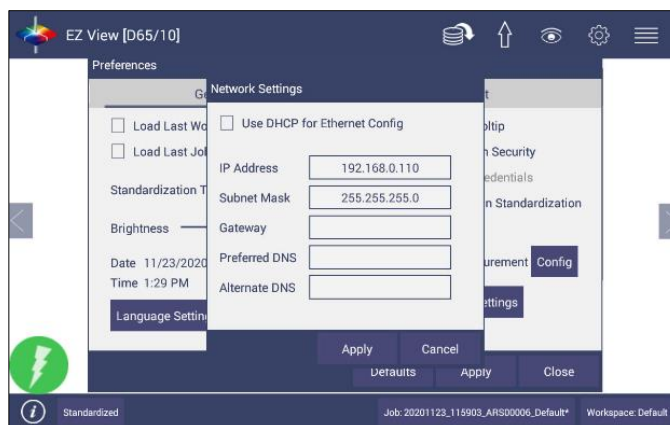


Figure 136. Configuration Parameters for Ethernet

- Press **APPLY** on the Ethernet Configuration and then **APPLY** on the Preferences Page to complete.
- Turn the instrument **OFF** and then back **ON**.
- Go to **PREFERENCES** and select **AUTO NETWORK DATA EXPORT**.

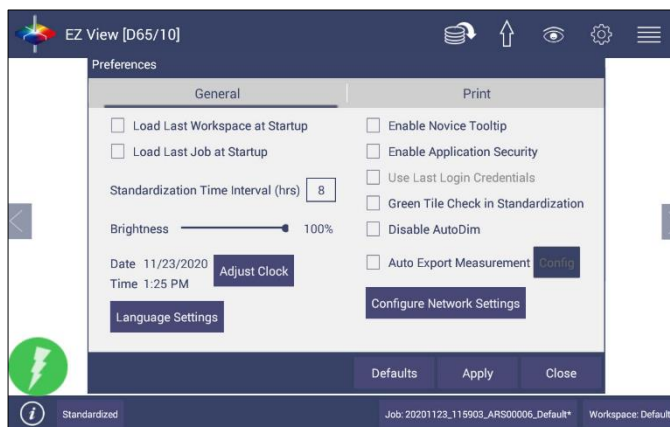


Figure 137. Read Options > Auto Export Measurements

- For a direct connection between Aeros and data collection computer, set up the Aeros as a **CLIENT**.
- Enter the **COMPUTER IP ADDRESS** here, in this case **169.254.113.144** and the **PORT** as **10001**. Press **APPLY** on the screen to continue.

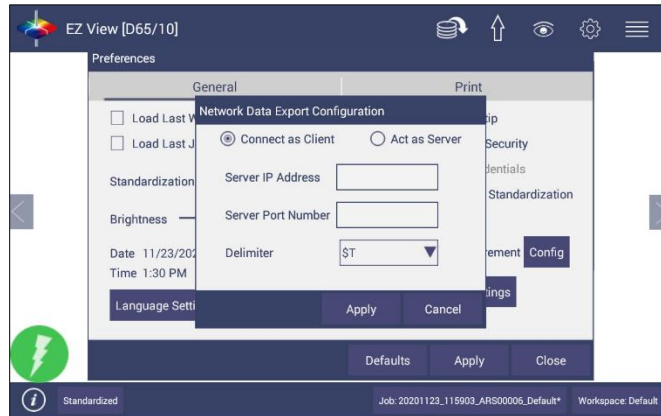


Figure 138. Read Options Export

- Aeros is now ready to send data.
- Configure the Computer:
  - Connection configurations differ depending on data collection software. The data collection computer will be set up as a Server.
  - Connect as follows:
    - ❖ Set computer as **SERVER**.
    - ❖ Enter the computer IP address **169.254.113.144**
    - ❖ Put the port number as **10001**

- Send Data from the Aeros:
  - Configure the **COLOR DATA TABLE** with the color scale and parameters to be measured.

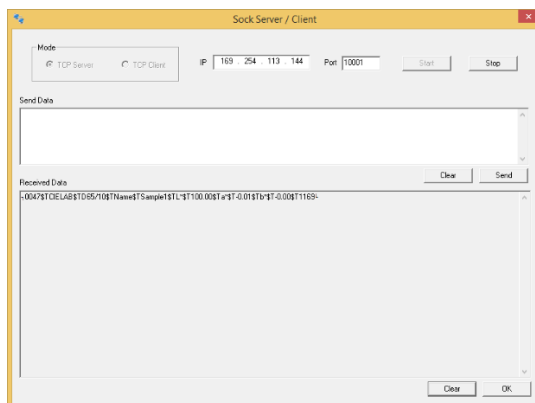


Figure 139. Data Output

### Tips & Tricks: Recover Unsaved Measurement Data

- In the case where the application is closed unexpectedly, the data is temporarily stored in a table along with the Job details. When the application restarts, a prompt allows the user to recover the data.

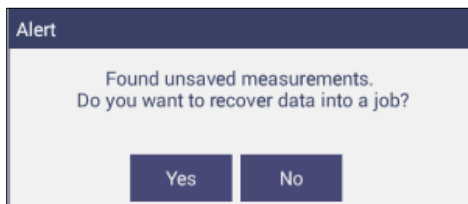


Figure 140. Recover Data

- If the user answers **YES**, all measurements are recovered into a new job or appended to a saved job.

### HunterLab File Service Package

The HunterLab File Service is a customized background service which provides the network storage facility for Essentials-AEROS to back-up a File or Folder to a networked PC. This package contains:

- HunterLab File Service Installer (FileServiceInstaller.exe)
- A package file **HLFSPACKAGE.PKG**.

#### TO INSTALL THE FILE SERVICE PACKAGE

- Copy the above installation package files into a networked PC.
- Run the executable **FILESERVICEINSTALLER.EXE** and follow the guided steps to complete the installation process.

- After installation a shortcut for **HUNTERLAB FILE SERVICE CONFIG TOOL** will be created on Desktop. Double click on the shortcut **HUNTERLAB FILE SERVICE CONFIG TOOL**.

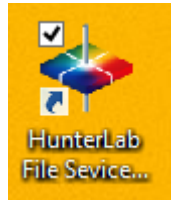


Figure 141. File Service Tool

- Select the **ROOT FOLDER** by clicking on the **BROWSE** button. The Essentials Backup will be stored in the configured Root Folder path. Enter the **PORT NUMBER** for the network File service. Click on the **APPLY** button. The File service will be restarted with the new settings.

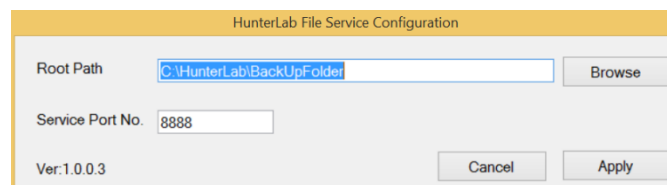


Figure 142. Select Root Folder

**Note: Make sure that the configured port number is added to Exceptions in the firewall. The configured port number in the server must be same at the client side (Essentials-AEROS).**

### SETTING UP FILE STORAGE FROM AEROS (CLIENT) SIDE

In Aeros Essentials, navigate to **JOBS > DATA MANAGEMENT > BACKUP (or RESTORE)**. The **SELECT ACTION** dialog will be displayed. The user can choose between **USB DRIVE** or **NETWORK STORAGE**. When **USB DRIVE** option is selected, the Backup and Restore operations will be performed into the USB flash drive plugged into the system.

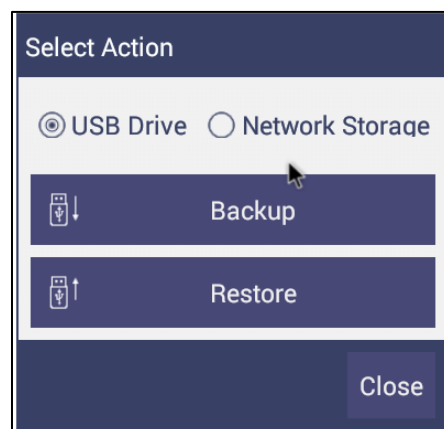


Figure 143. Select USB Option

When **NETWORK STORAGE** is selected, the Backup and Restore operations are performed into a network folder of the specified system where the HunterLab File Service is installed. Click on **NETWORK STORAGE SETTINGS** Button

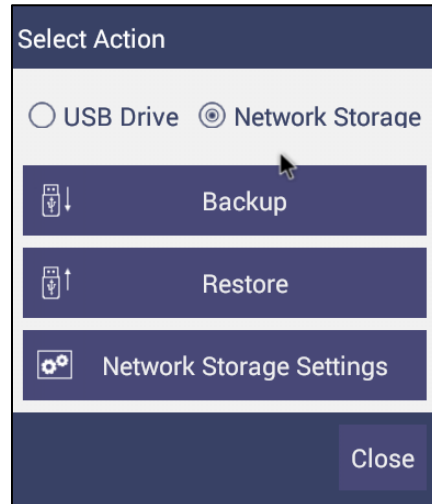


Figure 144. Network Storage Settings

In the next screen enter the **IP ADDRESS** and **PORT NUMBER**. Click on **TEST CONNECTION** button to verify the connectivity. Click **APPLY** to save the settings. The saved network settings will be used for the Network Backup and Restore operations.

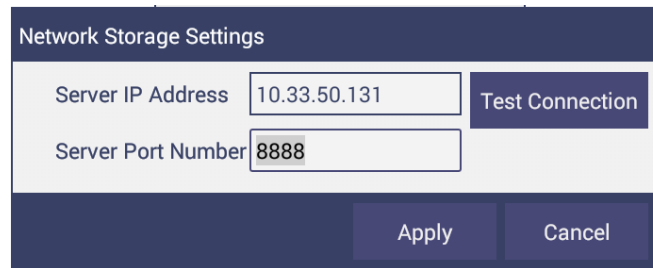


Figure 145. Network Storage Settings

After successful configuration of network settings, click **BACKUP** (or **RESTORE**) to perform the complete backup of **HUNTERLAB** folder in Essentials-Aeros to the specified network server's folder.

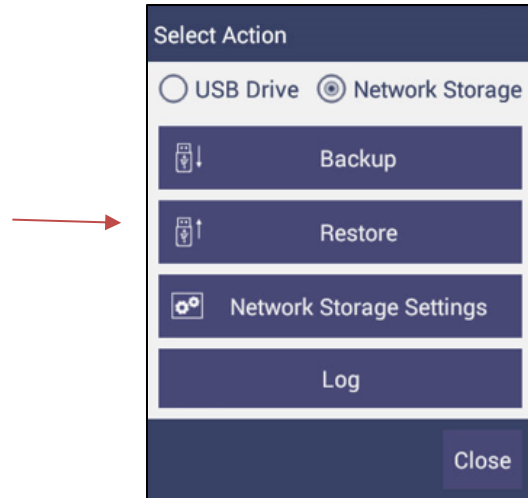


Figure 146. Select Restore

Select the files to be restored.

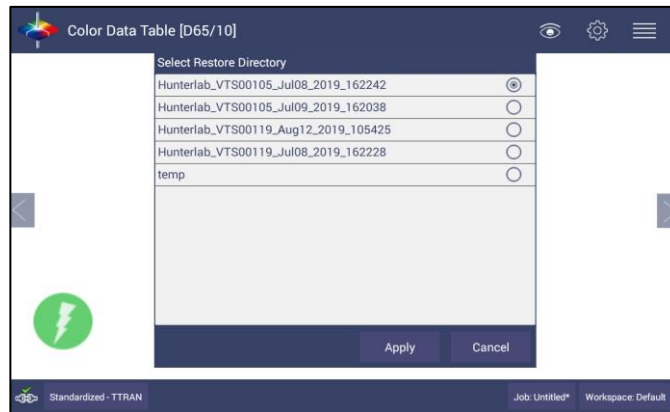


Figure 147. Select Files to be Restored.

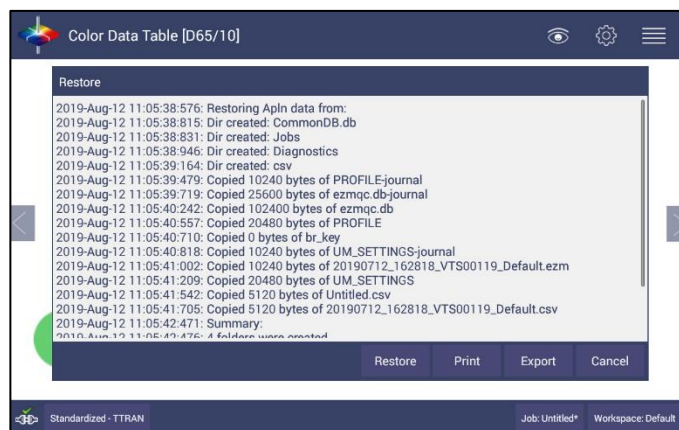


Figure 148. Files Restored







## Specifications

The specifications and characteristics of the instrument are given in this chapter. For best performance, the instrument should be placed where there is ample workspace with medium or subdued illumination and no drafts. The operating conditions (temperature and humidity ranges) are given in the Operating Conditions section below.

**Note:** Do not leave Aeros in an area where temperature or humidity extremes are possible.

### Operating Conditions

Storage Temperature (3weeks)	-21°C to 66°C (-5°F to 150°F)
Operating Temperature	0°C to 50°C (32°F to 122°F)
Noncondensing Humidity	10% to 90%
Standard Accessories	Calibrated instrument White Tile, Certificate of Traceability, Black Glass Standard, Green Diagnostic Tile, Standards Box, 30.5 cm (12-in) and 15.2 cm (6 in) sample pans, Power Supply, Quick Start Guide, Aeros User's Guide on CD

### Physical Characteristics

Weight	23.0 kg (50.0 lbs.)
Dimensions (Height x width x depth)	56 cm x 38 cm x 51 cm (22.0 in x 15 in x 20 in)
Maximum Sample Height	65 – 140 mm (2.5 – 5.5 in)
Communications I/O: USB Front & Rear Panel  Ethernet RJ45  Remote Access Support	Connectivity to printer, keyboard, mouse and other peripherals.  Print directly to standalone or network printers; email directly from the instrument; stream data to LIMS and SPC systems.  Enabled

System Power	100 – 240 VAC, 47 – 63 Hz to universal power supply @ 24 VDC/3.75A
--------------	--

### ***Conditions Of Illumination And Viewing***

Light Source	Full spectrum balanced LED system array
Dual Beam Spectrophotometer	256 element diode array and high resolution, concave holographic grating
Measurement Principle	Dual-beam Non-Contact Reflectance Spectrophotometer
Measurement Method	Rotating platter @ 12 RPM
Area Measured per Rotation	177.25 cm <sup>2</sup> (27.5 in <sup>2</sup> )

### ***Instrument Performance***

Spectral Data	Range: 400-700 nm Reporting Interval (nm): 10 nm
Spectral Resolution	<3 nm
Reporting Interval	10 nm
Sampling Rate	Continuous at 7 measurements per second
Photometric Range	0-150%
Measurement Duration	5 seconds (1 rotation)
Measurements per Rotation	35
Inter-instrument Agreement on BCRA II Tile Set	$\Delta E^*L^*a^*b^* < 0.30$ (Avg) $\Delta E^* (L^*a^*b^*) < 0.50$ (Max) on
Colorimetric Repeatability	$\Delta E^* < 0.025$ Max on White Tile

## Measurement

Data Views	Color Data, Spectral Data, Spectral Plot, EZ View, Tristimulus Color Plot, Trend Plot
Illuminants	A, C, D50, D55, D65, D75, F02, F07, F11, TL84, ULT30, ULT35
Observers	2° and 10°
Color Scales	CIE L*a*b*, Hunter Lab, CIE L*C*h, CIE Yxy, CIE XYZ and differences
Color Difference Indices	$\Delta E^*$ , $\Delta E$ , $\Delta E$ CMC, $\Delta E$ 2000
Indices and Metrics	E313 Yellowness, E313 Whiteness, YI D1925, Y Brightness, Z%, 457nm Brightness, Baking Contrast Units, Tint, HCCI, SCAA
Data Storage	500,000 Records max

## Regulatory Notice



**HunterLab**  
ISO 9001 Certified

### *Declaration of Conformity*

EU / EMC Directive: **2014/30/EU**

Standard to which Conformity is Declared: **IEC 61326-1: 2012 / EN: 2013**

Manufacturer: **Hunter Associates Laboratory, Inc.  
11491 Sunset Hills Rd, Reston, VA, USA**

European Representative:  
Representative's Address: **Christian Jansen  
Griesbraeustrasse 11, 82418 Murnau, Germany**

Type of Equipment: **Reflectance Spectrophotometer**

Model No.: **Aeros**

*I, the undersigned, hereby declare that the equipment specified above  
conforms to the Directive(s) and Standard(s) above*

Place: Reston, VA, USA

Signature 

Date: December 14, 2017

Full Name Tim Barrett

Position Systems Engineer

## Features, Accessories & Maintenance

### *Aeros Maintenance & Safety*

The Aeros is engineered to be virtually maintenance free. This section outlines the few parts of the sensor that are to be maintained for the instrument to function properly.

#### **CLEANING THE AEROS**

The Aeros is NOT waterproof, but the exterior of the case may be wiped with a damp cloth.

#### **CLEANING THE WHITE TILE**

The White Standard is an optical coating and should be handled in much the same way as other optical surfaces. Although the material is very durable, care should be taken to prevent contaminants such as finger oils from contacting the material's surface. If the surface appears lightly soiled, it may be air brushed with a jet of clean dry air. For heavier soil, the material can be cleaned by scrubbing with a soft brush under running water. Blow dry with clean air or allow the material to air dry. If the material is heavily stained, soak with either an extremely mild mix of soap and water, 5% white distilled vinegar, or hydrogen peroxide. Then run under water while scrubbing with a soft brush. Always keep tiles in the Standards box when not in use

#### **CLEANING THE BLACK GLASS AND GREEN TILE**

The **Green tile and Black Glass** can be cleaned using a soft nylon-bristle brush, warm water, and laboratory grade detergent such as SPARKLEEN. Wipe the tiles dry using a clean, non-optically brightened, lint free paper towel, or use warm water as a rinse and let stand to air-dry in a couple of minutes.

Note: SPARKLEEN is manufactured by Fisher Scientific Co., Pittsburgh, PA 15219, and may be ordered from them using catalog number 4-320-4. Add one tablespoon of SPARKLEEN to a gallon of water.

The above procedure is particularly useful if the lab area is not clean. If, however, the lab is clean, an equally effective method for occasional tile cleaning is to use IPQ (isopropyl alcohol) sprayed onto a clean, non-optically brightened, lint free paper towel such as a Kim wipe. Wipe tile thoroughly watching for fingerprints and let air dry.

Keep the **Black Glass** in the standards case when not in use to prevent it from becoming scratched or collecting dust. Before standardizing the instrument, check the black tile for scratches and dust. Significant scratches that result in a hazy appearance to the finish may cause standardization to be in error. If the black tile is scratched, call the HunterLab Order Processing Department or contact your local HunterLab representative to order a replacement.

#### **POWER REQUIRED**

- Voltage: 100-240 VAC, 3.75A, 47/63 Hz
- Single Phase
- 60 VA maximum
- Installation Category (Over Voltage): II

***SAFETY***

- Do not view the instrument LED's directly as it may be damaging to the eyes.
- Do not submerge the instrument in water.
- Do not take the instrument apart as there are 'no user serviceable parts' in the instrument.
- Do not disassemble the instrument and attempt to clean the optical components.
- Do not open the instrument or remove any covers except using the instructions given in this User's Manual or under the direction of HunterLab Technical Support.

## When You Need Assistance

If you need for technical or sales assistance on applications, troubleshooting, , service, warranty, accessory pricing and more, please contact the office nearest you:

- For the Americas, [Support@hunterlab.com](mailto:Support@hunterlab.com)
- For Asia, [AsiaSupport@hunterlab.com](mailto:AsiaSupport@hunterlab.com)
- For Europe, [EuropeSupport@hunterlab.com](mailto:EuropeSupport@hunterlab.com)
- For India, Middle East and Africa, [IMEASupport@hunterlab.com](mailto:IMEASupport@hunterlab.com)
- For all other regions, [Support@hunterlab.com](mailto:Support@hunterlab.com)

Additionally, our global support website offers 24/7 assistance with a library of information on various color measurement and appearance topics such as applications, instrument operation, and troubleshooting. The HunterLab global support website is located at [support.hunterlab.com](http://support.hunterlab.com).

For personalized assistance, go to [support.hunterlab.com](http://support.hunterlab.com) and locate the [Create A Ticket](#) button on the menu. A subsequent form gathers information on your request for response from our Customer Experience Teams around the globe.





## Index

Auto Save Job, 38  
Average, 37  
Backup/Restore, 29  
Color Data screen, 15  
Color Data Table, 11, 36, 46, 64, 65  
Color Plot View, 70  
Color Scale, 15, 65  
Color Scales, 33  
Continuous Read, 38  
Data Management, 24  
Delete, 29  
Diagnostics, 49  
Email, 28  
Ethernet Port, 8  
Export, 27  
EZ View, 36, 43, 64  
Import, 25  
Index Bias Correction, 38  
Instrument Power, 8  
Jobs, 19, 21  
Keyboard & Mouse, 8  
Mail Settings, 28  
New Workspace, 47  
Operating Conditions, 89  
Read Options, 37  
Recall, 25  
Sample Name, 39  
Sensor Status, 18  
Spectral Data Table, 67  
Spectral Plot View, 68  
Standard and Tolerances, 42  
Standardization, 11  
Standardize, 47  
Standards & Tolerances, 15  
Taking a Measurement, 11  
Tolerances, 65  
Tools, 47  
Trend Plot, 36, 69  
USB Connectors, 8  
User Manager, 60  
View Flippers, 17, 46, 64  
View Options, 19, 64, 65, 69  
Views, 46  
Workspace, 11, 15, 18, 33



## Table of Figures

Figure 1. Calibration Box.....	7
Figure 2. Rear View with Connectors .....	7
Figure 3. USB Port on Rear of Instrument.....	8
Figure 4. Measurement Screen .....	11
Figure 5. Sensor Moves to Top.....	12
Figure 6. Read the Black Glass for Bottom-of-Scale .....	12
Figure 7. Read the White Tile for Top-of-Scale. ....	12
Figure 8. Completed Standardization .....	13
Figure 9. Standardization Status Bar .....	13
Figure 10. New Workspace .....	13
Figure 11. Read Options: Measurement Configuration .....	14
Figure 12. Changing, Renaming or Deleting a Sample .....	15
Figure 13. Edit/Delete a Standard .....	16
Figure 14. User Interface Screen for Aeros & Essentials.....	17
Figure 15. Sensor Serial Number .....	18
Figure 16. Job Menu .....	21
Figure 17. Open A Job.....	22
Figure 18. Save A Job.....	22
Figure 19. Workspace & System Settings > Preferences > Print .....	22
Figure 20. Save as PDF. ....	23
Figure 21. Save PDF to Downloads File .....	23
Figure 22. Download File Contents.....	24
Figure 23. Data Management Menu .....	24
Figure 24. Recall Measurements .....	25
Figure 25. Import Job.....	26
Figure 26. Import Workspace.....	26
Figure 27. Export Current Job .....	27
Figure 28. Export Standard .....	27
Figure 29. Select Download Folder for PDF File Export .....	28
Figure 30. Enter an Address to Email a Job.....	28
Figure 31. Enter SMTP Mail Server Information.....	29
Figure 32. Job > About the Software .....	29
Figure 33. USB port on instrument.....	30
Figure 34. Instrument .....	31
Figure 35. Workspace Parameters .....	33
Figure 36. Color Measurement Scales .....	33
Figure 37. Illuminant/Observer Configuration .....	34
Figure 38. Index Configuration.....	34
Figure 39. Custom Indices.....	34
Figure 40. Color Measurement Differences .....	35
Figure 41. Read Options .....	37
Figure 42. Reading and Averaging .....	37
Figure 43. Continuous Read .....	38
Figure 44. Auto Save Job.....	38
Figure 45. Slope & Bias Correction .....	39
Figure 46. Input Gain & Bias.....	39
Figure 47. Prompt for Sample (Standard) Name .....	40
Figure 48. Input Sample Name.....	40
Figure 49. Measurement Configuration .....	40

## User's Manual for Aeros and EasyMatch Essentials v 1.2

Figure 50. Creating a Sample Profile .....	41
Figure 51. Place sample on Turntable .....	41
Figure 52. Sample Profile Complete .....	41
Figure 53. Tolerances Configuration.....	42
Figure 54. Enter Tolerances .....	42
Figure 55. Index Selection and Tolerances.....	43
Figure 56. Indices & Tolerances on CDT.....	43
Figure 57. Hitch Standardization .....	44
Figure 58. AutoTolerance Configuration.....	45
Figure 59. Difference Tolerance Configuration .....	45
Figure 60. Indices Tolerance Configuration .....	46
Figure 61. Workspace Views .....	46
Figure 62. New Workspace .....	47
Figure 63. Name the New Workspace .....	47
Figure 64. Begin Standardization.....	47
Figure 65. Attach Standardization Box with Black Glass .....	48
Figure 66. Change to White Tile .....	48
Figure 67. Green Tile Reading .....	48
Figure 68. Standardization is Complete.....	49
Figure 69. Performance Diagnostics Menu.....	49
Figure 70. Set up for Colorimetric Repeatability.....	50
Figure 71. Standardize the Instrument.....	50
Figure 72. Read White Tile .....	50
Figure 73. Begin Repeatability Readings on White Tile .....	51
Figure 74. Repeatability Readings with Pass/Fail .....	51
Figure 75. Diagnostics Repeatability Test Results .....	51
Figure 76. Input Target Values for Green Tile .....	52
Figure 77. Attach the Green Tile .....	52
Figure 78. Green Tile Readings.....	52
Figure 79. Advanced Menu .....	53
Figure 80. Insert USB with Printer Driver.....	54
Figure 81. Select Printer Driver .....	54
Figure 82. Updating Printer Drivers.....	55
Figure 83. Printer Driver Installed .....	55
Figure 84. Printer Page .....	56
Figure 85. Select Region .....	56
Figure 86. Remote Access Screen.....	57
Figure 87. WebConnect to HunterLab.....	57
Figure 88. System Settings> Preferences> General Page.....	58
Figure 89. Language & Keyboard Selection.....	58
Figure 90. Enable Novice Tool Tips.....	59
Figure 91. Example of Novice Tool Tip.....	59
Figure 92. Network Settings.....	60
Figure 93. System Settings> Preferences> Configure Print Page.....	60
Figure 94. Create a Group.....	61
Figure 95. Setup Administrative & General Users .....	61
Figure 96. User Privileges.....	61
Figure 97. Enabling Security.....	62
Figure 98. Login Credentials.....	62
Figure 99. Enable Last Login Credentials .....	62
Figure 100. Log Off .....	63
Figure 101. Workspace > select Views.....	64
Figure 102. EZ View Display .....	64

## User's Manual for Aeros and EasyMatch Essentials v 1.2

Figure 103. EZ View Options .....	65
Figure 104. Color Data Display .....	65
Figure 105. Color Data Screen: View Options Needs new screen. ....	66
Figure 106. Changing a Sample into a Standard.....	66
Figure 107. Delete the Sample Measurement .....	66
Figure 108. Edit Standard Name or Delete the Standard.....	67
Figure 109. Spectral Data Table .....	67
Figure 110. Spectral Data Table Options .....	67
Figure 111. Spectral Plot View .....	68
Figure 112. Spectral Plot Options.....	68
Figure 113. Trend Plot .....	69
Figure 114. Trend Plot Options .....	69
Figure 115. Trend Plot Traces .....	70
Figure 116. Color Plot View.....	70
Figure 117. Color Plot Options .....	70
Figure 118. Recall Measurements .....	73
Figure 119. Select Standard by Type .....	74
Figure 136. Ethernet Cable .....	75
Figure 137. Preferences (General) > Network Settings.....	75
Figure 138. Configure Ethernet.....	76
Figure 139. Select DHCP .....	76
Figure 140. Auto Export Measurement .....	76
Figure 141. Network Data Export.....	77
Figure 142. Data Export .....	77
Figure 143. Configure Network Settings.....	77
Figure 144. Configure WIFI settings .....	78
Figure 145. Find IP Address.....	78
Figure 146. Find IP Address (Part2) .....	78
Figure 147. Network Data Export Config .....	79
Figure 148. Ethernet Cable .....	79
Figure 149. Ethernet to USB Adapter .....	79
Figure 150. Rear View of Aeros.....	80
Figure 151. Command Prompt ipconfig.....	80
Figure 152. Configuration Parameters for Ethernet.....	81
Figure 153. Read Options > Auto Export Measurements .....	81
Figure 154. Read Options Export.....	82
Figure 155. Data Output .....	83
Figure 156. Recover Data.....	83
Figure 157. File Service Tool .....	84
Figure 158. Select Root Folder .....	84
Figure 159. Select USB Option .....	84
Figure 160. Network Storage Settings .....	85
Figure 161. Network Storage Settings .....	85
Figure 162. Select Restore .....	86
Figure 163. Select Files to be Restored.....	86
Figure 164. Files Restored.....	86